



# Introducing a New Proposed Partnership: *Carolina Charter School Research Lab*

Jeni Corn, Ph.D., Research Director – Social Sciences,  
NC Collaboratory

Doug Lauen, Ph.D., Department of Public Policy,  
UNCCH



The University  
of North Carolina  
at Chapel Hill

# ABOUT US

Established in 2016 by the North Carolina General Assembly, the Collaboratory supports cross-sector research partnerships that seek to transform academic research into evidence-based solutions for environmental, health, and societal challenges faced by people in North Carolina.

**Codified as Article 31A of NCGS 116-255 and -256**

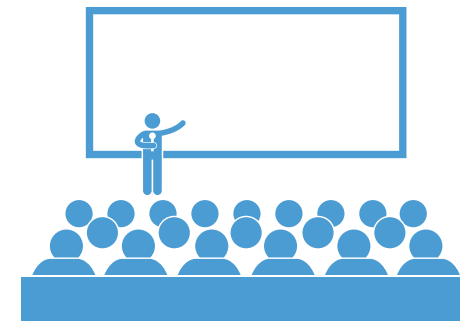


# SOCIAL SCIENCE PORTFOLIO

Child Welfare, Criminal Justice, Economic  
Development, Education, Opioid Abatement,  
Public Safety, State & Local Government,  
Workforce



# OUR APPROACH FOR FUNDING AND SUPPORTING SOCIAL SCIENCE RESEARCH



## Engage

Engage critical subject-area stakeholders to identify the most pressing policy priorities in social science areas in NC.

## Study

Administer grants for research projects on the most pressing policy priorities in social science areas in NC.

## Build a Network

Build a network of NC-based researchers, practitioners, and policymakers with expertise in social science areas in the State policy ecosystem.

## Share Results

Share relevant and timely results from funded studies with state and local policymakers.

## Maintain Trust

Maintain relationships with key social science research stakeholders across academic, government, community, nonprofit, and for-profit sectors.

# OFFICE OF LEARNING RESEARCH (OLR) ESTABLISHED IN STATUTE

December 11, 2024

SL 2024-57, Section 2A.8.(a-e)

The purpose of OLR is to *identify and evaluate the efficacy and efficiency of programs, activities, initiatives, procedures, and any other factors related to elementary and secondary education in the State.*



# OLR ACTIVE PROJECTS

**7 institutions**  
**\$1.45 million**



The University  
of North Carolina  
at Chapel Hill

Duke **APPSTATE**



**NC Central**  
UNIVERSITY

**NC STATE UNIVERSITY**



Western  
Carolina  
UNIVERSITY

**collaboratory**  
science. policy. solutions.

- Implementation and Impact of School Extension Programs in the Helene Recovery Process
- Principal Working Conditions Survey
- Smartphone Interactions and Learning Experiences
- Accountability for Opportunity Scholarships
- Economic Evaluation of a Student Mental Health Program
- Teacher Retention in Rockingham County
- Teacher Retention Learning Agenda
- NC School Level Typology Development
- School Construction Databook
- NC Learning Research Network
- Schools for the Deaf and Blind (Four Projects)
- Landscape Analysis of AI Use in NC Schools

# CURRENT K12 POLICY PRIORITIES

- Accountability for Opportunity Scholarships
- AI Use in Schools
- Cell Phone Use in Schools
- Charter School Policies and Practices
- Chronic Absenteeism
- Early Literacy
- Educator Recruitment and Retention
- Effective Math Instruction
- Family Engagement
- Helene Recovery
- Innovative Models for High School
- Principal Working Conditions
- School Funding Models
- School Safety
- Schools for the Deaf and Blind
- Student Mental Health



# The Carolina Charter School Research Lab (CCSRL)

*A proposed* research-practice partnership between the Office of Charter Schools/CSRB and research team from UNC-CH Public Policy

- **Focus:** Research to inform charter school policies and practices in NC
- **Engagement:** Opportunity for input and adjustment throughout the life of the research study
- **Funding Partner:** NC Collaboratory
- **Timeline:** August 2026 - July 2030

# High-Level Research Questions

1. What explains variation in effectiveness across charter schools?
2. What kinds of students enroll, persist, and complete their course of study in the same charter school?
3. What kinds of practices and support services promote student success?

# Example Research Questions about Effectiveness

- How long does it take for charters to become reliably effective?
- What is the best scale for charter effectiveness? Are large/small charters more/less effective?
- Do teacher licensure and other qualifications relate to charter effectiveness?
- What practices are the most and least effective charters using?

# Example Research Questions about Enrollment

What types of students are less likely to enroll, persist, and complete in the same charter?

- Students with disabilities
- Those with higher quality local schools
- Low-income students
- Older students

# Example Research Questions about Support Services

Do charters with transportation or nutrition programs have:

- More economic diversity?
- Better performance?
- Higher family satisfaction?
- Lower mobility?

# Example Research Question about Charter Renewal

- Is the renewal “academic comparability” benchmark ( $\pm 5\%$  of district proficiency) stable and valid across different charter and district contexts?

# Questions?

Jeni Corn, Ph.D., Research  
Director – Social Sciences, NC  
Collaboratory

[Jeni\\_corn@unc.edu](mailto:Jeni_corn@unc.edu)

Doug Lauen, Ph.D.,  
Department of Public Policy,

[dlauen@unc.edu](mailto:dlauen@unc.edu)

