

TMSA Virtual

RCA Amendment Interview

March 9, 2026



TMSA

PUBLIC CHARTER SCHOOLS

Science Wisdom Peace



TMSA APEX



TMSA CHARLOTTE



TMSA TRIAD



TMSA TRIANGLE



TMSA Virtual



Opening Statement: A Virtual School with a Face-to-Face Feel



Demand for TMSA Virtual

- 75,000+ students on charter waitlists
- 5,000+ families waitlisted for TMSA schools
- Students from 60+ counties already travel to TMSA
- Strong need from:
 - Medically fragile students
 - Rural families
 - Accelerated learners
 - Students needing flexible pathways



TMSA APEX



TMSA CHARLOTTE



TMSA TRIAD



TMSA TRIANGLE



TMSA Virtual

TMSA Virtual Educational Model



Rigorous College Prep Curriculum

AP, Honors, and Dual Enrollment courses.
More personalized college counseling.
Preparing students for college academically and personally.

Success Coaching

Every student gets a success coach to support their academic and personal growth.

Synchronous and Asynchronous, Live and Self-paced Courses

Core, challenging courses taught live
Select self-paced courses with teacher support



Flexibility with High Expectations

Providing students with more flexibility and personalization while maintaining TMSA's high expectation culture.
Empowering students through programs like Leader in Me.

Parent Partnership

Frequent communication and engagement with parents regarding students' academic and personal growth.

Personalized Academic Support

On-demand, live homework beyond school hours.
Identification of learning gaps and providing personalized academic support by utilizing AI tools and data analysis.

Enrollment & Staff Projections



	Year 1	Year 2	Year 3	Year 4	Year 5
Student Enrollment	170	250	250	250	250
Admin & Support Staff	4	5	5	5	5
Instructional Personnel	8	14	15	15	15
TOTAL STAFF	12	19	20	20	20

Grade Span

8-10

7-11

7-12

7-12

7-12

Five Year Financial Projections



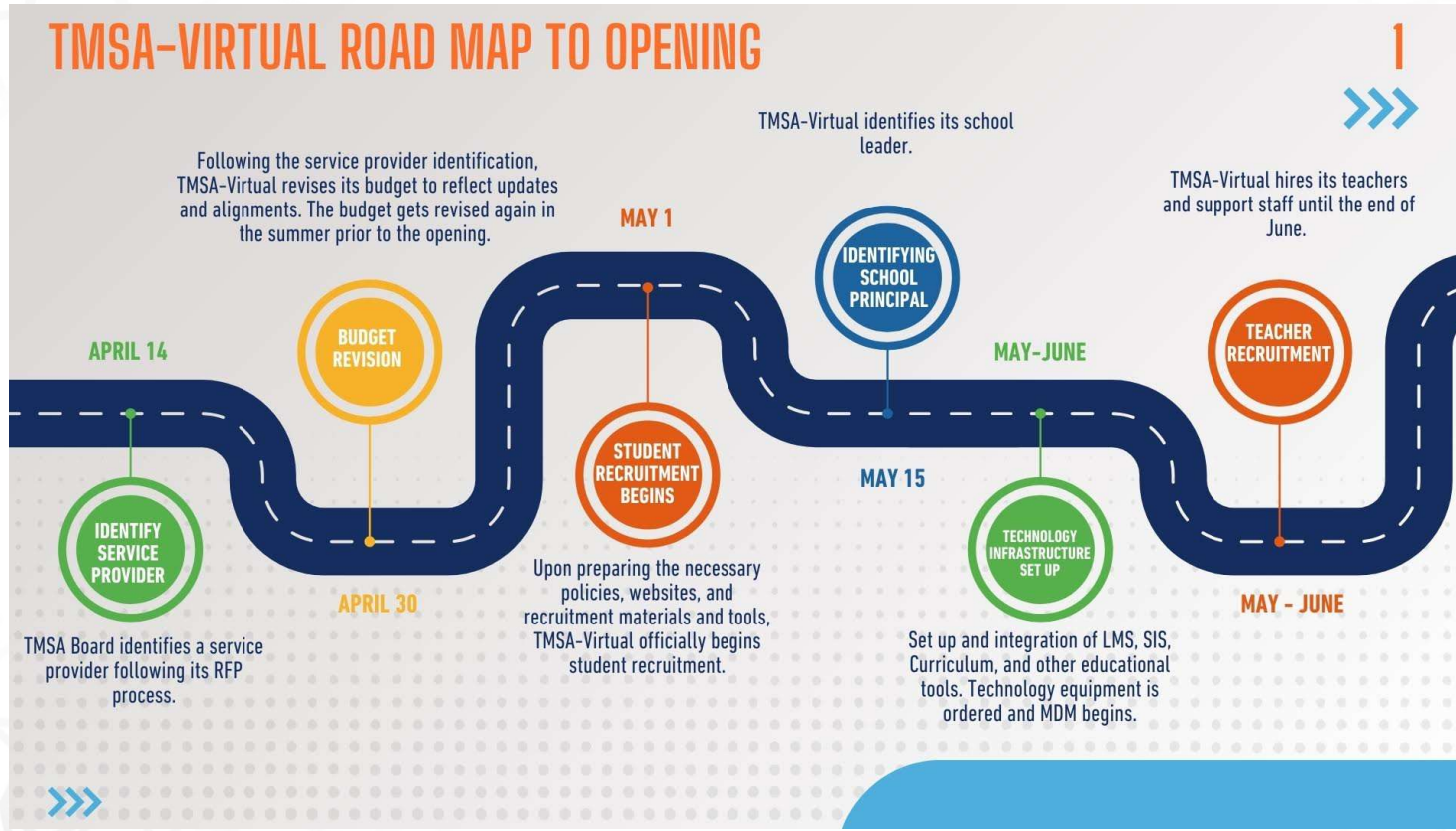
Overall Budget

SUMMARY	Year 1	Year 2	Year 3	Year 4	Year 5
Total Personnel	\$ 951,800.00	\$ 1,598,300.00	\$ 1,676,000.00	\$ 1,702,000.00	\$ 1,711,000.00
Total Operations	\$ 542,508.00	\$ 659,468.00	\$ 593,195.00	\$ 568,195.00	\$ 563,195.00
Total Expenditures	\$ 1,494,308.00	\$ 2,257,768.00	\$ 2,269,195.00	\$ 2,270,195.00	\$ 2,274,195.00
Total Revenue	\$ 1,590,160.82	\$ 2,369,364.54	\$ 2,383,902.30	\$ 2,383,902.30	\$ 2,383,902.30
Surplus / (Deficit)	\$ 95,852.82	\$ 111,596.54	\$ 114,707.30	\$ 113,707.30	\$ 109,707.30

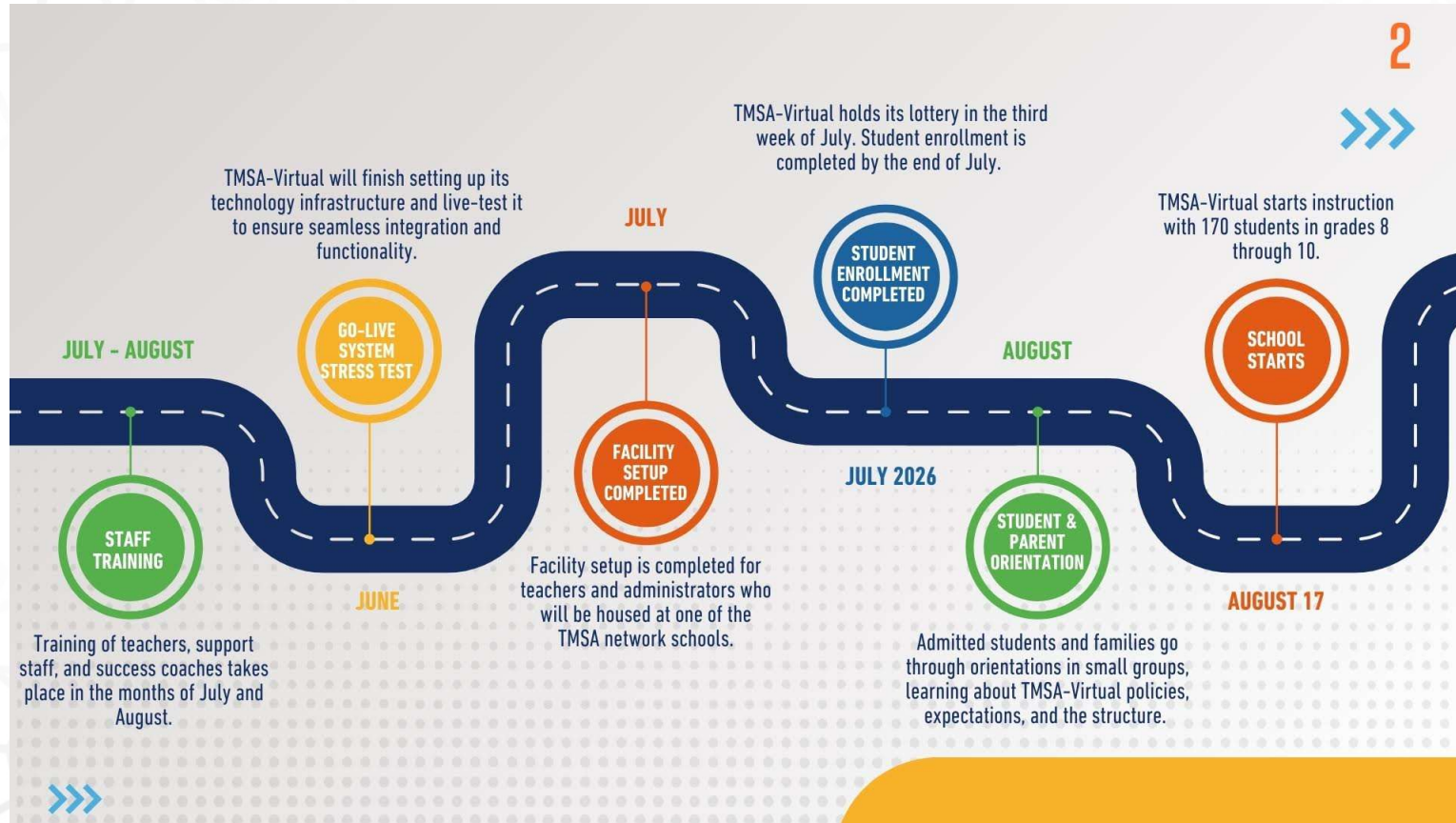
Roadmap



TMSA-VIRTUAL ROAD MAP TO OPENING



Roadmap continued





Questions

Closing Statement

