



**NORTH CAROLINA**  
State Board of Education  
Department of Public Instruction

---

# Report to the North Carolina General Assembly

---

## Low-Performing Districts and Schools, Improvement Planning and Statewide Support

*G.S. 115C-12(25)*

---

Date Due: November 15, 2024  
DPI Chronological Schedule, 2024-2025  
Reporting on the 2023-2024 School Year

## STATE BOARD OF EDUCATION

STATE BOARD OF EDUCATION VISION: Every public school student in North Carolina will be empowered to accept academic challenges, prepared to pursue their chosen path after graduating high school, and encouraged to become lifelong learners with the capacity to engage in a globally-collaborative society.

STATE BOARD OF EDUCATION MISSION: The mission of the North Carolina State Board of Education is to use its constitutional authority to guard and maintain the right of a sound, basic education for every child in North Carolina Public Schools.

### ERIC DAVIS

Chair: Charlotte – At-Large

### JILL CAMNITZ

Greenville – Northeast Region

### JOHN BLACKBURN

Linville – Northwest Region

### ALAN DUNCAN

Vice Chair: Greensboro – Piedmont-Triad Region

### REGINALD KENAN

Rose Hill – Southeast Region

### DONNA TIPTON-ROGERS

Brasstown – Western Region

### MARK ROBINSON

Lieutenant Governor: High Point – Ex Officio

### VACANT

North Central Region

### J. WENDELL HALL

Ahoskie – At-Large

### DALE FOLWELL

State Treasurer: Raleigh – Ex Officio

### OLIVIA OXENDINE

Pinehurst – Sandhills Region

### CATTY MOORE

Monroe – At-Large

### CATHERINE TRUITT

Superintendent & Secretary to the Board: Cary

### VACANT

Southwest Region

## NC DEPARTMENT OF PUBLIC INSTRUCTION

**Catherine Truitt, State Superintendent :: 301 N. Wilmington Street :: Raleigh, North Carolina 27601-2825**

In compliance with federal law, the NC Department of Public Instruction administers all state-operated educational programs, employment activities and admissions without discrimination because of race, religion, national or ethnic origin, color, age, military service, disability, or gender, except where exemption is appropriate and allowed by law.

### **Inquiries or complaints regarding discrimination issues should be directed to:**

Thomas Tomberlin, Senior Director, Educator Preparation, Licensure, and Performance, NCDPI  
6301 Mail Service Center, Raleigh, NC 27699-6301 / Phone: (984) 236-2114 / Fax: (984) 236-2099

**Visit us on the Web: [www.dpi.nc.gov](http://www.dpi.nc.gov)**

1023

## TABLE OF CONTENTS

Executive Summary .....	4
Introduction and Legislative Context.....	5
Legislation.....	5
Implementation of Legislation.....	7
Summary of 2024 Low-Performing Designations Based on Accountability Results .....	8
Support for Low-Performing Schools and Districts .....	11
Overview .....	11
Office of School Improvement .....	12
Diagnostic Services.....	12
School Reform Models.....	13
Office of Regional Support Services .....	16
Office of Federal Programs .....	17
Other Agency Support Initiatives .....	17
ESSER-Funded Support Initiatives Supporting Low-Performing Schools and Districts .....	18
CARES: An Intensive Intervention Coaching Pilot.....	18
NC Instructional Leaders Academy .....	20
Principal Mentoring Pilot .....	20
Planning for School and District Improvement.....	21
Trends and Patterns from Review of School and District Plans.....	21
Case Studies of School Improvement Plans Found to Significantly Improve Student Performance .....	22
Reporting on Personnel Actions Taken in Low-Performing Schools .....	22
Recommendations for Additional Legislation to Improve Student Performance; Increase Local Flexibility .....	25
Flexibility Provided to LEAs Impacted Significantly by Hurricane Helene .....	25
Appendix: Full Listing of State Low-Performing Designations .....	26

# **Committee on Low-Performing Districts and Schools, Improvement Planning, and Statewide Support**

## **EXECUTIVE SUMMARY**

G. S. §115C-12(25) requires the State Board of Education to submit a report to the Joint Legislative Education Oversight Committee (JLEOC) annually regarding schools identified as low-performing, school improvement plans found to significantly improve student performance, personnel actions taken in low-performing schools, and recommendations for additional legislation to improve student performance and increase local flexibility.

This report contains information regarding the implementation of G. S. §115C-105.37. Identification of low-performing schools; G. S. §115C-105.37B. Reform of continually low performing schools; G. S. §115C-105.39A. Identification of low-performing local school administrative units; and G. S. §115C-105.39. Dismissal or removal of personnel; appointment of interim superintendent. Specifically, the report provides a summary of the steps and processes developed and implemented by the North Carolina Department of Public Instruction to support those districts and schools identified as low performing based on the 2023-2024 performance results, including discussion of resources available and timelines of requirements provided to districts and schools across the state with state low-performing designations. Additionally, the report contains analysis of the 2023-2024 accountability results pertaining to low-performing schools and districts along with analysis of submitted school and district improvement plans based on the review conducted by NCDPI staff.

# INTRODUCTION AND LEGISLATIVE CONTEXT

The following section of this report provides a brief summary of legislation in connection with state low-performing school and low-performing district designations. Also included are the results of performance and growth data for low-performing districts and schools based on the analysis of School Performance Grades (SPG) from the 2023-2024 year as well as other information relevant to set the stage for the data and information to follow throughout the full report. Specifically, the following elements are included in this section to provide critical context for the full report:

- Summary of the legislation concerning low-performing districts and schools,
- Overview of the required timeline and process for 2024-2025 improvement plans other actions required upon receiving a low-performing designation,
- General information on NCDPI’s execution of actions and timelines contained in law, and
- Analysis of the 2023-2024 accountability results pertaining to low-performing schools and districts.

## LEGISLATION

In September 2015, Session Law 2015-241 House Bill 97, provided amended definitions for low-performing schools and a new designation for low-performing districts. Included in both the amended and new designations were specifically defined processes, procedures, and requirements for low-performing schools and districts. The following tables provide summary information regarding the requirements based on current legislation:

Table 1: September 2015 Statute for Low-Performing Schools and Local School Administrative Units

General Statute	Explanation
§ 115C-105.37. Identification of low-performing schools	Defines low-performing schools as those that receive a school performance grade of <b>D</b> or <b>F</b> <u>and</u> a school growth score of "met expected growth" or "not met expected growth"
§ 115C-105.39A. Identification of low-performing local school administrative units	Defines a low-performing school administrative unit as a unit in which the <b>majority</b> of the schools in that unit that earned an overall school performance grade and school growth score identified as <b>low-performing schools</b>

**Table 2: Low-Performing Legislative Requirements**

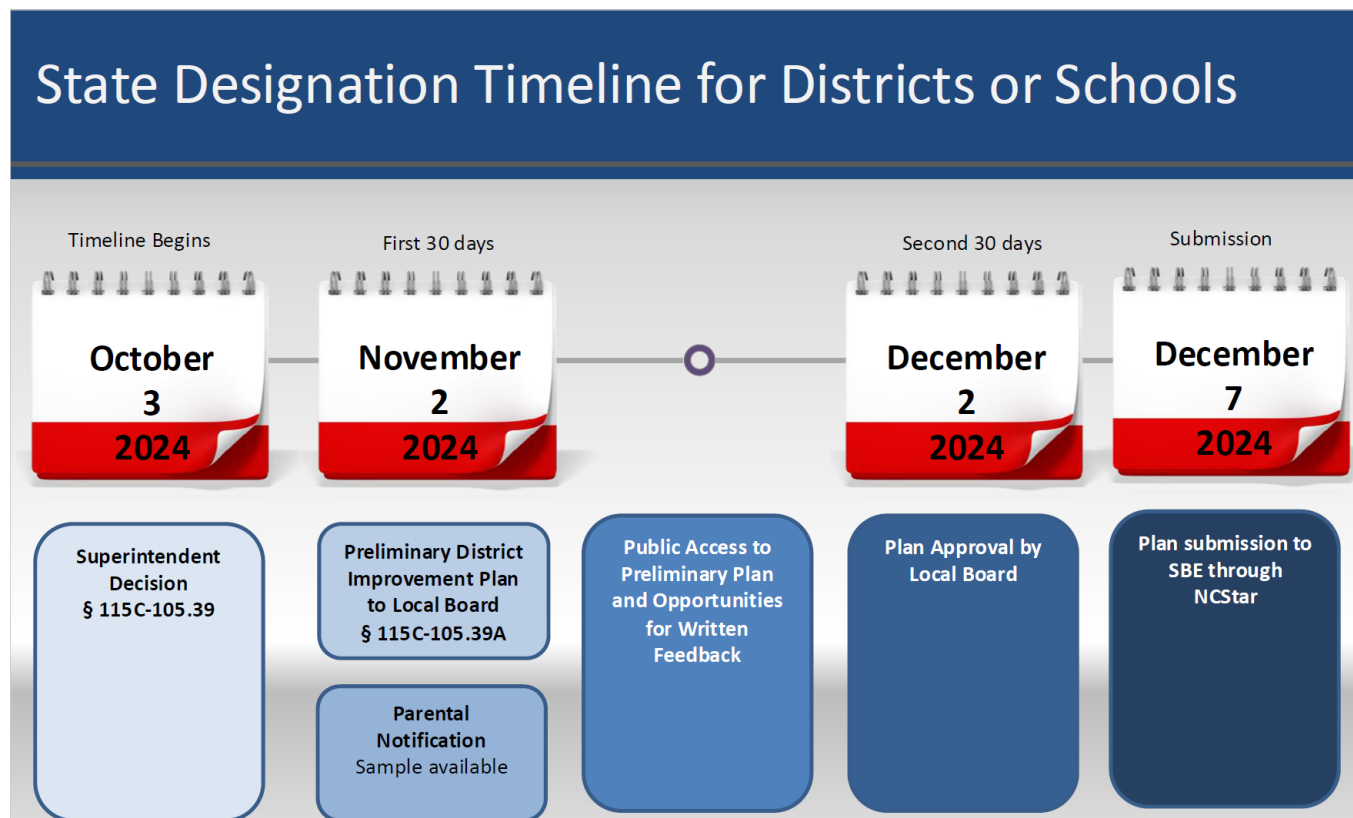
<b>Requirement According to Legislation</b>	<b>Explanation</b>	<b>Timeline/Deadline</b>
Identification	State Board of Education identifies low-performing schools and low performing districts	Annually
<b>Low-Performing Schools</b>		
Principal Decision	Superintendent determines from 4 options employment of the principal of each low-performing school	Within 30 days of low-performing designation
School Plan for Improvement	A preliminary plan (with public input) for improving both the school performance grade and school growth score submitted to the local board	Within 30 days of low-performing designation
Written Notification to Parents	Written notice should contain school's performance grade and growth score earned, and plan for improvement	Within 30 days of low-performing designation
Local Board Approval	Local Board approves, modifies, or rejects preliminary plan	Within 30 days of receiving the plan
Submit plan to State Board	The plan is submitted to the State Board for recommendations	Within 5 days of local board approval
Feedback regarding the plan	The State Board reads and provides recommendations about the plan	Expediently
Consider feedback	Local board amends the plan as needed and submits final plan to the State Board	After local board final approval
Access to the final plan	The final plan is accessible through local school administrative unit website and the NC Department of Public Instruction's website	Upon final submission
<b>Low-Performing Local School Administrative Unit</b>		
Principal Decision	Superintendent determines from 4 options employment of the principal of each low-performing school	Within 30 days of low-performing designation
District Plan for Improvement	A preliminary plan (with public input) for improving each schools' performance grade and school growth score, monitoring each schools' progress, and administrative unit's possible policy changes is submitted to the local board	Within 30 days of low-performing designation
Written Notification to Parents	Written notice should be sent to parents of all students attending any school deemed low-performing in the local administrative unit. Notification should define low-performing local school administrative unit, percentage of schools identified, information about individual low-performing school, and plan for improvement	Within 30 days of low-performing designation

Local Board Approval	Local Board approves, modifies, or rejects preliminary plan	Within 30 days of receiving the plan
Submit plan to State Board	The plan is submitted to the State Board for Recommendations	Within 5 days of local board approval
Feedback regarding the plan	The State Board reads and provides recommendations about the plan	Expediently
Consider feedback	Local board amends the plan as needed and submits final plan to the State Board	After local board final approval
Access to the final plan	The final plan is accessible through local school administrative unit website and NC Department of Public Instruction's website	Upon final submission

### IMPLEMENTATION OF LEGISLATION

The Department of Public Instruction provides a series of support services to guide districts and schools through the statutory requirements of a low performing school/district designation. Annually in September, the Department of Public Instruction provides informational webinars for both schools and districts about how to complete each of the requirements in the law, a visual timeline for completing all steps outlined in legislation, and regional trainings focusing on the platform used for submitting the comprehensive improvement plans. Districts/schools were given until December 4, 2023, to update/submit the 2023-2024 comprehensive improvement plan. After reminder emails and formal letters of noncompliance, 100% of schools and districts designated as Low Performing submitted an improvement plan via the NCStar platform

Figure 1: Timeline of Requirements for Schools and Districts



### SUMMARY OF 2024 LOW-PERFORMING DESIGNATIONS BASED ON ACCOUNTABILITY RESULTS

Based on 2023-2024 school accountability data reporting, there are 735 schools with a state low-performing designation and 23 districts with a designation of low-performing district, this is a reduction from 804 schools and 25 districts with those designations in prior year. The State Board of Education received the preliminary list of 2023-2024 low-performing schools, traditional and charter; low-performing districts; and continually low-performing schools in their September 2024 meeting and will finalize those designations by action in their October 2024 meeting. The full list of schools and districts can be found in the Appendix section of this report.

**Table 3: Summary of the 2023-24 State Designation of Low-Performing in Traditional Schools, Charter Schools and Districts by Region**

Year	SBE Region	District	Traditional	Charter	Lab
2024	North Central	5	125	13	0
2024	Northeast	5	52	1	0
2024	Piedmont-Triad	4	145	9	2
2024	Sandhills	5	82	6	0
2024	Southeast	1	60	8	1
2024	Southwest	3	149	15	1
2024	Northwest	0	39	1	0
2024	Virtual	0	0	2	0
2024	Western	0	23	0	1

**Table 4: Comparison Data for 2022-2023 to 2023-2024 of State Designations of Low Performing**

	Schools 2023	Schools 2024	Leavers LP Status	Stayers LP Status	Enters LP Status	Change
All LP	804	735	253	551	184	-69
LP Traditional Public Schools	741	675	228	513	162	-66
LP Lab Schools	3	5	1	2	3	2
LP Charter Schools	60	55	26	34	21	-5
LP Districts	25	23	8	17	6	-2
Continually LP Traditional Public Schools	658	730	59	599	131	72
Continually LP Charter schools	57	59	6	51	8	2

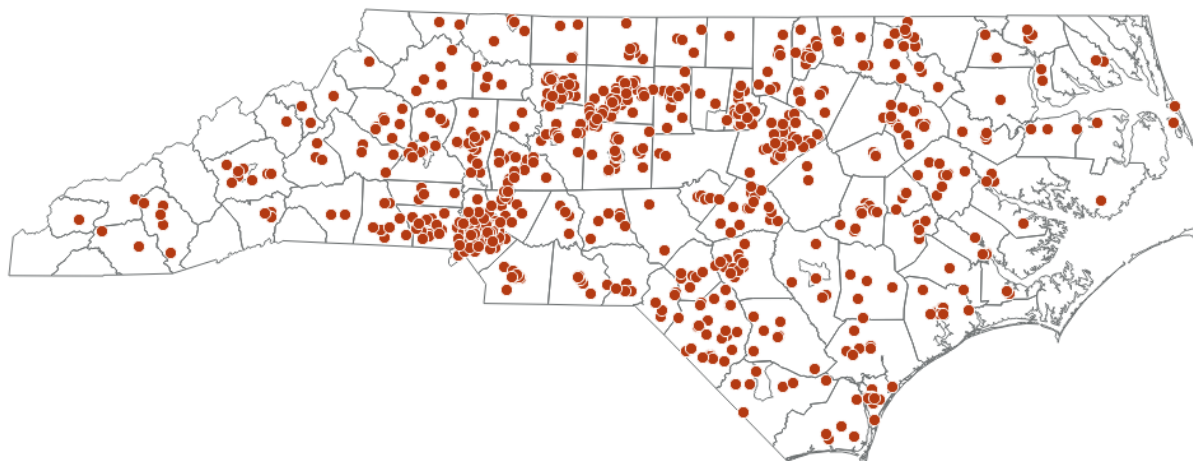


**Tables 5: Comparison Data for 2021-2022 to 2023-2024 of State Designations of Low Performing by School Performance Grade and Growth Status.** A comparison breakdown of the 2021-2022 and 2023- 2024 schools with a state designation of Low Performing by school performance grade and growth status by the definition criteria established in Session Law 2015-241 House Bill 97.

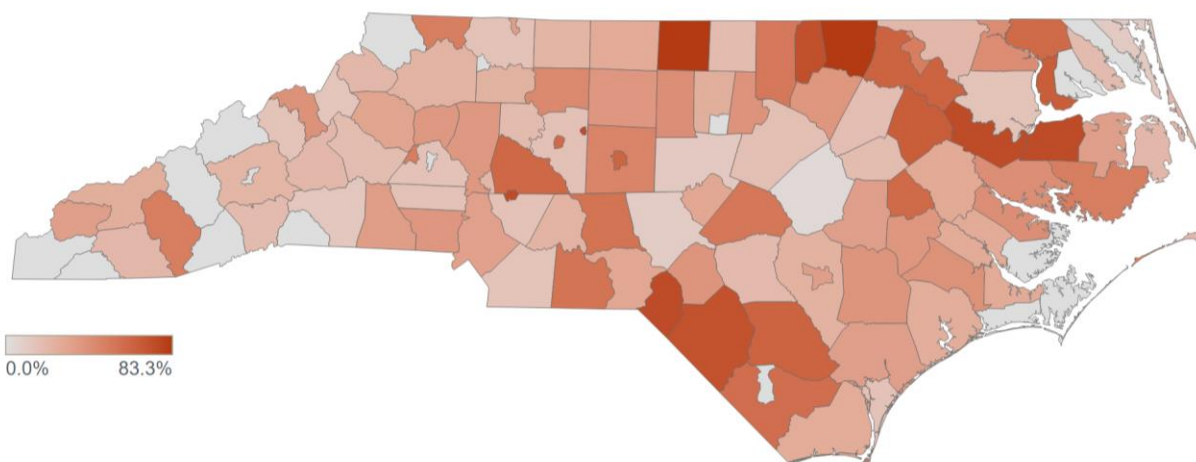
State Board Region	School Perf Grade	Growth Status	2022 Charter Schools 2023 Charter Schools 2024 Charter Schools			2022 Lab Schools 2023 Lab Schools 2024 Lab Schools			2022 Traditional Schools 2023 Traditional Schools 2024 Traditional Schools		
All	D	Met	28	24	22	1	0	3	292	319	300
All	D	Not Met	22	17	18	0	0	0	280	248	236
All	F	Met	10	10	6	3	2	1	95	54	41
All	F	Not Met	7	9	9	0	1	1	126	120	98
North Central	D	Met	7	4	4	0	0	0	63	76	68
North Central	D	Not Met	5	3	5	0	0	0	38	40	33
North Central	F	Met	2	2	1	0	0	0	16	6	6
North Central	F	Not Met	3	2	3	0	0	0	21	22	18
Northeast	D	Met	0	2	0	1	0	0	33	30	28
Northeast	D	Not Met	1	0	0	0	0	0	15	23	20
Northeast	F	Met	1	0	0	0	0	0	10	6	2
Northeast	F	Not Met	0	1	1	0	0	0	9	10	2
Northwest	D	Met	0	0	1	0	0	0	21	15	19
Northwest	D	Not Met	0	0	0	0	0	0	22	15	19
Northwest	F	Not Met	0	1	0	0	0	0	2	3	1
Piedmont-Triad	D	Met	4	6	5	0	0	2	60	54	62
Piedmont-Triad	D	Not Met	4	3	3	0	0	0	64	52	52
Piedmont-Triad	F	Met	1	1	0	2	2	0	19	11	8
Piedmont-Triad	F	Not Met	0	1	1	0	0	0	30	28	23
Sandhills	D	Met	1	4	4	0	0	0	32	45	44
Sandhills	D	Not Met	3	0	1	0	0	0	23	31	19
Sandhills	F	Met	1	0	0	0	0	0	13	6	3
Sandhills	F	Not Met	1	0	1	0	0	0	16	11	16
Southeast	D	Met	5	5	4	0	0	0	22	36	19
Southeast	D	Not Met	2	1	2	0	0	0	36	28	31
Southeast	F	Met	1	1	1	1	0	0	13	5	5
Southeast	F	Not Met	1	1	1	0	1	1	13	11	5
Southwest	D	Met	11	3	4	0	0	0	46	48	50
Southwest	D	Not Met	5	9	5	0	0	0	63	50	52
Southwest	F	Met	4	6	4	0	0	1	23	19	16
Southwest	F	Not Met	2	3	2	0	0	0	33	34	31
Virtual	D	Not Met	2	1	2	0	0	0	0	0	0
Western	D	Met	0	0	0	0	0	1	15	15	10
Western	D	Not Met	0	0	0	0	0	0	19	9	10
Western	F	Met	0	0	0	0	0	0	1	1	1
Western	F	Not Met	0	0	0	0	0	0	2	1	2

**Figure 2: Maps of Low-Performing State Designations**

*735 Schools with State Low-Performing Designation 2023 (Traditional, Charter, and Lab)*



*Percentage of Low-Performing Schools by LEA*

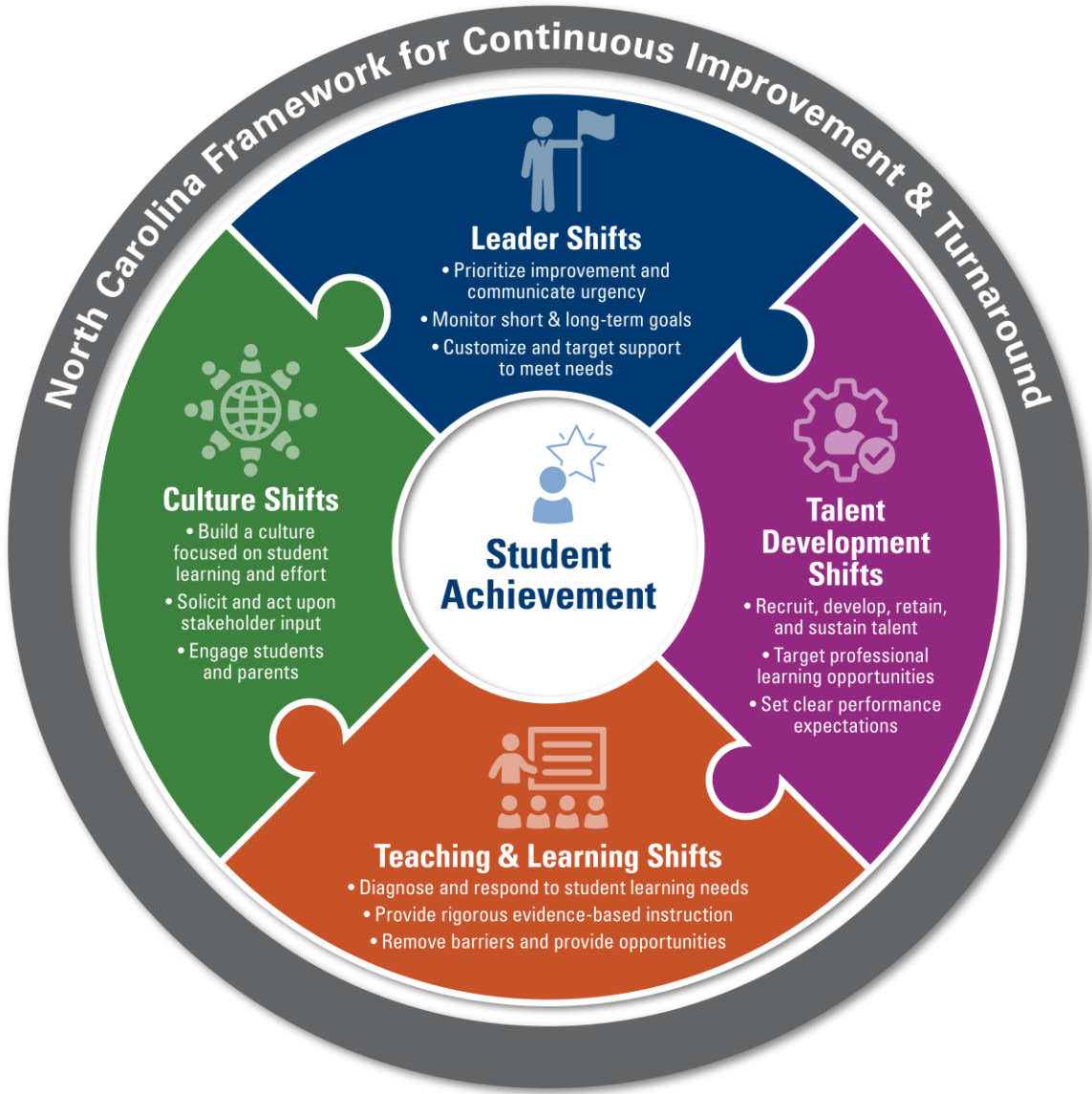


# SUPPORT FOR LOW PERFORMING SCHOOLS AND DISTRICTS

## OVERVIEW OF NORTH CAROLINA DEPARTMENT OF PUBLIC INSTRUCTION’S SUPPORT

The Department of Public Instruction provides a variety of support services to districts and schools designated as low performing. All schools and districts designated low performing receive feedback based on best practices related to school improvement planning. Additional services are provided to schools with a history of state low performing designations through the Office of School Improvement. The Office of School Improvement will support the schools and districts across the state with intentional coordination and collaboration with the Office of Regional Support Services and the Office of Federal Programs. All these organizational units will approach their work focused on supporting continuous school improvement aligned with the new North Carolina Framework for Continuous Improvement and Turnaround. This framework guides our agency’s work as we meet schools where they are, regardless of their label or designation, and support them as they work to achieve greater academic gains for students.

Figure 3: NC Framework for Continuous Improvement and Turnaround



## OFFICE OF SCHOOL IMPROVEMENT

In July 2024, the Office of District and Regional Support (DRS) was restructured to become the Office of School Improvement (OSI). OSI has a two-pronged approach: (1) Universal Support for School Improvement and (2) Transformation Support focused on low-performing schools. The school improvement group provides support for all schools and districts for continuous improvement while the transformation group provides customized, intensive support for low-performing schools and districts with the greatest needs. Universal support includes instructional leadership capacity building, school improvement planning support via NCStar, and needs assessment or diagnostic support. Transformation support includes curriculum support, reform model support (Restart), and turnaround leadership support addressing matters of governance and the removal of barriers to student success. The OSI also includes the Integrated Academic & Behavior Systems Team, who provides professional development and targeted support with MTSS implementation as well as differentiated support for schools designated as low-performing across 6 low-performing districts.

### Diagnostic Services

#### *Comprehensive Needs Assessments (CNA) and Follow-Through Support*

The CNA process and subsequent follow through support is provided to low-performing schools and districts; this includes CSI schools and districts designated as low performing. The CNA process is designed to give schools real-time, evidenced-based, third party feedback in six dimensions (Teaching & Learning, Student Support, Leadership Capacity, Professional Capacity, Planning and Operations, and Family and Community Engagement). Schools receive a prioritized list of strengths and areas for improvement. This feedback is then directly linked to district or school improvement efforts through a series of research-based protocols. During the 2023- 24 school year 71 CNA visits were conducted (69 schools visits and 2 district visits – a district visit consists of all schools in a district receiving a CNA and a culminating district office visit). In addition, 29 Targeted School Quality Reviews (TSQR) were conducted by the Diagnostic Services team – these visits are conducted for schools receiving Innovative Partnership (School Improvement) Grants. These grants are typically awarded to low performing schools. In total, for the 2023-24 school year, Diagnostic Services conducted 101 visits and produced 101 subsequent reports to support improvement planning in these schools and districts. Most schools that participated in a CNA also received a two-day unpacking training with their school improvement teams to support use of the report in planning around NCStar indicators using research-based protocols. Other follow-up support included a virtual session with each school's leadership team the week after the CNA site visit referred to as a Virtual Bridge Session (VBS) to jump start use of CNA feedback. Every school was then scheduled for a check in to occur quarterly following this session. The purpose of the check-in being to support ongoing use of the CNA feedback in school improvement efforts.

#### *Diagnostic Services: Transition and a New Approach*

With executive leadership changes and a revamped approach for school improvement support, the CNA process and structure was transitioned in July 2024 to a new model of support aimed at maximizing efficiency of limited agency staff while also focusing on extending the impact and reach of the support provided to schools. The transition in the work of the Diagnostic Services team includes a shift to a universal support model as opposed to one that focuses exclusively on low-performing schools. Under their direction a one-year pilot is being launched in partnership with the SERVE Center at UNCG. The pilot aligns with the four domains, also referred to as Shifts, for improvement (Culture Shift, Leader Shift, Talent Development Shift, and Teaching and Learning Shift – a transition from six dimensions in the CNA rubric). The pilot is an online school self-assessment referred to as CALL – Comprehensive Assessment

of Leadership for Learning. The program provides quick results that can be used by school leaders in numerous ways and requires fewer NCDPI staff positions to operate. Currently, 19 schools and 2 districts have agreed to participate in the CALL Pilot. Of the 19 schools 11 have a low-performing designation. Both districts participating in the pilot have been designated as low performing. School staff will take the online self-assessment and a series of protocols will be used by the Diagnostic Services team with schools as a means of follow-up support. Feedback on the pilot will be collected by SERVE. The theory of action for this approach is that using CALL will enable the NCDPI Diagnostic Services team to provide ongoing support maximizing efficiency by not requiring participation of cross-agency personnel pulled off their primary support roles only offering short-term assistance or feedback. Also, CALL will allow for the Diagnostic Services team to prioritize their work with districts on responding to the data and implementation of research-based practices, without the load of data collection.

Beyond the pilot, as part of a shift to universal support, in July 2024 the Diagnostic Services Team redesigned the NCStar self-assessment to reflect the four domains/NC Shifts previously noted. The self-assessment includes an abbreviated version and an extended version the latter of which allows for more in-depth discussion of the school's current state and next steps for improvement. In this way, there are two tiers of support within the NCStar Self-Assessment. A Canvas Course has also been developed to support schools in effectively utilizing the self-assessment, with tools that support the use of research-based strategies that facilitate accurate self-assessment. The NCStar self-assessment and supporting tools are all self-directed. In addition to the Canvas Course, universal support is slated to include a Webinar that is designed to embed the NC Shifts across schools. Support will be provided for three tiers of support that increase in intensity as it relates to diagnostic services to inform school improvement.

### **School Reform Models: Support for Continually Low Performing Schools**

Aligning with North Carolina's law for reform of low-performing schools (G.S. 115C-105.37B) the State Board of Education adopted a policy (DSTR-040) in May of 2016, allowing districts with continually low-performing schools an opportunity to apply for approval to implement components of several school reform model initiatives to include Transformation, Turnaround, Restart, and Closure. A summary of each reform initiative can be found in Table 4. Continually low-performing schools are those schools that have been low-performing for two of the previous three consecutive years. The list of continually low-performing schools can be found in the Appendix.

**Table 6: School Reform Models**

Transformation	In order to qualify for implementation of the transformation model, the LEA must demonstrate that a school has created a plan for developing and improving teacher and school leader effectiveness; for implementing comprehensive instructional reform strategies; for increasing learning time; for creating community-oriented schools; and for providing operational flexibility and sustain support. The LEA shall submit specific goals for academic 9 achievement and shall submit a budget showing the revenues and expenditures needed to reach the goals.
Turnaround	In order to qualify for implementation of the turnaround model, the LEA submits specific grounds supporting the implementation of this model; specifies the academic goals expected from implementation of this model; specifies the procedures to be utilized in removing staff, including procedures consistent with Due Process; describes with specificity the new governance structure and the budget to be implemented; sets forth specific academic achievement expected to be realized from use of this model.
Restart	In order to qualify for implementation of the restart model, the LEA submits a detailed plan outlining the goals to be achieved, including how to provide each student with the opportunity

	for a sound basic education; a statement as to how operating the school with the same exemptions from statutes and rules as a charter school authorized under N.C.G.S. 115C-218 et seq. will facilitate accomplishing these goals; how these exemptions will increase student achievement; whether the LEA will employ an educational management organization and, if so, the name and credentials of that organization and a budget setting out anticipated revenue and expenditures necessary to achieve the goal. A school operated under this subdivision remains under the control of the local board of education, and employees assigned to the school are employees of the local school administrative unit.
Closure	In order to qualify for implementation of the closure model, the LEA submits the specific grounds recommending closure of a particular school; the procedures it intends to follow in closing the school, including opportunities for public hearing; the procedures for ensuring a smooth transition for employee and students affected by the closure; how the resources realized from closure will continue to support student achievement, and the specific academic gains expected to be realized by the closure.

As of July 2024, twenty-seven school districts have been approved to implement a reform model, all of which selected the Restart Model. There are 174 schools across 9 cohorts implementing or preparing to implement the Restart Model. The first cohort began implementation of the Restart Model in the 2017-2018 school year and the most recent cohort will begin implementation in the 2025-2026 school year.

By December 1<sup>st</sup> of each year, All Reform Models are required by GS 115C-105.37B and State Board Policy DSTR-040 to submit an Annual Report documenting academic gains. After completing the first year of implementation of the approved Reform Model, schools submit the report after each year of implementation.

Restart Model schools are monitored for their progress in demonstrating Academic Gain. There are five criteria for Academic Gain including: Continually Low-Performing designation, School Growth Status, Achievement Score, Subgroup Growth Status, and school defined Flexibility Outcomes.

Yearly progress monitoring is conducted to inform the school if they are exceeding, meeting, or not meeting the expectations for Academic Gain, based on a comparison between the year before implementation and the most recent year of implementation. Progress monitoring is conducted after the submission of the annual report in December, and 2023-2024 data is approved by the SBE in October. Table 7 describes the Academic Gain status based on 2022-2023 data.

**Table 7: Restart Model Summary of Academic Gain (based on 2022-2023 data)**

<b>Academic Gain</b>	<b>Number of Schools (n=148)</b>
Exceeding Expectations	17% (25/148)
Meeting Expectations	57% (84/148)
Not Meeting Expectations	26% (39/148)

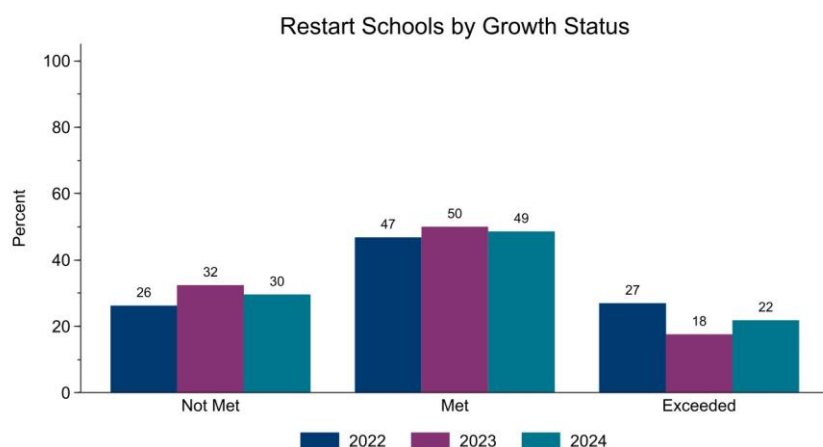
The *December 2023 Restart Annual Report* required reporting on the Restart flexibilities utilized in the 2022-2023 school year. Of the 148 Cohort 1-6 schools implementing the Restart Model and required to report, the following Table 8 represents a summary of the flexibilities reported as being employed in the Annual Report. Flexibilities are self-reported in the Annual Report.

**Table 8: Restart Model Summary on Utilized Flexibilities During 2022-2023 (Based on December 2023 Annual Report)**

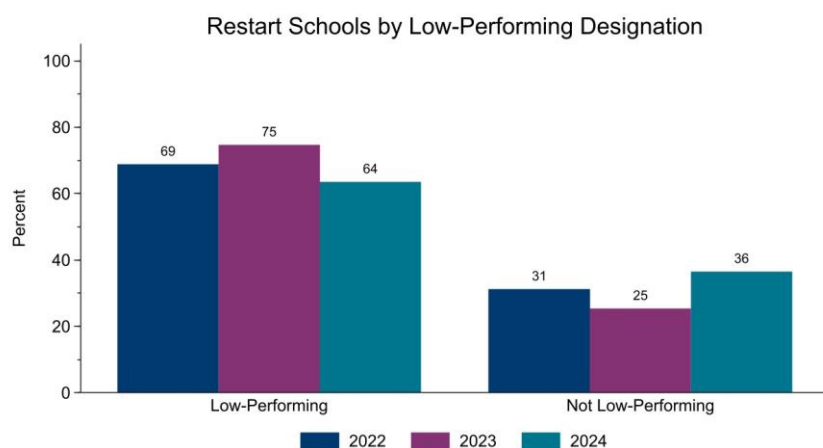
<b>Flexibility/Exemption from law</b>	<b>Percentage of Schools Utilizing Flexibility</b>	<b>Number of Schools Utilizing Flexibility</b>
Budget	96%	142/148 Schools
Calendar	33%	49/148 Schools
Employment Requirement	47%	70/148 Schools
Standard Course of Study/Curriculum	6%	9/148 Schools
Assessment	9%	14/148 Schools
Class Size	5%	7/148 Schools

Preliminary data released to the SBE in September 2024 indicate the following changes based on 2023-2024 performance data in Figure 3 and Figure 4. Please note these tables represent schools continuing in Restart during the comparison years.

**Figure 4 Restart Schools by Growth Status**



**Figure 5 Restart Schools by Low-Performing Designation**



## **OFFICE OF REGIONAL SUPPORT SERVICES**

The Regional Director team develops and aligns systems, processes and procedures to provide a unified system of statewide support to North Carolina Local School Administrative Units (LEAs). Other key duties include:

- Serving as the primary NCDPI contact for district senior leadership staff and providing regularly scheduled NCDPI updates, opportunities, and deadlines.
- Providing a communication loop to district staff, principals, and teachers about the knowledge and skills needed to facilitate policies, processes and practices focused on improving student achievement.
- Providing oversight, management, and supervision to align work processes with NCDPI and district staff.
- Leading cross-NCDPI Regional Support Teams, coordinating support and services provided in each region; and providing all internal and external communication regarding the team's work and support.
- Engaging in site visits, thought partner sessions, and strategic planning.
- Customizing support for districts.

Regional Support Teams (RST) are a product of the North Carolina State Board of Education's commissioned Ernst and Young efficiency study of the North Carolina Department of Public Instruction. The RST is composed of regionally based consultants from the following areas at NCDPI: Accountability, Career & Technical Education; Digital Teaching and Learning; Early Learning; Exceptional Children; Educator Preparation, Licensure & Performance; Federal Programs; Integrated Academic & Behavior Support. Under the direction of Regional Directors, RSTs provide an individualized and differentiated approach to district and regional support. Within the model there are three basic entry points that prompt support from the regional team:

- Low-performing designation (federal or state)
- District-initiated requests (i.e.: customized support)
- Regional support team-initiated offerings (based on regional needs)

Sample activities where the Office of Regional Support has customized support for low-performing schools and LEAs include:

- Priority partnerships in each region focused on those LEAs that request the most assistance and support with student performance.
- Intensive planning with LEA leadership to customize support from NCDPI to increase academic achievement.
- Professional learning on MTSS implementation.
- Customized district and school level framework development and professional development on increasing student engagement in secondary classrooms.
- Middle school leadership and instructional support.
- New principal transition and coaching support.
- Principal mentoring ESSER pilot project.
- Working with central office leaders on secondary high expectations and instructional rigor.



## OFFICE OF FEDERAL PROGRAMS

The Office of Federal Programs ensures that federal and state education funds contribute to the goal of all students meeting or exceeding rigorous state standards. The office manages a large portfolio of federal grant funds while also monitoring and supporting schools and districts in their implementation of various improvement initiatives. An analysis of agency staffing assigned in direct support of school improvement initiatives results in the following breakdown of funds between federal funds (across all ESEA funding sources) and state appropriations (estimates based on budget as of September 18, 2024):

- Federal Funds Salary & Benefits: 24 FTE - \$3,666,871.00
- State Appropriation Salary & Benefits: 8 FTE - \$1,195,442
- *Total Investment in School Improvement Agency Personnel: 32 FTE - \$ 4,862,313.00*  
(Federal Grants + State Appropriation)

This investment in agency personnel represents those staff members who are focused on school improvement support, but those staff members are not necessarily exclusively assigned to providing support for state-designated low-performing schools or districts. Furthermore, there exists a great deal of complexity when considering the additional designations applied to schools across North Carolina as required by federal accountability reporting in addition to requirements contained in state law. Many schools with a low-performing state designation may also have a federal designation of CSI (Comprehensive Support and Improvement) or ATSI (Additional Targeted Support and Improvement), as well. This creates multiple layers of reporting and a significant number of required actions for school and district personnel when a state low-performing designation and associated requirements are in place in addition to a federal designation.

## OTHER AGENCY SUPPORT INITIATIVES FOR LOW-PERFORMING SCHOOLS AND DISTRICTS

### *Office of Early Learning – Early Literacy Specialists*

The Office of Early Learning has developed a tiered coaching model to support an aligned system, from the state to student. The model includes 115 Early Literacy Specialists (ELS) assigned to each NC school district. These positions are designed to collaborate first and foremost with district leaders who support literacy implementation across the local school system at least one or two days per week. They should be a consistent member of the district's local planning team to bridge communication, support and resources aligned to ongoing evidence-based literacy best practices developed and provided by the state. Additionally, each district must determine how the ELS information and resources will filter to every school in the district. This typically includes training of school leaders, coaches, advanced teaching roles and/or literacy champions. Furthermore, each ELS directly provides an additional layer of support within at least two or three local schools each week. The ELS collaborates with the school leadership team to identify goals and priorities at each of their assigned focus schools. This support includes PLC guidance, professional development, ongoing coaching cycles and modeling in classrooms as needed. Support is differentiated based on school data and specific needs.

The ELS coaching framework is unique to most coaching models with an intentional support that puts an emphasis on the overall larger system, funneling attention and support throughout the whole district, as well as an intentional, more narrow stream of support for specific schools based on needs and data. Unlike most practices of selecting only low-performing schools, which extends temporary focused support until scores improve, this model is two-fold, supporting the larger system as well as priority schools within the larger system. Many support models still tend only to focus on low-performing

schools, which tends to neglect any schools who are barely above the required benchmark. This results in one school coming out of improvement, while others fall into improvement. Support is then pulled from one school to the next or stretched thin. The coaching and support approach of the Office of Early Learning is designed not only to support schools who are struggling the most but also to be proactive in preventing problems by focusing on systems improvement.

#### *Office of Charter Schools*

The Office of Charter Schools (OCS) established a school improvement workflow in July of 2023 to elevate support for low-performing charter schools. OCS utilizes indicators of distress for early identification of struggling schools and collaborates across its office and within NCDPI to develop prevention strategies. Site visits occur pursuant to a site visit protocol and with standardized data forms and focus questions.

For schools identified as low- or continually low-performing, OCS uses an internal system of prioritizing risk to determine which schools will receive a site visit. During this visit, OCS consultants conduct classroom observations followed by a collaborative conversation with the school's leadership team. This allows time for reflection, suggested resources for support, and specific actions that may help the school achieve its academic goals. Finally, the school leader receives written feedback which includes academic data, areas of strength, and recommended areas for growth. Following site visits, OCS develops a follow-up protocol based on the observation which may include additional site visits, remote check-ins with leadership, or support for specific areas of growth.

### **ESSER-FUNDED INITIATIVES DESIGNED TO SUPPORT CONTINUALLY LOW-PERFORMING SCHOOLS AND DISTRICTS**

#### **CARES: An Intensive Intervention Coaching Pilot**

The piloted CARES Transformation model was funded by ESSER funds (see table below) and comprises the state's most intensive support model for low-performing schools and districts. The model requires a formal partnership between the Department and a district to identify and remedy root cause(s) and develop highly focused incremental action steps with performance measures and clearly monitored plans for improved guidance. The pilot began in 2021 and is scheduled to sunset September 30, 2024.

Schools were targeted for CARES supports based on three criteria: a) continual low-performing status since 2015–16 designation; b) high poverty status (>70%, as defined in *WestEd report*), and c) proportion of students impacted within the district. Schools that met these criteria were invited to partner with NCDPI District and Regional Support (DRS) Team to receive CARES Transformation supports. The support encompasses consistent, tailored, multi-level coaching at the classroom, principal, curriculum, and district leadership level. The principal serving as an instructional leader is a key ideal in the CARES transformation model.

The CARES model was predicated on the state's Race to the Top initiative, Turning Around Low Achieving Schools (TALAS) that showed success improving high school graduation rates. Specific model enhancement included the addition of a district curriculum coach for focus on alignment with North Carolina Standard Course of Study, pairing of the instructional coach and school leadership coaching working within the same schools, maintaining a 6 to 1 school to coach ratio, and moving from subject matter instructional coaches to more pedagogical instructional coaches.

### CARES Pilot Funding

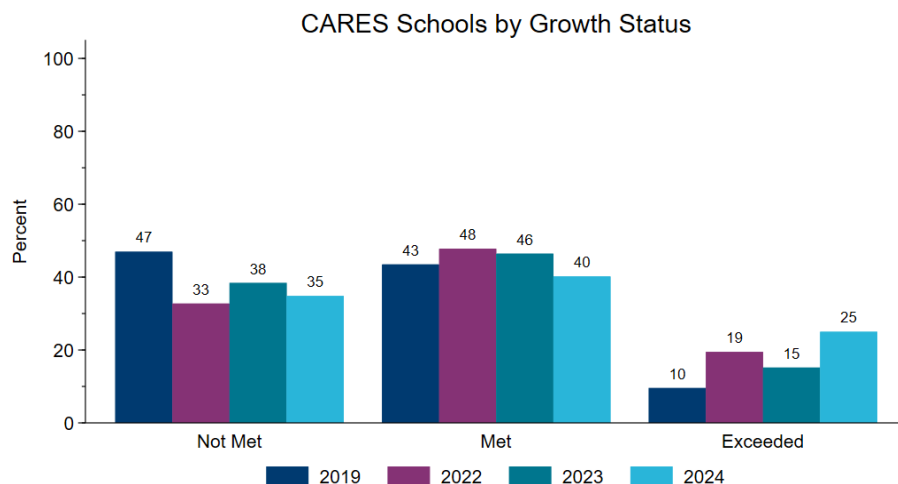
2021–22 ESSER Budget	2022–23 ESSER Budget	2023–24 ESSER Budget
<ul style="list-style-type: none"> <li>- 4 District Leadership Coaches</li> <li>- 14 School Leadership Coaches</li> <li>- 0 Instructional Coaches</li> </ul>	<ul style="list-style-type: none"> <li>- 5 District Leadership Coaches</li> <li>- 14 School Leadership Coaches</li> <li>- 4 Instructional Coaches</li> </ul>	<ul style="list-style-type: none"> <li>- 6 District Leadership Coaches</li> <li>- 14 School Leadership Coaches</li> <li>- 11 Instructional Coaches</li> </ul>
- Supported 81 schools in 24 districts	- Supported 102 schools in 24 districts	- Supporting 115 schools in 24 districts.
<b>ESSER cost:</b> approximately \$3,000,000	<b>ESSER cost:</b> approximately \$3,700,000	<b>ESSER cost:</b> approximately \$4,800,000

### Pilot Preliminary Outcomes

When the CARES Intensive Intervention work started in 2021-2022, coaches were deployed to support 81 schools and 24 districts. In 2022-2023, district leaders in the 24 districts requested that support be expanded to 102 schools. In 2023-2024 support was extended to 115 schools. Six districts were targeted to receive the full range of support including district-level coaching. These six districts were: Anson County Schools, Nash County Public Schools, Northampton County Schools, Public Schools of Robeson County, Tyrrell County Schools, and Washington County Schools. In 2022-2023, both Tyrrell County Schools and Nash County Public Schools successfully exited low-performing district status. In 2023-2024, Tyrrell County Schools and Nash County Public Schools were joined by Northampton County Schools as districts no longer designated low performing. After three years of participation in the CARES intervention, 50% of the districts targeted were no longer low performing.

The figure below shows the change in growth status by percentage for schools participating in the CARES initiative. Schools that previously did not meet growth decreased from 47% in 2018-2019 (baseline, pre-COVID year) to 35% in 2023-2024 and schools that exceeded growth increased from 10% in 2018-2019 to 25% in 2023-2024. Schools that exceed growth are no longer considered low performing in the accountability model. It should be noted that schools were added to the program each school year starting with 81 schools in 2021-2022 growing to 115 schools by 2023-2024 and that different levels of service and intensity of support were provided to schools throughout the period of programming and intervention based on demonstrated need and other local, contextual factors.

**Figure 6: CARES Schools by Growth Status**



### *CARES Pilot Evaluation*

In December 2021, the Education Policy Initiative at Carolina and North Carolina Central University were awarded a two-year grant by the NC Collaboratory with the aim of providing a deeper understanding of implementation activities, perceptions of efficacy, and school improvement impacts for these ESSER-funded supports, ultimately contributing to decision-making around how best to aid in recovery and accelerate learning for all students. The two-year study produced some key takeaways about the piloted intensive intervention model:

- The coaching focal areas perceived to have the greatest leverage in impacting student achievement included strengthening instructional leadership capacity of principals, developing knowledge and skills for data-driven instruction, and implementing a common curriculum aligned with state standards. All principal survey respondents said that CARES coaching in these areas moderately or greatly impacted student achievement.
- Perceptions of the NC Instructional Leadership Academy were highly positive as well. Over 90% of participants indicated they were satisfied with the sessions, offered high quality content and facilitation, and would help them to become a more effective leader.
- Superintendents, principals, and teachers shared concrete examples of ways coaching addressed core barriers to school improvement, and facilitated behaviors with an established evidence base for improving student outcomes (e.g. using data to differentiate instruction)

The NC Collaboratory research is ongoing, and additional analysis will be available by January 2025.

### **North Carolina Instructional Leadership Academy (NCILA)**

Employing ESSER funding, the NCILA professional development series was offered to all low performing schools designated during the 2020-2021 year. It also served as an accompaniment to the piloted CARES intensive intervention with all principals and principal managers at CARES schools participating in the PD series. Approximately 1500 district and school leaders formed teams representing 406 schools from 60 districts and 13 charters engaged with NC ILA, attending a series of ten face-to-face professional development workshops built around evidence-based approaches to strengthening instructional leadership skills. Sessions focused on topics such as: Observation & Feedback; Leading an Equity Centered Student Culture; Deconstructing Standards; Data Meetings; and Planning Meetings. The curriculum is centered around developing instructional leadership skills framed within the evidence-based “Leverage Leadership” model (Bambrick-Santoyo, 2012 & Bambrick-Santoyo, 2018). The PD series spanned two years allowing participants to put best-practice methods into action immediately and return for follow-up support to deepen learning. The sessions concluded in May 2024. During exit surveys, 90% of participants agreed or strongly agreed that the content is of high-quality, and 90% of participants were satisfied or very satisfied with their Relay/NCILA experience.

### **Principal Mentoring Pilot, New Hanover County Schools**

This ESSER-funded pilot was developed as part of the Regional Support Structure within the Office of Regional Support in response to a request from the Superintendent and senior leaders of New Hanover County Schools, who sought customized support for five elementary and middle schools identified as low-performing. With a total cost per mentor assignment of \$14,000, including mentor stipend and travel expenses, the approach was viewed as a very cost-effective approach. The district’s goal was to partner with NCDPI to provide peer mentor principals for the leaders of these schools. The mentor principals, who have successfully turned around low-performing schools, brought valuable, real-time insights to colleagues facing similar challenges. The initial outcomes of the pilot show some promise,

suggesting the approach may demonstrate efficiency and effectiveness in improving student achievement and retaining principals in low-performing schools warranting further study and exploration. This pilot is also being evaluated by the Education Policy Initiative at Carolina, and additional analysis will be available by January 2025.

*Project Overview*

- Mentoring principals received a monthly stipend and reimbursement for travel expenses, covering up to three school visits.
- Goal-setting meetings were conducted with district leaders and principal supervisors.
- Each mentor principal made an initial visit to their assigned low-performing school to familiarize themselves with the campus and meet their principal partner.
- Mentors had the opportunity to conduct two additional visits during the 12-month pilot.
- Weekly one-on-one virtual coaching sessions conducted between mentor and the principal.
- Mentors maintained regular contact with the principal’s supervisor(s).
- Additional check-ins scheduled based on the partner principal's district assessment calendar.
- Oversight of the project included regular data collection and reviews with the Superintendent, the Chief Academic Officer, and the NCDPI Southeast Regional Director.

**PLANNING FOR SCHOOL AND DISTRICT IMPROVEMENT**

**TRENDS AND PATTERNS FROM REVIEW OF SCHOOL AND DISTRICT PLANS**

The Office of District & Regional Support and the Office of Charter Schools provided feedback to low-performing districts, schools, and charters within each region through NCStar. NCStar is a web-based platform that guides a district or school team in charting its improvement and managing the continuous improvement process.

The plans for improvement submitted by low-performing districts and schools focused on practices that would help achieve yearly goals and were submitted to the North Carolina Department of Public Instruction for feedback through NCStar. Many of the plans contained similar strategies for addressing the needs in low-performing schools, and the data summarized in Table 3 also suggests implications for ongoing professional development to continue to build the capacity of district and school personnel. Identifying these trends has been an integral aspect of developing and continuing effective practices of support for classroom, building level, and district level personnel.

In addition to the themes found in the table below, one common finding is the limited coaching statewide that is occurring from district to schools regarding school improvement. Many districts lack the human capital and resources to devote time to assist school administrators and/or school improvement teams.

**Table 9: Common Themes in School Improvement Plans Reviewed**

Areas for Growth
Plan is a compliance artifact that helps meet statutory requirements instead of a guiding, living document that drives improvement
Inconsistent School Improvement Team meetings and documentation of meeting minutes that demonstrate actions taken regarding the plan
Lack of understanding of a tiered-instructional model that contains interventions that help all students achieve success

<b>Promising Improvements</b>
Distribution of action steps and indicators in plans resulting in leadership capacity being built schoolwide and sustainability of transformative practices
Increased use of performance measures that help the school keep track of progress towards goals and allow for data-driven decisions to be made throughout the school year
Increased participation and membership of school improvement team members such that more voices are heard in decision-making process
Stronger evidence of vision and aligned action for school implementation of effective practices.

## CASE STUDIES OF SCHOOL IMPROVEMENT PLANS FOUND TO SIGNIFICANTLY IMPROVE STUDENT PERFORMANCE

*Local superintendents and NCDPI staff have been asked to report on school-level case studies that are responsive to this for the State Board to consider including in subsequent reporting. The State Board of Education may elect to add information to this report on school improvement plans by submitting an addendum to this report or a revised report in early 2025.*

## REPORTING ON PERSONNEL ACTIONS TAKEN IN LOW-PERFORMING SCHOOLS

### § 115C-105.39. Dismissal or removal of personnel; appointment of interim superintendent.

#### *Superintendent's Action Concerning the School's Principal*

“(a) Within 30 days of the initial identification of a school as low-performing by the State Board under G.S. 115C-105.37(a), the superintendent shall take one of the following actions concerning the school's principal: (i) recommend to the local board that the principal be retained in the same position, (ii) recommend to the local board that the principal be retained in the same position and a plan of remediation should be developed, (iii) recommend to the local board that the principal be transferred, or (iv) proceed under G.S. 115C-325.4 to dismiss or demote the principal.”

Local School Administrative Unit	Total Number Designated Schools	(i) principal retained	(ii) principal retained, plan of remediation	(iii) principal transferred	(iv) dismiss or demote principal	N/A- Resigned/Retired/ School Closure
Alexander County Schools	4	1	3	-	-	-
Alleghany County Schools	2	1	1	-	-	-
Anson County Schools	5	2	2	-	-	1
Asheboro City Schools	5	2	-	2	-	1
Avery County Schools	1	-	-	-	-	1
Beaufort County Schools	5	5	-	-	-	-
Bertie County Schools	1	-	1	-	-	-
Bladen County Schools	7	3	-	-	-	4
Brunswick County Schools	5	2	1	-	-	2
Burke County Schools	4	3	1	-	-	-
Cabarrus County Schools	6	1	3	1		1
Caldwell County Schools	7	6	-	-	-	1
Catawba County Schools	4	3	-	-	-	1
Caswell County Schools	5	4	1	-	-	-

Charlotte-Mecklenburg Schools	56	32	15	-	-	9
Cleveland County Schools	9	7	2	-	-	-
Clinton City Schools	1	1	-	-	-	-
Columbus County Schools	7	5	-	-	-	2
Craven County Board of Education	7	6	1	-	-	-
Cumberland County Schools	15	-	15	-	-	-
Currituck County Schools	1	1	-	-	-	-
Dare County Schools	2	2	-	-	-	-
Davidson County Schools	5	2	-	3	-	-
Davie County Schools	2	-	2	-	-	-
Duplin County Schools	5	-	5	-	-	-
Edenton-Chowan Schools	2	2	-	-	-	-
Elizabeth City-Pasquotank Public Schools	2	2	-	-	-	-
Franklin County Schools	6	-	6	-	-	-
Gaston County Schools	19	16	2	-	-	1
Gates County Schools	3	-	1	1	1	-
Graham County Schools	1	-	-	-	-	1
Granville County Schools	8	6	-	-	-	2
Greene County Schools	3	3	-	-	-	-
Halifax County Schools	7	6	1	-	-	-
Hertford County Schools	3	2	1	-	-	-
Hickory City Schools	4	2	-	-	-	2
Hoke County Schools	5	1	1	3	-	-
Hyde County Schools	1	1	-	-	-	-
Iredell-Statesville Schools	13	7	1	5	-	-
Jackson County Public Schools	4	3	-	-	-	1
Jones County Schools	2	-	2	-	-	-
Kannapolis City Schools	6	4	1	-	-	1
Lee County Schools	4	1	-	-	-	3
Lenoir County Public Schools	6	4	2	-	-	-
Lexington City Schools	3	3	-	-	-	-
Lincoln County Schools	3	-	2	-	-	1
Macon County Schools	2	1	-	-	-	1
Martin County Schools	6	2	-	2	-	2
McDowell County Schools	3	-	2	1	-	-
Mitchell County Schools	2	-	-	-	-	2
Montgomery County Schools	5	3	-	2	-	-
Moore County Schools	2	2	-	-	-	-
Mooresville Graded School District	1	1	-	-	-	-
Mount Airy City Schools	1	-	-	-	-	1
Nash County Public Schools	4	1	1	-	-	2
New Hanover County Schools	6	5	-	-	-	1
Northampton County Schools	1	1	-	-	-	-

Onslow County Schools	10	8	1	-	-	1
Orange County Schools	3	3	-	-	-	
Pender County Schools	6	2	3	-	-	1
Person County Schools	2	1	-	-	-	1
Pitt County Schools	10	8	2	-	-	-
Public Schools of Robeson County	26		26	-	-	-
Randolph County School System	15	7	8	-	-	-
Richmond County Schools	4	4	-	-	-	-
Roanoke Rapids City Schools	2		2	-	-	-
Rockingham County Schools	6	5	-	-	-	1
Rutherford County Schools	2	1	1	-	-	-
Scotland County Schools	6	6	-	-	-	-
Stanly County Schools	5	3	2	-	-	-
Stokes County Schools	4	1	-	-	-	3
Surry County Schools	3	2	-	1	-	-
Swain County Schools	1	1	-	-	-	-
Thomasville City Schools	3	2	1	-	-	-
Tyrrell County Schools	1		-	-	-	1
Union County Public Schools	7	5	-	1	-	1
Washington County Schools	3	1	-	-	2	-
Watauga County Schools	2	2	-	-	-	-
Weldon City Schools	2	1	-	-	1	-
Wilkes County Schools	5	5	-	-	-	-
Wilson County Schools	4	3	1	-	-	-
Winston Salem / Forsyth County Schools	32	13	13	-	-	6
Yadkin County Schools	3	-	2	-	-	1
<b>No Report Submitted from LEA</b>	<i>Total Number Designated Schools</i>	(i) principal retained	(ii) principal retained, plan of remediation	(iii) principal transferred	(iv) dismiss or demote principal	N/A- Resigned/Retired/ School Closure
Alamance	15	No Report Received				
Chatham	2	No Report Received				
Durham	20	No Report Received				
Harnett	14	No Report Received				
Johnston	1	No Report Received				
Sampson	4	No Report Received				
Vance	11	No Report Received				
Wake	31	No Report Received				
Warren	5	No Report Received				
Wayne	10	No Report Received				

*Note: The following districts were significantly impacted by Hurricane Helene and, as such, NCDPI did not request reporting from them as they focused on re-opening school for students and associated recovery efforts: Buncombe, Henderson, and Yancey.*



### *Appointment of an Interim Superintendent*

“(c) The State Board may appoint an interim superintendent in a local school administrative unit:

(1) Upon the identification of more than half the schools in that unit as low-performing under G.S. 115C-105.37; or

(2) Upon the recommendation from an assistance team assigned to a school located in that unit that has been identified as low-performing under G.S. 115C-105.37. This recommendation shall be based upon a finding that the superintendent has failed to cooperate with the assistance team or has otherwise hindered that school's ability to improve.”

Currently, the State Board of Education has appointed interim superintendents serving in the following local school administrative units:

-Northampton County Schools

-Weldon City Schools

### **RECOMMENDATIONS FOR ADDITIONAL LEGISLATION TO IMPROVE STUDENT PERFORMANCE AND INCREASE LOCAL FLEXIBILITY**

*The State Board of Education may elect to submit recommendations for “additional legislation to improve student performance and increase local flexibility” by submitting an addendum to this report or a revised report in early 2025. Local superintendents and NCDPI staff have been asked to share recommendations for the State Board to consider including.*

### **FLEXIBILITY PROVIDED BY NCDPI TO WESTERN NC DISTRICTS SIGNIFICANTLY IMPACTED BY HURRICANE HELENE**

*The North Carolina Department of Public Instruction intends to be of prompt service and high-quality support to all areas impacted by Hurricane Helene in North Carolina. It is our goal to alleviate the unprecedented hardship and pressure that school districts have experienced recently, to the extent possible.*

*Schools and districts designated as low performing are required to follow through on a series of steps related to school improvement planning and personnel actions pursuant G.S. §115C-105.37 [Identification of Low-performing schools], § 115C-105.39A [Identification of low-performing local school administrative units], § 115C-333 [Evaluation of licensed employees including certain superintendents; mandatory improvement plans; State board notification upon dismissal of employees], and §115C-105.39 [Dismissal or removal of personnel; appointment of interim superintendent]. We recognize a need to allow for timeline flexibility for the school districts that are most heavily impacted regarding these submissions due to the State Board of Education from September 2024 through January 2025. NCDPI’s Office of School Improvement and Office of Regional Support Services will continue to work with our schools and districts as they navigate these most challenging times.*

*For reference, the Federal Disaster Declaration covers the following counties for North Carolina: Alexander, Alleghany, Ashe, Avery, Buncombe, Burke, Caldwell, Catawba, Clay, Cleveland, Gaston, Haywood, Henderson, Jackson, Lincoln, Macon, Madison, McDowell, Mitchell, Polk, Rutherford, Transylvania, Watauga, Wilkes, and Yancey Counties.*

## APPENDIX

### FULL LISTING OF STATE LOW-PERFORMING DESIGNATIONS

#### 2023–24 Low-Performing Schools List

A low-performing school has a School Performance Grade of 'D' or 'F', and a growth status of 'Met' or 'Not Met.'  
Schools are sorted by public school unit code with charter schools at the end of the list.

District Name	School Code	School Name	State Board Region	Grade Span	School Performance Grade	EVAAS Growth Status
Alamance-Burlington Schools	010326	Eastlawn Elementary	Piedmont-Triad	PK-05	D	Met
Alamance-Burlington Schools	010346	B. Everett Jordan Elementary	Piedmont-Triad	0K-05	D	Met
Alamance-Burlington Schools	010350	Graham Middle	Piedmont-Triad	06-08	F	Not Met
Alamance-Burlington Schools	010354	Harvey R Newlin Elementary	Piedmont-Triad	PK-05	F	Met
Alamance-Burlington Schools	010357	Haw River Elementary	Piedmont-Triad	PK-05	F	Not Met
Alamance-Burlington Schools	010358	Hillcrest Elementary	Piedmont-Triad	PK-05	D	Met
Alamance-Burlington Schools	010360	Hugh M Cummings High	Piedmont-Triad	09-12	D	Met
Alamance-Burlington Schools	010364	North Graham Elementary	Piedmont-Triad	PK-05	F	Not Met
Alamance-Burlington Schools	010372	Pleasant Grove Elementary	Piedmont-Triad	PK-05	D	Not Met
Alamance-Burlington Schools	010374	R Homer Andrews Elementary	Piedmont-Triad	PK-05	D	Met
Alamance-Burlington Schools	010380	South Graham Elementary	Piedmont-Triad	PK-05	D	Met
Alamance-Burlington Schools	010390	Southern Alamance Middle	Piedmont-Triad	06-08	D	Not Met
Alamance-Burlington Schools	010392	Sylvan Elementary	Piedmont-Triad	PK-05	D	Met
Alamance-Burlington Schools	010394	Turrentine Middle	Piedmont-Triad	06-08	D	Not Met
Alamance-Burlington Schools	010406	Woodlawn Middle	Piedmont-Triad	06-08	D	Not Met
Alexander County Schools	020306	East Alexander Middle	Northwest	06-08	D	Not Met
Alexander County Schools	020316	Hiddenite Elementary	Northwest	PK-05	D	Met
Alexander County Schools	020324	Sugar Loaf Elementary	Northwest	0K-05	D	Not Met
Alexander County Schools	020332	Wittenburg Elementary	Northwest	PK-05	D	Met
Alleghany County Schools	030308	Glade Creek Elementary	Northwest	PK-08	D	Met
Alleghany County Schools	030320	Sparta Elementary	Northwest	PK-08	D	Met
Anson County Schools	040306	Anson High School	Southwest	09-12	D	Not Met
Anson County Schools	040309	Anson Middle	Southwest	07-08	F	Not Met
Anson County Schools	040311	Wadesboro Primary	Southwest	0K-03	D	Met
Anson County Schools	040324	Morven Elementary	Southwest	0K-06	D	Met
Anson County Schools	040330	Wadesboro Elementary	Southwest	04-06	F	Met
Asheboro City Schools	761312	Balfour Elementary	Piedmont-Triad	PK-05	D	Not Met
Asheboro City Schools	761320	Charles W McCrary Elementary	Piedmont-Triad	0K-05	D	Not Met
Asheboro City Schools	761321	Donna L Loflin Elementary	Piedmont-Triad	0K-05	D	Met
Asheboro City Schools	761332	Lindley Park Elementary	Piedmont-Triad	0K-05	D	Met
Asheboro City Schools	761336	North Asheboro Middle	Piedmont-Triad	06-08	D	Met
Avery County Schools	060318	Avery Middle	Northwest	06-08	D	Not Met
Beaufort County Schools	070327	John C Tayloe Elementary	Northeast	02-03	D	Met
Beaufort County Schools	070328	John Small Elementary	Northeast	04-05	D	Not Met
Beaufort County Schools	070338	P S Jones Middle	Northeast	06-08	D	Met

District Name	School Code	School Name	State Board Region	Grade Span	School Performance Grade	EVAAS Growth Status
Beaufort County Schools	070340	S W Snowden Elementary	Northeast	PK-08	D	Met
Beaufort County Schools	070342	Washington High	Northeast	09-12	D	Not Met
Bertie County Schools	080314	Bertie Middle	Northeast	06-08	D	Not Met
Bladen County Schools	090315	Bladenboro Middle	Sandhills	05-08	D	Not Met
Bladen County Schools	090318	Bladen Lakes Primary	Sandhills	PK-05	D	Met
Bladen County Schools	090324	Dublin Primary	Sandhills	PK-05	D	Met
Bladen County Schools	090328	East Arcadia Elementary	Sandhills	0K-05	D	Met
Bladen County Schools	090332	Elizabethtown Middle	Sandhills	05-08	F	Not Met
Bladen County Schools	090333	Elizabethtown Primary	Sandhills	PK-04	D	Met
Bladen County Schools	090365	Tar Heel School	Sandhills	PK-08	D	Met
Brunswick County Schools	100304	Bolivia Elementary	Southeast	PK-05	D	Not Met
Brunswick County Schools	100316	Leland Middle	Southeast	06-08	D	Not Met
Brunswick County Schools	100335	South Brunswick Middle	Southeast	06-08	D	Not Met
Brunswick County Schools	100338	Supply Elementary	Southeast	PK-05	D	Not Met
Brunswick County Schools	100342	Virginia Williamson Elem	Southeast	PK-05	D	Not Met
Buncombe County Schools	110338	Owen Middle	Western	06-08	D	Met
Buncombe County Schools	110342	Erwin Middle	Western	07-08	D	Met
Buncombe County Schools	110372	Johnston Elementary	Western	PK-04	F	Met
Buncombe County Schools	110376	Leicester Elementary	Western	PK-04	D	Met
Buncombe County Schools	110384	Oakley Elementary	Western	PK-05	D	Not Met
Buncombe County Schools	110401	Enka Middle	Western	07-08	D	Met
Buncombe County Schools	110412	Williams Elementary	Western	PK-05	D	Met
Buncombe County Schools	110444	Woodfin Elementary	Western	0K-05	F	Not Met
Buncombe County Schools	110451	Eblen Intermediate	Western	05-06	D	Not Met
Burke County Schools	120315	East Burke Middle	Northwest	06-08	D	Not Met
Burke County Schools	120316	Forest Hill Elementary	Northwest	PK-05	D	Met
Burke County Schools	120364	Oak Hill Elementary	Northwest	PK-05	D	Not Met
Burke County Schools	120390	Walter R Johnson Middle	Northwest	06-08	D	Met
Cabarrus County Schools	130313	Concord Middle	Southwest	06-08	F	Not Met
Cabarrus County Schools	130340	Winecoff Elementary	Southwest	PK-05	D	Met
Cabarrus County Schools	130304	A T Allen Elementary	Southwest	0K-05	D	Met
Cabarrus County Schools	130318	C C Griffin Middle	Southwest	06-08	D	Not Met
Cabarrus County Schools	130327	Northwest Cabarrus Middle	Southwest	06-08	D	Met
Cabarrus County Schools	130357	Roberta Road Middle	Southwest	06-08	D	Not Met
Caldwell County Schools	140313	Caldwell Online Academy	Northwest	04-12	D	Not Met
Caldwell County Schools	140324	Gamewell Elementary	Northwest	PK-05	F	Not Met
Caldwell County Schools	140332	Gamewell Middle	Northwest	06-08	D	Met
Caldwell County Schools	140360	Kings Creek Elementary	Northwest	PK-08	D	Met
Caldwell County Schools	140384	Sawmills Elementary	Northwest	PK-05	D	Met
Caldwell County Schools	140388	Valmead Elementary	Northwest	PK-05	D	Met
Caldwell County Schools	140390	West Caldwell High	Northwest	09-12	D	Not Met

District Name	School Code	School Name	State Board Region	Grade Span	School Performance Grade	EVAAS Growth Status
Caswell County Schools	170316	Bartlett Yancey High	Piedmont-Triad	09-12	D	Not Met
Caswell County Schools	170334	North Elementary	Piedmont-Triad	PK-05	D	Not Met
Caswell County Schools	170338	N L Dillard Middle	Piedmont-Triad	06-08	F	Not Met
Caswell County Schools	170342	South Elementary	Piedmont-Triad	PK-05	D	Met
Caswell County Schools	170344	Stoney Creek Elementary	Piedmont-Triad	0K-05	F	Not Met
Catawba County Schools	180360	Oxford Elementary	Northwest	PK-06	D	Not Met
Catawba County Schools	180364	River Bend Middle	Northwest	07-08	D	Met
Catawba County Schools	180372	Saint Stephens Elementary	Northwest	0K-06	D	Met
Catawba County Schools	180388	Webb A Murray Elementary	Northwest	PK-06	D	Met
Charlotte-Mecklenburg Schools	600311	Ashley Park PreK-8 School	Southwest	PK-08	F	Met
Charlotte-Mecklenburg Schools	600398	Greenway Park Elementary	Southwest	PK-05	D	Met
Charlotte-Mecklenburg Schools	600422	Huntingtowne Farms Elementary	Southwest	PK-05	D	Met
Charlotte-Mecklenburg Schools	600517	Reid Park Academy	Southwest	PK-05	D	Met
Charlotte-Mecklenburg Schools	600521	Stoney Creek Elementary	Southwest	0K-05	D	Not Met
Charlotte-Mecklenburg Schools	600300	Albemarle Road Elementary	Southwest	0K-05	D	Met
Charlotte-Mecklenburg Schools	600399	Alexander Graham Middle	Southwest	06-08	D	Not Met
Charlotte-Mecklenburg Schools	600369	Berewick Elementary	Southwest	PK-05	D	Not Met
Charlotte-Mecklenburg Schools	600319	Berryhill School	Southwest	PK-08	D	Met
Charlotte-Mecklenburg Schools	600442	Blythe Elementary	Southwest	PK-05	D	Not Met
Charlotte-Mecklenburg Schools	600329	Briarwood Academy	Southwest	PK-05	D	Not Met
Charlotte-Mecklenburg Schools	600489	Bruns Avenue Elementary	Southwest	PK-05	F	Met
Charlotte-Mecklenburg Schools	600303	Charlotte East Language Academy	Southwest	0K-08	D	Met
Charlotte-Mecklenburg Schools	600341	Cochrane Collegiate Academy	Southwest	06-12	D	Met
Charlotte-Mecklenburg Schools	600352	Crown Point Elementary	Southwest	PK-05	D	Not Met
Charlotte-Mecklenburg Schools	600362	David Cox Road Elementary	Southwest	PK-05	D	Met
Charlotte-Mecklenburg Schools	600365	Devonshire Elementary	Southwest	0K-05	F	Met
Charlotte-Mecklenburg Schools	600597	Elbert Edwin Waddell High School	Southwest	09-10	F	Met
Charlotte-Mecklenburg Schools	600397	Garinger High School	Southwest	09-12	D	Not Met
Charlotte-Mecklenburg Schools	600468	Gov's Village STEM (Lower)	Southwest	PK-04	D	Met
Charlotte-Mecklenburg Schools	600425	Grove Park Elementary School	Southwest	PK-04	D	Met
Charlotte-Mecklenburg Schools	600405	Harding University High School	Southwest	09-12	D	Not Met
Charlotte-Mecklenburg Schools	600412	Hidden Valley Elementary	Southwest	PK-05	F	Not Met
Charlotte-Mecklenburg Schools	600416	Hornets Nest Elementary	Southwest	PK-05	D	Met
Charlotte-Mecklenburg Schools	600478	J. H. Gunn Elementary	Southwest	0K-05	D	Met
Charlotte-Mecklenburg Schools	600305	J. M. Alexander Middle	Southwest	06-08	F	Not Met
Charlotte-Mecklenburg Schools	600428	James Martin Middle	Southwest	06-08	F	Met
Charlotte-Mecklenburg Schools	600432	Joseph W Grier Academy	Southwest	PK-05	D	Met
Charlotte-Mecklenburg Schools	600592	Julius L. Chambers High School	Southwest	09-12	D	Met
Charlotte-Mecklenburg Schools	600444	Long Creek Elementary	Southwest	0K-05	D	Met
Charlotte-Mecklenburg Schools	600366	Marie G Davis School	Southwest	0K-08	F	Met

District Name	School Code	School Name	State Board Region	Grade Span	School Performance Grade	EVAAS Growth Status
Charlotte-Mecklenburg Schools	600448	Martin Luther King, Jr Middle	Southwest	06-08	F	Met
Charlotte-Mecklenburg Schools	600459	Montclair Elementary	Southwest	PK-05	D	Met
Charlotte-Mecklenburg Schools	600462	Mountain Island Lake Academy	Southwest	PK-08	D	Not Met
Charlotte-Mecklenburg Schools	600479	Northeast Middle	Southwest	06-08	D	Met
Charlotte-Mecklenburg Schools	600481	Northridge Middle	Southwest	06-08	D	Met
Charlotte-Mecklenburg Schools	600485	Oakdale Elementary	Southwest	0K-05	D	Met
Charlotte-Mecklenburg Schools	600484	Oakhurst STEAM Academy	Southwest	0K-05	D	Not Met
Charlotte-Mecklenburg Schools	600503	Piney Grove Elementary	Southwest	PK-05	D	Met
Charlotte-Mecklenburg Schools	600512	Rama Road Elementary	Southwest	PK-05	D	Met
Charlotte-Mecklenburg Schools	600514	Ranson Middle	Southwest	06-08	F	Met
Charlotte-Mecklenburg Schools	600516	Reedy Creek Elementary	Southwest	PK-05	D	Not Met
Charlotte-Mecklenburg Schools	600518	Ridge Road Middle	Southwest	06-08	D	Not Met
Charlotte-Mecklenburg Schools	600463	River Oaks Academy	Southwest	PK-05	D	Met
Charlotte-Mecklenburg Schools	600457	Rocky River High School	Southwest	09-12	D	Not Met
Charlotte-Mecklenburg Schools	600520	Sedgefield Middle	Southwest	06-08	D	Not Met
Charlotte-Mecklenburg Schools	600483	South Pine Academy	Southwest	PK-05	F	Not Met
Charlotte-Mecklenburg Schools	600538	Southwest Middle School	Southwest	06-08	F	Not Met
Charlotte-Mecklenburg Schools	600545	Starmount Academy of Excellence	Southwest	PK-05	F	Not Met
Charlotte-Mecklenburg Schools	600553	Thomasboro Academy	Southwest	0K-08	F	Met
Charlotte-Mecklenburg Schools	600566	University Meadows Elementary	Southwest	PK-05	D	Met
Charlotte-Mecklenburg Schools	600574	Walter G. Byers School	Southwest	PK-08	D	Met
Charlotte-Mecklenburg Schools	600579	West Mecklenburg High School	Southwest	09-12	D	Not Met
Charlotte-Mecklenburg Schools	600317	Whitewater Middle	Southwest	06-08	D	Met
Charlotte-Mecklenburg Schools	600583	Wilson STEM Academy	Southwest	06-08	F	Met
Charlotte-Mecklenburg Schools	600586	Winding Springs Elementary	Southwest	PK-05	D	Met
Charter Schools	00A000	North Carolina Cyber Academy	Virtual	0K-12	D	Not Met
Charter Schools	00B000	NC Virtual Academy	Virtual	0K-12	D	Not Met
Charter Schools	01F000	Alamance Community School	Piedmont-Triad	0K-06	D	Met
Charter Schools	13A000	Carolina International School	Southwest	0K-12	D	Not Met
Charter Schools	13B000	Valor Preparatory Academy	Southwest	0K-12	D	Not Met
Charter Schools	13C000	A.C.E. Academy	Southwest	0K-08	D	Met
Charter Schools	14B000	Oak Hill Charter School	Northwest	0K-08	D	Met
Charter Schools	24N000	Classical Charter Schools of Whiteville	Sandhills	0K-08	D	Met
Charter Schools	26C000	The Capitol Encore Academy	Sandhills	0K-12	D	Met
Charter Schools	32H000	Research Triangle Charter	North Central	0K-08	D	Met
Charter Schools	32M000	Global Scholars Academy	North Central	0K-08	D	Met
Charter Schools	32S000	KIPP Durham College Preparatory	North Central	0K-08	F	Not Met
Charter Schools	32T000	Discovery Charter	North Central	06-10	D	Not Met
Charter Schools	34F000	Forsyth Academy	Piedmont-Triad	0K-08	D	Met
Charter Schools	36F000	Ridgeview Charter School	Southwest	0K-08	F	Met

District Name	School Code	School Name	State Board Region	Grade Span	School Performance Grade	EVAAS Growth Status
Charter Schools	41C000	Guilford Preparatory Academy	Piedmont-Triad	0K-08	D	Met
Charter Schools	41D000	Phoenix Academy - Primary, Elem, Upper	Piedmont-Triad	0K-12	D	Not Met
Charter Schools	41H000	College Prep and Leadership Academy	Piedmont-Triad	0K-12	D	Met
Charter Schools	41M000	Next Generation Academy	Piedmont-Triad	0K-07	D	Met
Charter Schools	41N000	The Experiential School of Greensboro	Piedmont-Triad	0K-08	D	Not Met
Charter Schools	42A000	KIPP Halifax College Preparatory	Northeast	0K-08	F	Not Met
Charter Schools	43D000	Achievement Charter Academy	North Central	0K-06	F	Not Met
Charter Schools	49D000	Success Institute Charter	Southwest	0K-08	D	Met
Charter Schools	49G000	Iredell Charter Academy of Arts & Science	Southwest	0K-08	D	Not Met
Charter Schools	51C000	American Leadership Academy - Johnston	North Central	0K-11	D	Not Met
Charter Schools	53C000	Rising Leaders Academy	North Central	0K-08	D	Met
Charter Schools	54A000	Children's Village Academy	Southeast	0K-08	F	Met
Charter Schools	55B000	West Lake Preparatory Academy	Southwest	0K-08	D	Not Met
Charter Schools	60K000	Charlotte Secondary	Southwest	06-12	F	Met
Charter Schools	60N000	American Leadership Academy Charlotte	Southwest	0K-06	F	Met
Charter Schools	61J000	Lakeside Charter Academy	Southwest	0K-08	F	Not Met
Charter Schools	61K000	United Community School	Southwest	0K-08	D	Met
Charter Schools	61P000	VERITAS Community School, CFA	Southwest	0K-08	F	Met
Charter Schools	61Y000	Steele Creek Preparatory Academy	Southwest	0K-08	D	Met
Charter Schools	62A000	Tillery Charter Academy	Sandhills	0K-06	D	Met
Charter Schools	62M000	Bonnie Cone Leadership Academy	Sandhills	0K-11	D	Not Met
Charter Schools	62N000	Aspire Trade High	Sandhills	09-10	F	Not Met
Charter Schools	64A000	Rocky Mount Preparatory	North Central	0K-12	F	Not Met
Charter Schools	65B000	Wilmington Preparatory Academy	Southeast	0K-08	D	Met
Charter Schools	65C000	Classical Charter Schools of Wilmington	Southeast	0K-05	D	Met
Charter Schools	65D000	Island Montessori Charter School	Southeast	0K-08	D	Not Met
Charter Schools	65F000	American Leadership Academy-Coastal	Southeast	0K-10	D	Not Met
Charter Schools	67B000	Z.E.C.A. School of Arts and Technology	Southeast	0K-08	D	Met
Charter Schools	76A000	Uwharrie Charter Academy	Piedmont-Triad	0K-12	D	Not Met
Charter Schools	78A000	CIS Academy	Sandhills	06-08	D	Met
Charter Schools	79C000	Legacy Classical Academy	Piedmont-Triad	0K-04	F	Not Met
Charter Schools	90D000	Monroe Charter Academy	Southwest	0K-06	F	Not Met
Charter Schools	90F000	Apprentice Academy High School	Southwest	07-12	D	Not Met
Charter Schools	92M000	PreEminent Charter	North Central	0K-08	D	Met
Charter Schools	92P000	Southern Wake Academy	North Central	06-12	D	Not Met
Charter Schools	92V000	Wake Forest Charter Academy	North Central	0K-08	D	Not Met

District Name	School Code	School Name	State Board Region	Grade Span	School Performance Grade	EVAAS Growth Status
Charter Schools	93A000	Haliwa-Saponi Tribal School	North Central	0K-12	F	Met
Charter Schools	93P000	Rolesville Charter Academy	North Central	0K-08	D	Not Met
Charter Schools	96C000	Dillard Academy	Southeast	0K-08	F	Not Met
Charter Schools	96F000	Wayne Preparatory Academy	Southeast	0K-12	D	Met
Chatham County Schools	190312	Chatham Middle	North Central	06-08	F	Not Met
Chatham County Schools	190350	Siler City Elementary	North Central	PK-05	D	Met
Cleveland County Schools	230346	James Love Elementary	Southwest	PK-05	D	Not Met
Cleveland County Schools	230368	Township Three Elementary	Southwest	PK-05	D	Met
Cleveland County Schools	230376	Washington Elementary	Southwest	PK-05	F	Not Met
Cleveland County Schools	230316	Burns Middle	Southwest	06-08	D	Not Met
Cleveland County Schools	230328	Crest Middle	Southwest	06-08	D	Not Met
Cleveland County Schools	230336	Elizabeth Elementary	Southwest	PK-05	D	Met
Cleveland County Schools	230340	Fallston Elementary	Southwest	PK-05	D	Not Met
Cleveland County Schools	230352	Kings Mountain Middle	Southwest	07-08	D	Not Met
Cleveland County Schools	230362	Shelby Middle	Southwest	06-08	D	Met
Clinton City Schools	821320	Sampson Middle	Sandhills	06-08	D	Not Met
Columbus County Schools	240308	Acme Delco Elementary	Sandhills	PK-06	D	Not Met
Columbus County Schools	240332	Chadbourn Elementary	Sandhills	0K-05	D	Met
Columbus County Schools	240334	East Columbus Junior-Senior High	Sandhills	07-12	D	Not Met
Columbus County Schools	240354	Hallsboro-Artesia Elementary	Sandhills	PK-06	D	Met
Columbus County Schools	240375	Tabor City School	Sandhills	PK-08	D	Not Met
Columbus County Schools	240380	West Columbus High	Sandhills	09-12	D	Not Met
Columbus County Schools	240381	West Columbus School	Sandhills	PK-08	D	Not Met
Craven County Board of Education	250348	J T Barber Elementary	Southeast	PK-05	D	Met
Craven County Board of Education	250360	Oaks Road Academy	Southeast	PK-05	D	Not Met
Craven County Board of Education	250376	West Craven Middle	Southeast	06-08	D	Met
Craven County Board of Education	250328	Graham A Barden Elementary	Southeast	PK-05	D	Not Met
Craven County Board of Education	250332	H J MacDonald Middle	Southeast	06-08	D	Met
Craven County Board of Education	250336	Havelock Elementary	Southeast	PK-05	D	Not Met
Craven County Board of Education	250344	Havelock Middle	Southeast	06-08	D	Not Met
Cumberland County Schools	260310	Loyd E Auman Elementary	Sandhills	PK-05	D	Met
Cumberland County Schools	260320	Brentwood Elementary	Sandhills	PK-05	D	Met
Cumberland County Schools	260322	Douglas Byrd High	Sandhills	09-12	D	Not Met
Cumberland County Schools	260348	Cumberland Mills Elementary	Sandhills	PK-05	D	Met
Cumberland County Schools	260352	Cumberland Road Elementary	Sandhills	PK-05	D	Not Met
Cumberland County Schools	260361	Ferguson-Easley Elementary	Sandhills	PK-05	D	Met
Cumberland County Schools	260367	Bill Hefner Elementary	Sandhills	PK-05	D	Not Met
Cumberland County Schools	260370	Ed V Baldwin Elementary	Sandhills	PK-05	D	Met
Cumberland County Schools	260405	Walker-Spivey Elementary	Sandhills	0K-05	D	Met

District Name	School Code	School Name	State Board Region	Grade Span	School Performance Grade	EVAAS Growth Status
Cumberland County Schools	260406	Pine Forest Middle	Sandhills	06-08	D	Not Met
Cumberland County Schools	260407	Lake Rim Elementary	Sandhills	PK-05	D	Met
Cumberland County Schools	260450	Warrenwood Elementary	Sandhills	PK-05	D	Met
Cumberland County Schools	260452	Westarea Elementary	Sandhills	PK-05	D	Met
Cumberland County Schools	260454	Westover Middle	Sandhills	06-08	D	Met
Cumberland County Schools	260461	Cumberland Academy K-5 Virtual School	Sandhills	0K-05	D	Met
Currituck County Schools	270304	Central Elementary	Northeast	PK-05	D	Met
Dare County Schools	280312	Manteo Elementary School	Northeast	PK-05	D	Not Met
Dare County Schools	280324	First Flight Elementary School	Northeast	PK-05	D	Not Met
Davidson County Schools	290322	E Lawson Brown Middle	Piedmont-Triad	06-08	D	Not Met
Davidson County Schools	290356	Reeds Elementary	Piedmont-Triad	PK-05	D	Met
Davidson County Schools	290364	Silver Valley Elementary	Piedmont-Triad	PK-05	D	Met
Davidson County Schools	290376	Tyro Middle	Piedmont-Triad	06-08	D	Met
Davidson County Schools	290384	Welcome Elementary	Piedmont-Triad	PK-05	D	Not Met
Davie County Schools	300326	Pinebrook Elementary	Piedmont-Triad	PK-05	D	Not Met
Davie County Schools	300330	South Davie Middle	Piedmont-Triad	06-08	D	Not Met
Duplin County Schools	310308	Beulaville Elementary	Southeast	PK-08	D	Not Met
Duplin County Schools	310336	Warsaw Elementary	Southeast	PK-08	F	Not Met
Duplin County Schools	310356	Kenansville Elementary	Southeast	0K-08	D	Not Met
Duplin County Schools	310384	Rose Hill-Magnolia Elementary	Southeast	PK-08	F	Met
Duplin County Schools	310388	Wallace Elementary	Southeast	PK-08	F	Met
Durham Public Schools	320339	Lakewood Elementary	North Central	PK-05	D	Met
Durham Public Schools	320304	Bethesda Elementary	North Central	PK-05	D	Met
Durham Public Schools	320310	Eastway Elementary	North Central	PK-05	D	Met
Durham Public Schools	320315	Eno Valley Elementary	North Central	PK-05	D	Met
Durham Public Schools	320319	Creekside Elementary	North Central	01-05	D	Not Met
Durham Public Schools	320324	Hillandale Elementary	North Central	PK-05	D	Met
Durham Public Schools	320325	Hillside High	North Central	09-12	D	Not Met
Durham Public Schools	320327	Hope Valley Elementary	North Central	0K-05	D	Met
Durham Public Schools	320328	Holt Elementary	North Central	PK-05	D	Met
Durham Public Schools	320340	Little River K-8 School	North Central	PK-08	D	Met
Durham Public Schools	320343	Lucas Middle	North Central	06-08	D	Met
Durham Public Schools	320344	Fayetteville Street Elementary	North Central	PK-05	D	Met
Durham Public Schools	320346	Lowe's Grove Middle	North Central	06-08	F	Not Met
Durham Public Schools	320355	Neal Middle	North Central	06-08	D	Met
Durham Public Schools	320356	Northern High	North Central	09-12	D	Not Met
Durham Public Schools	320362	Parkwood Elementary	North Central	PK-05	D	Not Met
Durham Public Schools	320368	Southern School of Energy and Sustainability	North Central	09-12	D	Not Met
Durham Public Schools	320376	Spring Valley Elementary	North Central	PK-05	D	Met
Durham Public Schools	320400	Y E Smith Elementary	North Central	PK-05	D	Met



District Name	School Code	School Name	State Board Region	Grade Span	School Performance Grade	EVAAS Growth Status
Durham Public Schools	320401	Ignite Online Academy	North Central	0K-12	D	Met
Edenton-Chowan Schools	210304	Chowan Middle	Northeast	06-08	D	Met
Edenton-Chowan Schools	210306	D F Walker Elementary	Northeast	03-05	D	Met
Edgecombe County Public Schools	330312	Coker-Wimberly Elementary	North Central	PK-05	D	Met
Edgecombe County Public Schools	330328	North Edgecombe High	North Central	09-12	D	Met
Edgecombe County Public Schools	330332	Phillips Middle	North Central	06-08	D	Not Met
Edgecombe County Public Schools	330334	Princeville Elementary	North Central	PK-05	D	Met
Edgecombe County Public Schools	330304	G W Bulluck Elementary	North Central	PK-05	F	Met
Edgecombe County Public Schools	330340	South Edgecombe Middle	North Central	06-08	D	Met
Edgecombe County Public Schools	330344	W A Pattillo Middle	North Central	06-08	F	Not Met
Edgecombe County Public Schools	330348	West Edgecombe Middle	North Central	06-08	D	Met
Edgecombe County Public Schools	330350	SouthWest Edgecombe High	North Central	09-12	D	Not Met
Edgecombe County Public Schools	330358	Tarboro High	North Central	09-12	D	Not Met
Elizabeth City-Pasquotank Public Schools	700322	River Road Middle	Northeast	06-08	D	Met
Elizabeth City-Pasquotank Public Schools	700317	Northeastern High	Northeast	09-12	D	Not Met
Franklin County Schools	350310	Bunn Middle	North Central	06-08	D	Not Met
Franklin County Schools	350312	Cedar Creek Middle	North Central	06-08	D	Not Met
Franklin County Schools	350318	Franklinton Elementary	North Central	PK-05	D	Not Met
Franklin County Schools	350324	Franklinton Middle	North Central	06-08	D	Met
Franklin County Schools	350332	Louisburg Elementary	North Central	PK-05	D	Met
Franklin County Schools	350338	Terrell Lane Middle	North Central	06-08	D	Met
Gaston County Schools	360332	Bessemer City Central Elem	Southwest	03-05	F	Met
Gaston County Schools	360392	Edward D Sadler Jr Elementary School	Southwest	PK-05	F	Met
Gaston County Schools	360408	W P Grier Middle School	Southwest	06-08	F	Not Met
Gaston County Schools	360428	Hunter Huss High	Southwest	09-12	D	Not Met
Gaston County Schools	360438	Lingerfeldt Elementary	Southwest	PK-05	F	Not Met
Gaston County Schools	360480	Pleasant Ridge Elementary	Southwest	PK-05	D	Not Met
Gaston County Schools	360490	Sherwood Elementary	Southwest	PK-05	F	Not Met
Gaston County Schools	360492	H H Beam Elementary	Southwest	PK-05	F	Not Met
Gaston County Schools	360498	Southwest Middle	Southwest	06-08	F	Not Met
Gaston County Schools	360520	Woodhill Elementary	Southwest	PK-05	F	Not Met
Gaston County Schools	360310	Ashbrook High	Southwest	09-12	D	Not Met
Gaston County Schools	360340	Brookside Elementary	Southwest	PK-05	D	Met
Gaston County Schools	360352	Chapel Grove Elementary	Southwest	PK-05	D	Met
Gaston County Schools	360376	Costner Elementary	Southwest	PK-05	D	Not Met
Gaston County Schools	360426	Holbrook Middle	Southwest	06-08	D	Not Met
Gaston County Schools	360432	Kiser Elementary	Southwest	03-05	D	Not Met

District Name	School Code	School Name	State Board Region	Grade Span	School Performance Grade	EVAAS Growth Status
Gaston County Schools	360436	Bessemer City Middle	Southwest	06-08	D	Met
Gaston County Schools	360504	Tryon Elementary	Southwest	PK-05	D	Met
Gaston County Schools	360514	W C Friday Middle School	Southwest	06-08	D	Not Met
Gates County Schools	370304	Buckland Elementary	Northeast	0K-05	D	Not Met
Gates County Schools	370308	Central Middle School	Northeast	06-08	D	Not Met
Gates County Schools	370316	Gatesville Elementary	Northeast	PK-05	D	Not Met
Graham County Schools	380310	Robbinsville Middle	Western	06-08	F	Not Met
Granville County Schools	390309	Butner-Stem Middle	North Central	06-08	D	Met
Granville County Schools	390334	Northern Granville Middle	North Central	06-08	F	Not Met
Granville County Schools	390364	West Oxford Elementary	North Central	PK-05	D	Met
Granville County Schools	390312	C. G. Credle Elementary	North Central	PK-05	D	Met
Granville County Schools	390320	G. C. Hawley Middle	North Central	06-08	D	Not Met
Granville County Schools	390322	Granville Central High	North Central	09-12	D	Met
Granville County Schools	390333	Mount Energy Elementary	North Central	0K-05	D	Met
Granville County Schools	390360	Stovall-Shaw Elementary	North Central	PK-05	D	Met
Greene County Schools	400312	Greene County Middle	Southeast	06-08	F	Not Met
Greene County Schools	400318	Greene County Intermediate	Southeast	04-05	D	Not Met
Greene County Schools	400332	West Greene Elementary	Southeast	02-03	D	Not Met
Guilford County Schools	410544	Ben L. Smith High School	Piedmont-Triad	09-12	D	Not Met
Guilford County Schools	410328	Bessemer Elementary	Piedmont-Triad	PK-05	D	Met
Guilford County Schools	410376	Cyrus P Frazier Elementary	Piedmont-Triad	PK-05	D	Met
Guilford County Schools	410460	Eastern Guilford Middle	Piedmont-Triad	06-08	D	Met
Guilford County Schools	410364	Fairview Elementary	Piedmont-Triad	PK-05	D	Not Met
Guilford County Schools	410385	Gillespie Park Elementary	Piedmont-Triad	PK-05	F	Met
Guilford County Schools	410373	Julius I Foust Elementary	Piedmont-Triad	PK-05	D	Met
Guilford County Schools	410487	Northeast Guilford Middle	Piedmont-Triad	06-08	D	Met
Guilford County Schools	410505	Oak View Elementary	Piedmont-Triad	PK-05	D	Met
Guilford County Schools	410538	Sedgefield Elementary	Piedmont-Triad	PK-05	D	Met
Guilford County Schools	410583	Vandalia Elementary	Piedmont-Triad	PK-05	D	Met
Guilford County Schools	410366	Waldo C Falkener Sr Elementary	Piedmont-Triad	PK-05	F	Met
Guilford County Schools	410592	Welborn Middle	Piedmont-Triad	06-08	D	Met
Guilford County Schools	410310	Allen Jay Elementary	Piedmont-Triad	PK-05	D	Met
Guilford County Schools	410334	Brightwood Elementary	Piedmont-Triad	0K-05	D	Met
Guilford County Schools	410514	Clara J Peck Elementary	Piedmont-Triad	PK-05	D	Met
Guilford County Schools	410358	Eastern Guilford High	Piedmont-Triad	09-12	D	Not Met
Guilford County Schools	410542	George C Simkins Jr Elementary	Piedmont-Triad	PK-05	D	Met
Guilford County Schools	410382	Gibsonville Elementary	Piedmont-Triad	PK-05	D	Not Met
Guilford County Schools	410302	Guilford eLearning University Prep	Piedmont-Triad	0K-08	D	Met
Guilford County Schools	410400	Guilford Elementary	Piedmont-Triad	PK-05	D	Met
Guilford County Schools	410409	Hunter Elementary	Piedmont-Triad	PK-05	D	Met

District Name	School Code	School Name	State Board Region	Grade Span	School Performance Grade	EVAAS Growth Status
Guilford County Schools	410412	Irving Park Elementary	Piedmont-Triad	PK-05	D	Not Met
Guilford County Schools	410436	James Y Joyner Elementary	Piedmont-Triad	PK-05	D	Met
Guilford County Schools	410421	Jamestown Middle	Piedmont-Triad	06-08	D	Met
Guilford County Schools	410427	Johnson Street Global Studies	Piedmont-Triad	PK-08	D	Met
Guilford County Schools	410454	Madison Elementary	Piedmont-Triad	0K-05	D	Met
Guilford County Schools	410461	McLeansville Elementary	Piedmont-Triad	PK-05	D	Met
Guilford County Schools	410463	Mendenhall Middle	Piedmont-Triad	06-08	D	Met
Guilford County Schools	410478	Murphey Traditional Academy	Piedmont-Triad	0K-05	D	Met
Guilford County Schools	410499	Oak Hill Elementary	Piedmont-Triad	PK-05	D	Met
Guilford County Schools	410511	Parkview Village Elementary	Piedmont-Triad	PK-05	F	Not Met
Guilford County Schools	410391	Penn-Griffin Schools	Piedmont-Triad	06-12	D	Not Met
Guilford County Schools	410532	Rankin Elementary	Piedmont-Triad	PK-05	D	Met
Guilford County Schools	410462	Ronald E. McNair Elementary	Piedmont-Triad	PK-05	D	Met
Guilford County Schools	410535	Sedalia Elementary	Piedmont-Triad	PK-05	D	Not Met
Guilford County Schools	410550	Southeast Guilford Middle	Piedmont-Triad	06-08	D	Not Met
Guilford County Schools	410556	Southern Guilford High	Piedmont-Triad	09-12	D	Not Met
Guilford County Schools	410313	Southern Guilford Middle	Piedmont-Triad	06-08	F	Not Met
Guilford County Schools	410565	Southwest Guilford Middle	Piedmont-Triad	06-08	D	Not Met
Guilford County Schools	410577	Sumner Elementary	Piedmont-Triad	0K-05	D	Met
Guilford County Schools	410325	Swann Middle School	Piedmont-Triad	06-08	D	Not Met
Guilford County Schools	410598	Wiley Accel/Enrichment	Piedmont-Triad	PK-05	F	Met
Halifax County Schools	420316	Scotland Neck Elementary Leadership Acad	Northeast	PK-05	D	Not Met
Halifax County Schools	420336	Hollister Elementary Leadership Academy	Northeast	PK-05	F	Met
Halifax County Schools	420346	Northwest Halifax Collegiate and Technic	Northeast	09-12	D	Not Met
Halifax County Schools	420348	Pittman Elementary Leadership Academy	Northeast	PK-05	D	Met
Halifax County Schools	420358	Southeast Halifax Collegiate Prep Academ	Northeast	09-12	D	Met
Halifax County Schools	420376	William R Davie Middle S.T.E.M. Academy	Northeast	06-08	F	Not Met
Halifax County Schools	420340	Inborden Elementary S.T.E.A.M. Academy	Northeast	PK-05	D	Not Met
Harnett County Schools	430308	Angier Elementary	North Central	PK-05	F	Not Met
Harnett County Schools	430316	Boone Trail Elementary	North Central	PK-05	D	Not Met
Harnett County Schools	430328	Coats Elementary	North Central	PK-05	D	Met
Harnett County Schools	430330	Coats-Erwin Middle	North Central	06-08	F	Not Met
Harnett County Schools	430336	Erwin Elementary	North Central	PK-05	D	Met
Harnett County Schools	430344	Dunn Elementary	North Central	PK-05	D	Not Met
Harnett County Schools	430347	Harnett Central Middle	North Central	06-08	D	Not Met
Harnett County Schools	430349	Highland Elementary	North Central	0K-05	D	Not Met
Harnett County Schools	430351	Highland Middle	North Central	06-08	D	Met
Harnett County Schools	430353	LaFayette Elementary	North Central	0K-05	D	Met
Harnett County Schools	430358	Lillington-Shawtown Elementary	North Central	PK-05	D	Not Met

District Name	School Code	School Name	State Board Region	Grade Span	School Performance Grade	EVAAS Growth Status
Harnett County Schools	430370	Overhills Middle	North Central	06-08	D	Met
Harnett County Schools	430376	South Harnett Elementary	North Central	03-05	D	Met
Harnett County Schools	430385	Harnett Virtual Academy	North Central	0K-12	D	Met
Henderson County Schools	450301	Apple Valley Middle	Western	06-08	D	Met
Henderson County Schools	450308	Dana Elementary	Western	PK-05	D	Not Met
Henderson County Schools	450322	Edneyville Elementary	Western	PK-05	D	Not Met
Henderson County Schools	450336	Hillandale Elementary	Western	PK-05	D	Not Met
Hertford County Schools	460312	Bearfield Primary	Northeast	PK-03	F	Met
Hertford County Schools	460320	Hertford County High	Northeast	09-12	D	Not Met
Hertford County Schools	460332	Riverview Elementary	Northeast	PK-05	D	Met
Hickory City Schools	181312	Northview Middle	Northwest	06-08	D	Not Met
Hickory City Schools	181316	Grandview Middle	Northwest	06-08	D	Not Met
Hickory City Schools	181332	Longview Elementary	Northwest	PK-05	D	Not Met
Hickory City Schools	181344	Viewmont Elementary	Northwest	PK-05	D	Met
Hoke County Schools	470316	J W McLauchlin Elementary	Sandhills	0K-05	D	Met
Hoke County Schools	470320	West Hoke Middle	Sandhills	06-08	D	Met
Hoke County Schools	470330	Hawk Eye Elementary	Sandhills	PK-05	F	Not Met
Hoke County Schools	470332	East Hoke Middle	Sandhills	06-08	D	Not Met
Hoke County Schools	470336	West Hoke Elementary	Sandhills	PK-05	D	Not Met
Hyde County Schools	480306	Mattamuskeet School	Northeast	PK-12	D	Met
Iredell-Statesville Schools	490345	N B Mills Elementary	Southwest	PK-05	F	Met
Iredell-Statesville Schools	490352	Third Creek Middle	Southwest	06-08	F	Not Met
Iredell-Statesville Schools	490354	Statesville High	Southwest	09-12	D	Not Met
Iredell-Statesville Schools	490366	Troutman Middle	Southwest	06-08	D	Not Met
Iredell-Statesville Schools	490319	Cloverleaf Elementary	Southwest	PK-05	D	Met
Iredell-Statesville Schools	490326	East Iredell Elementary	Southwest	PK-05	D	Not Met
Iredell-Statesville Schools	490327	East Iredell Middle	Southwest	06-08	F	Not Met
Iredell-Statesville Schools	490333	ISS Virtual Academy	Southwest	0K-12	D	Not Met
Iredell-Statesville Schools	490338	Lakeshore Middle	Southwest	06-08	D	Not Met
Iredell-Statesville Schools	490349	North Iredell Middle	Southwest	06-08	D	Not Met
Iredell-Statesville Schools	490363	Third Creek Elementary	Southwest	PK-05	F	Not Met
Iredell-Statesville Schools	490380	West Iredell High	Southwest	09-12	D	Not Met
Iredell-Statesville Schools	490384	West Iredell Middle	Southwest	06-08	D	Not Met
Jackson County Public Schools	500302	Blue Ridge Early College	Western	07-13	D	Not Met
Jackson County Public Schools	500304	Cullowhee Valley School	Western	PK-08	D	Not Met
Jackson County Public Schools	500332	Scotts Creek School	Western	PK-08	D	Met
Jackson County Public Schools	500337	Smokey Mountain Elementary	Western	PK-08	D	Met
Johnston County Public Schools	510336	East Clayton Elementary	North Central	PK-05	D	Met
Jones County Schools	520328	Maysville Elementary	Southeast	PK-05	D	Met
Jones County Schools	520336	Trenton Elementary	Southeast	PK-05	D	Met
Kannapolis City Schools	132304	A L Brown High	Southwest	09-12	D	Not Met

District Name	School Code	School Name	State Board Region	Grade Span	School Performance Grade	EVAAS Growth Status
Kannapolis City Schools	132312	Fred L Wilson Elementary	Southwest	0K-05	D	Met
Kannapolis City Schools	132314	GW Carver Elementary	Southwest	0K-05	D	Met
Kannapolis City Schools	132330	Kannapolis Middle	Southwest	06-08	F	Not Met
Kannapolis City Schools	132332	Shady Brook Elementary	Southwest	0K-05	F	Met
Kannapolis City Schools	132336	North Kannapolis Elementary	Southwest	PK-05	D	Met
Lab Schools	34Z000	Appalachian Academy at Middle Fork	Piedmont-Triad	0K-05	D	Met
Lab Schools	50Z000	Catamount School	Western	06-08	D	Met
Lab Schools	60Z000	Niner University Elementary	Southwest	0K-05	F	Met
Lab Schools	65Z000	D.C. Virgo Preparatory Academy	Southeast	0K-08	F	Not Met
Lab Schools	86Z000	Appalachian State Univ Academy at Elkin	Piedmont-Triad	02-04	D	Met
Lee County Schools	530308	Broadway Elementary	North Central	PK-05	D	Not Met
Lee County Schools	530314	East Lee Middle	North Central	06-08	D	Met
Lee County Schools	530356	West Lee Middle	North Central	06-08	F	Not Met
Lee County Schools	530360	WB Wicker Elementary	North Central	0K-05	D	Met
Lenoir County Public Schools	540308	Contentnea-Savannah School	Southeast	PK-08	D	Met
Lenoir County Public Schools	540315	Kinston High	Southeast	09-12	D	Not Met
Lenoir County Public Schools	540325	Northeast Elementary	Southeast	PK-05	D	Met
Lenoir County Public Schools	540330	Rochelle Middle	Southeast	06-08	D	Met
Lenoir County Public Schools	540338	Southeast Elementary	Southeast	PK-05	F	Not Met
Lenoir County Public Schools	540340	Southwood Elementary	Southeast	0K-05	D	Not Met
Lexington City Schools	291308	Charles England Elementary School	Piedmont-Triad	01-05	D	Not Met
Lexington City Schools	291332	Lexington Middle School	Piedmont-Triad	06-08	D	Met
Lexington City Schools	291340	Pickett Elementary School	Piedmont-Triad	0K-05	D	Met
Lincoln County Schools	550316	GE Massey Elementary	Southwest	PK-05	D	Not Met
Lincoln County Schools	550334	Lincolnton Middle	Southwest	06-08	D	Met
Lincoln County Schools	550336	Love Memorial Elementary	Southwest	PK-05	D	Not Met
Macon County Schools	560331	Mountain View Intermediate	Western	05-06	D	Not Met
Macon County Schools	560332	Nantahala School	Western	0K-12	D	Met
Martin County Schools	580312	E J Hayes Elementary	Northeast	03-05	D	Met
Martin County Schools	580316	South Creek Elementary	Northeast	PK-05	D	Met
Martin County Schools	580337	South Creek Middle	Northeast	06-08	D	Met
Martin County Schools	580344	South Creek High	Northeast	09-12	D	Not Met
Martin County Schools	580368	Riverside High	Northeast	09-12	D	Not Met
Martin County Schools	580372	Riverside Middle	Northeast	06-08	D	Met
McDowell County Schools	590310	East McDowell Middle School	Northwest	06-08	D	Met
McDowell County Schools	590336	North Cove Elementary School	Northwest	PK-05	D	Met
McDowell County Schools	590356	West McDowell Middle School	Northwest	06-08	D	Not Met
Mitchell County Schools	610320	Gouge Elementary	Northwest	0K-04	D	Not Met
Mitchell County Schools	610326	Harris Middle	Northwest	06-08	D	Not Met
Montgomery County Schools	620312	Candor Elementary	Sandhills	PK-05	D	Met

District Name	School Code	School Name	State Board Region	Grade Span	School Performance Grade	EVAAS Growth Status
Montgomery County Schools	620318	Green Ridge Elementary	Sandhills	PK-05	D	Met
Montgomery County Schools	620324	Mount Gilead Elementary	Sandhills	PK-05	F	Not Met
Montgomery County Schools	620330	Page Street Elementary	Sandhills	03-05	D	Met
Montgomery County Schools	620339	West Middle	Sandhills	06-08	D	Met
Moore County Schools	630308	Aberdeen Elementary	Sandhills	PK-05	F	Not Met
Moore County Schools	630348	Robbins Elementary	Sandhills	PK-05	D	Met
Mooresville Graded School District	491319	Selma Burke Middle	Southwest	06-08	D	Not Met
Mount Airy City Schools	862310	Jones Intermediate	Piedmont-Triad	03-05	D	Not Met
Nash County Public Schools	640306	Baskerville Elementary	North Central	0K-05	F	Not Met
Nash County Public Schools	640326	D S Johnson Elementary	North Central	03-05	F	Not Met
Nash County Public Schools	640335	Rocky Mount Middle	North Central	06-08	F	Met
Nash County Public Schools	640361	Rocky Mount High	North Central	09-12	D	Met
New Hanover County Schools	650312	R Freeman Sch of Engineering	Southeast	PK-05	F	Met
New Hanover County Schools	650316	College Park Elementary	Southeast	0K-05	D	Met
New Hanover County Schools	650324	Edwin A Alderman Elementary	Southeast	0K-05	D	Met
New Hanover County Schools	650328	Forest Hills Global Elementary	Southeast	0K-05	D	Met
New Hanover County Schools	650355	Career Readiness Academy at Mosley PLC	Southeast	PK-12	F	Met
New Hanover County Schools	650404	Wrightsboro Elementary	Southeast	PK-05	D	Not Met
Northampton County Schools	660336	Northampton County High School	Northeast	09-12	D	Met
Onslow County Schools	670304	Bell Fork Elementary	Southeast	0K-05	D	Not Met
Onslow County Schools	670308	Blue Creek Elementary	Southeast	0K-05	D	Not Met
Onslow County Schools	670312	Clyde Erwin Elementary	Southeast	0K-05	D	Met
Onslow County Schools	670323	Jacksonville Commons Elem	Southeast	0K-05	D	Not Met
Onslow County Schools	670325	Jacksonville Commons Middle	Southeast	06-08	D	Not Met
Onslow County Schools	670332	Northwoods Elementary	Southeast	0K-05	D	Met
Onslow County Schools	670336	Northwoods Park Middle	Southeast	06-08	D	Met
Onslow County Schools	670342	Silverdale Elementary	Southeast	0K-05	D	Met
Onslow County Schools	670345	Southwest Middle	Southeast	06-08	D	Not Met
Onslow County Schools	670356	Trexler Middle	Southeast	06-08	D	Not Met
Orange County Schools	680304	A L Stanback Middle	North Central	06-08	D	Not Met
Orange County Schools	680312	Central Elementary	North Central	PK-05	D	Met
Orange County Schools	680324	Efland Cheeks Elementary	North Central	PK-05	D	Met
Pender County Schools	710312	C.F. Pope Elementary	Southeast	PK-05	D	Not Met
Pender County Schools	710316	Burgaw Middle	Southeast	06-08	D	Not Met
Pender County Schools	710324	Malpass Corner Elementary	Southeast	PK-05	D	Not Met
Pender County Schools	710326	Pender High	Southeast	09-12	D	Not Met
Pender County Schools	710328	Penderlea Elementary	Southeast	0K-08	D	Not Met
Pender County Schools	710348	West Pender Middle	Southeast	06-08	D	Met
Person County Schools	730334	North Elementary	North Central	0K-05	F	Met
Person County Schools	730344	Northern Middle	North Central	06-08	D	Not Met

District Name	School Code	School Name	State Board Region	Grade Span	School Performance Grade	EVAAS Growth Status
Pitt County Schools	740324	C M Eppes Middle	Northeast	06-08	D	Not Met
Pitt County Schools	740334	Falkland Elementary	Northeast	PK-05	D	Met
Pitt County Schools	740390	South Greenville Elementary	Northeast	0K-05	D	Met
Pitt County Schools	740302	A G Cox Middle	Northeast	06-08	D	Not Met
Pitt County Schools	740308	Ayden Middle	Northeast	06-08	D	Not Met
Pitt County Schools	740310	Belvoir Elementary	Northeast	PK-05	D	Met
Pitt County Schools	740320	Bethel Elementary	Northeast	PK-08	D	Met
Pitt County Schools	740340	Farmville Middle	Northeast	06-08	D	Met
Pitt County Schools	740376	Pactolus	Northeast	PK-08	D	Met
Pitt County Schools	740400	Wahl Coates Elementary	Northeast	PK-05	D	Met
Public Schools of Robeson County	780320	Deep Branch Elementary	Sandhills	PK-06	D	Met
Public Schools of Robeson County	780325	Fairmont High	Sandhills	09-12	D	Met
Public Schools of Robeson County	780326	Fairmont Middle	Sandhills	05-08	F	Not Met
Public Schools of Robeson County	780328	Fairgrove Elementary School	Sandhills	PK-05	D	Met
Public Schools of Robeson County	780330	L Gilbert Carroll	Sandhills	04-05	F	Not Met
Public Schools of Robeson County	780336	Littlefield Middle	Sandhills	04-08	D	Not Met
Public Schools of Robeson County	780340	Long Branch Elementary	Sandhills	PK-04	D	Met
Public Schools of Robeson County	780341	Lumberton Junior	Sandhills	06-08	F	Met
Public Schools of Robeson County	780352	Orrum Middle	Sandhills	05-08	F	Not Met
Public Schools of Robeson County	780360	Parkton Elementary	Sandhills	PK-08	F	Not Met
Public Schools of Robeson County	780364	Pembroke Elementary	Sandhills	PK-05	D	Met
Public Schools of Robeson County	780368	Pembroke Middle	Sandhills	06-08	F	Not Met
Public Schools of Robeson County	780374	Peterson Elementary	Sandhills	PK-04	D	Met
Public Schools of Robeson County	780376	Piney Grove Elementary	Sandhills	PK-06	F	Not Met
Public Schools of Robeson County	780391	Red Springs High	Sandhills	09-12	D	Met
Public Schools of Robeson County	780392	Rex-Rennert Elementary	Sandhills	PK-05	D	Met
Public Schools of Robeson County	780393	Red Springs Middle	Sandhills	05-08	F	Not Met
Public Schools of Robeson County	780394	Rosenwald Elementary	Sandhills	PK-04	F	Not Met
Public Schools of Robeson County	780398	Rowland Norment Elementary	Sandhills	PK-03	D	Met
Public Schools of Robeson County	780400	Saint Pauls Elementary	Sandhills	PK-04	F	Not Met
Public Schools of Robeson County	780403	Saint Pauls Middle	Sandhills	05-08	F	Not Met
Public Schools of Robeson County	780408	Southside Ashpole Elementary	Sandhills	PK-05	D	Met
Public Schools of Robeson County	780410	Townsend Elementary	Sandhills	PK-05	D	Met
Public Schools of Robeson County	780412	Union Chapel Elementary	Sandhills	PK-06	D	Met

District Name	School Code	School Name	State Board Region	Grade Span	School Performance Grade	EVAAS Growth Status
Public Schools of Robeson County	780417	W H Knuckles	Sandhills	PK-03	D	Not Met
Public Schools of Robeson County	780421	South Robeson Middle School	Sandhills	06-08	F	Met
Randolph County School System	760304	Archdale Elementary School	Piedmont-Triad	0K-05	D	Met
Randolph County School System	760308	Trinity Middle School	Piedmont-Triad	06-08	D	Not Met
Randolph County School System	760316	Coleridge Elementary School	Piedmont-Triad	0K-05	D	Not Met
Randolph County School System	760318	Eastern Randolph High School	Piedmont-Triad	09-12	D	Not Met
Randolph County School System	760332	Liberty Elementary School	Piedmont-Triad	PK-05	D	Met
Randolph County School System	760340	Ramseur Elementary School	Piedmont-Triad	PK-05	D	Not Met
Randolph County School System	760344	Randleman Elementary School	Piedmont-Triad	0K-04	D	Not Met
Randolph County School System	760352	Randleman Middle School	Piedmont-Triad	05-08	D	Not Met
Randolph County School System	760357	Southeastern Randolph Middle School	Piedmont-Triad	06-08	F	Not Met
Randolph County School System	760358	Southwestern Randolph High School	Piedmont-Triad	09-12	D	Not Met
Randolph County School System	760360	Southwestern Randolph Middle School	Piedmont-Triad	06-08	D	Not Met
Randolph County School System	760376	Trinity Elementary School	Piedmont-Triad	0K-05	D	Not Met
Randolph County School System	760378	Wheatmore Middle School	Piedmont-Triad	06-08	D	Not Met
Randolph County School System	760382	Uwharrie Ridge Six-Twelve	Piedmont-Triad	06-12	D	Not Met
Randolph County School System	760385	The Virtual Academy at Randolph	Piedmont-Triad	0K-08	D	Not Met
Richmond County Schools	770310	East Rockingham Elementary	Sandhills	0K-05	D	Met
Richmond County Schools	770346	Monroe Avenue Elementary	Sandhills	PK-05	D	Not Met
Richmond County Schools	770364	Cordova Middle	Sandhills	06-08	D	Not Met
Richmond County Schools	770370	Washington Street Elementary	Sandhills	PK-05	D	Met
Roanoke Rapids City Schools	421304	Belmont Elementary School	Northeast	PK-05	D	Met
Roanoke Rapids City Schools	421306	Chaloner Middle School	Northeast	06-08	D	Met
Rockingham County Schools	790330	J E Holmes Middle	Piedmont-Triad	06-08	D	Not Met
Rockingham County Schools	790350	Monroeton Elementary	Piedmont-Triad	PK-05	D	Not Met
Rockingham County Schools	790358	Moss Street Elementary	Piedmont-Triad	PK-05	F	Not Met
Rockingham County Schools	790366	Reidsville High	Piedmont-Triad	PK-12	D	Not Met
Rockingham County Schools	790374	Reidsville Middle	Piedmont-Triad	06-08	D	Not Met
Rockingham County Schools	790402	Williamsburg Elementary	Piedmont-Triad	PK-05	D	Not Met
Rowan-Salisbury Schools	800314	Erwin Middle	Southwest	06-08	F	Not Met
Rowan-Salisbury Schools	800315	Overton Elementary	Southwest	0K-05	F	Not Met
Rowan-Salisbury Schools	800320	China Grove Middle	Southwest	06-08	D	Not Met
Rowan-Salisbury Schools	800328	Corriher Lipe Middle	Southwest	06-08	F	Not Met
Rowan-Salisbury Schools	800346	Koontz Elementary	Southwest	PK-05	F	Not Met
Rowan-Salisbury Schools	800359	Dole Elementary	Southwest	PK-05	F	Met
Rowan-Salisbury Schools	800360	Hurley Elementary	Southwest	PK-05	F	Not Met
Rowan-Salisbury Schools	800362	Knollwood Elementary	Southwest	PK-05	F	Not Met
Rowan-Salisbury Schools	800368	Morgan Elementary	Southwest	PK-05	D	Not Met
Rowan-Salisbury Schools	800373	North Rowan Elementary	Southwest	PK-05	F	Not Met



District Name	School Code	School Name	State Board Region	Grade Span	School Performance Grade	EVAAS Growth Status
Rowan-Salisbury Schools	800376	North Rowan High	Southwest	09-12	D	Not Met
Rowan-Salisbury Schools	800377	North Rowan Middle	Southwest	06-08	F	Not Met
Rowan-Salisbury Schools	800396	Salisbury High	Southwest	09-12	D	Met
Rowan-Salisbury Schools	800398	Southeast Middle	Southwest	06-08	F	Not Met
Rowan-Salisbury Schools	800400	South Rowan High	Southwest	09-12	D	Not Met
Rowan-Salisbury Schools	800406	West Rowan Elementary	Southwest	PK-05	D	Met
Rowan-Salisbury Schools	800408	West Rowan High	Southwest	09-12	D	Not Met
Rowan-Salisbury Schools	800410	West Rowan Middle	Southwest	06-08	F	Not Met
Rowan-Salisbury Schools	800500	Summit Virtual Academy	Southwest	0K-08	D	Met
Rutherford County Schools	810342	East Rutherford Middle School	Western	06-08	D	Not Met
Rutherford County Schools	810396	Spindale Elementary School	Western	PK-05	D	Met
Sampson County Schools	820347	Hobbtton Middle	Sandhills	06-08	F	Not Met
Sampson County Schools	820370	Union Middle	Sandhills	06-08	D	Met
Sampson County Schools	820372	Roseboro-Salemburg Middle	Sandhills	06-08	F	Not Met
Sampson County Schools	820385	Union Intermediate	Sandhills	03-05	D	Not Met
Scotland County Schools	830304	Carver Middle	Sandhills	06-08	F	Met
Scotland County Schools	830328	Laurel Hill Elementary	Sandhills	PK-05	D	Met
Scotland County Schools	830343	Scotland High School	Sandhills	09-12	D	Not Met
Scotland County Schools	830349	Spring Hill Middle	Sandhills	06-08	D	Met
Scotland County Schools	830360	Wagram Elementary	Sandhills	PK-05	D	Met
Scotland County Schools	830364	Sycamore Lane Elementary	Sandhills	03-05	D	Met
Stanly County Schools	840302	Albemarle High	Southwest	09-12	D	Met
Stanly County Schools	840303	Albemarle Middle	Southwest	06-08	F	Not Met
Stanly County Schools	840316	East Albemarle Elementary	Southwest	0K-05	D	Not Met
Stanly County Schools	840328	North Stanly Middle	Southwest	06-08	D	Not Met
Stanly County Schools	840366	Stanly County Virtual Education	Southwest	02-12	F	Not Met
Stokes County Schools	850320	Lawsonville Elementary School	Piedmont-Triad	0K-05	D	Met
Stokes County Schools	850348	Sandy Ridge Elementary School	Piedmont-Triad	0K-05	D	Met
Stokes County Schools	850350	Southeastern Stokes Middle School	Piedmont-Triad	06-08	D	Not Met
Stokes County Schools	850354	London Elementary School	Piedmont-Triad	0K-05	D	Met
Surry County Schools	860320	Flat Rock Elementary	Piedmont-Triad	PK-05	D	Met
Surry County Schools	860353	Surry Online Magnet School	Piedmont-Triad	0K-12	D	Met
Surry County Schools	860356	Westfield Elementary	Piedmont-Triad	PK-05	D	Met
Swain County Schools	870320	Swain County East Elementary	Western	0K-05	D	Not Met
Thomasville City Schools	292318	Thomasville Primary	Piedmont-Triad	PK-03	F	Not Met
Thomasville City Schools	292320	Thomasville Middle	Piedmont-Triad	06-08	F	Met
Thomasville City Schools	292324	Thomasville High	Piedmont-Triad	09-12	D	Not Met
Tyrrell County Schools	890308	Tyrrell Elementary	Northeast	PK-05	D	Not Met
Union County Public Schools	900304	Benton Heights Elementary	Southwest	PK-05	D	Not Met
Union County Public Schools	900306	East Elementary	Southwest	PK-05	D	Met
Union County Public Schools	900314	Monroe Middle	Southwest	06-08	F	Not Met

District Name	School Code	School Name	State Board Region	Grade Span	School Performance Grade	EVAAS Growth Status
Union County Public Schools	900370	Walter Bickett Elementary	Southwest	PK-05	D	Met
Union County Public Schools	900336	Monroe High	Southwest	09-12	D	Met
Union County Public Schools	900346	Parkwood Middle	Southwest	06-08	D	Not Met
Union County Public Schools	900362	Sun Valley Middle	Southwest	06-08	D	Not Met
Vance County Schools	910370	Vance County High School	North Central	09-12	D	Not Met
Vance County Schools	910308	Carver Elementary	North Central	PK-05	D	Met
Vance County Schools	910311	Clarke Elementary	North Central	PK-05	F	Not Met
Vance County Schools	910314	Dabney Elementary	North Central	PK-05	D	Met
Vance County Schools	910316	Vance County Middle School	North Central	06-08	F	Met
Vance County Schools	910340	New Hope Elementary	North Central	PK-05	D	Met
Vance County Schools	910346	E O Young Jr Elementary	North Central	PK-05	F	Met
Vance County Schools	910356	Pinkston Street Elementary	North Central	PK-05	D	Met
Vance County Schools	910369	Vance Virtual Village Academy	North Central	0K-12	F	Not Met
Vance County Schools	910376	L B Yancey Elementary	North Central	PK-05	D	Met
Vance County Schools	910380	Zeb Vance Elementary	North Central	PK-05	D	Not Met
Wake County Schools	920326	Baileywick Road Elementary	North Central	PK-05	D	Met
Wake County Schools	920352	Bugg Elementary	North Central	PK-05	D	Met
Wake County Schools	920360	Carroll Middle	North Central	06-08	D	Met
Wake County Schools	920370	Centennial Campus Middle	North Central	06-08	D	Not Met
Wake County Schools	920384	Creech Road Elementary	North Central	PK-05	D	Not Met
Wake County Schools	920393	Dillard Drive Elementary	North Central	PK-05	D	Met
Wake County Schools	920398	Durant Road Elementary	North Central	PK-05	D	Met
Wake County Schools	920399	Durant Road Middle	North Central	06-08	D	Met
Wake County Schools	920404	East Garner Middle	North Central	06-08	D	Met
Wake County Schools	920408	East Millbrook Middle	North Central	06-08	F	Not Met
Wake County Schools	920410	Neuse River Middle	North Central	06-08	D	Not Met
Wake County Schools	920415	Fox Road Elementary	North Central	0K-05	D	Met
Wake County Schools	920446	Hodge Road Elementary	North Central	PK-05	D	Met
Wake County Schools	920466	Knightdale High	North Central	09-12	D	Not Met
Wake County Schools	920474	Lake Myra Elementary	North Central	PK-05	D	Not Met
Wake County Schools	920496	Millbrook Elementary	North Central	PK-05	D	Met
Wake County Schools	920512	North Garner Middle	North Central	06-08	D	Not Met
Wake County Schools	920547	Rogers Lane Elementary	North Central	PK-05	F	Not Met
Wake County Schools	920549	River Bend Middle	North Central	06-08	D	Not Met
Wake County Schools	920563	Southeast Raleigh Elementary	North Central	PK-05	F	Met
Wake County Schools	920570	Timber Drive Elementary	North Central	PK-05	D	Not Met
Wake County Schools	920599	Walnut Creek Elementary	North Central	PK-05	D	Met
Wake County Schools	920600	Wendell Elementary	North Central	0K-05	D	Met
Wake County Schools	920601	Wendell Middle	North Central	06-08	D	Met
Wake County Schools	920616	Wilburn Elementary	North Central	PK-05	F	Not Met
Wake County Schools	920632	Zebulon Elementary	North Central	PK-05	D	Met

District Name	School Code	School Name	State Board Region	Grade Span	School Performance Grade	EVAAS Growth Status
Wake County Schools	920336	Brentwood Elementary	North Central	PK-05	D	Met
Wake County Schools	920342	Brier Creek Elementary	North Central	PK-05	D	Met
Wake County Schools	920592	Wake Forest Middle School	North Central	06-08	D	Not Met
Wake County Schools	920618	Wildwood Forest Elementary	North Central	PK-05	D	Met
Wake County Schools	920636	Zebulon Middle	North Central	06-08	D	Met
Warren County Schools	930330	Mariam Boyd Elementary	North Central	PK-05	F	Not Met
Warren County Schools	930340	Northside Elementary	North Central	PK-05	F	Not Met
Warren County Schools	930352	Warren County High	North Central	09-12	D	Met
Warren County Schools	930354	Warren County Middle	North Central	06-08	F	Not Met
Warren County Schools	930348	Vaughan Elementary	North Central	PK-05	D	Not Met
Washington County Schools	940316	Washington County High	Northeast	09-12	D	Not Met
Washington County Schools	940306	Creswell Elementary	Northeast	PK-05	D	Met
Washington County Schools	940328	Washington County Middle	Northeast	06-08	D	Met
Watauga County Schools	950308	Bethel Elementary	Northwest	PK-08	D	Not Met
Watauga County Schools	950320	Green Valley Elementary	Northwest	PK-08	D	Not Met
Wayne County Public Schools	960318	Carver Heights Elementary	Southeast	03-05	F	Not Met
Wayne County Public Schools	960335	Goldsboro High	Southeast	09-12	D	Not Met
Wayne County Public Schools	960314	Brogden Primary	Southeast	PK-04	D	Met
Wayne County Public Schools	960326	Dillard Middle	Southeast	06-08	F	Met
Wayne County Public Schools	960329	Eastern Wayne Elementary	Southeast	PK-05	D	Met
Wayne County Public Schools	960331	Eastern Wayne Middle	Southeast	06-08	F	Not Met
Wayne County Public Schools	960338	Grantham Middle	Southeast	05-08	D	Not Met
Wayne County Public Schools	960380	Southern Wayne High	Southeast	09-12	D	Not Met
Wayne County Public Schools	960388	Tommy's Road Elementary	Southeast	PK-05	D	Met
Wayne County Public Schools	960450	Northeast Elementary	Southeast	PK-05	D	Not Met
Weldon City Schools	422314	Weldon Elementary Global Academy	Northeast	PK-05	F	Not Met
Weldon City Schools	422318	Weldon Middle	Northeast	06-08	D	Met
Wilkes County Schools	970308	Boomer-Ferguson Elementary School	Northwest	PK-05	D	Met
Wilkes County Schools	970312	C C Wright Elementary School	Northwest	PK-05	D	Met
Wilkes County Schools	970348	Mountain View Elementary School	Northwest	PK-05	D	Not Met
Wilkes County Schools	970376	Traphill Elementary School	Northwest	0K-05	D	Met
Wilkes County Schools	970389	West Wilkes Middle School	Northwest	06-08	D	Not Met
Wilson County Schools	980308	B O Barnes Elementary	North Central	0K-05	D	Not Met
Wilson County Schools	980356	Margaret Hearne Elementary	North Central	PK-05	D	Met
Wilson County Schools	980317	Charles H Darden Middle	North Central	06-08	F	Not Met
Wilson County Schools	980357	Vick Elementary	North Central	0K-05	D	Met
Winston Salem / Forsyth County Schools	340308	Ashley Academy	Piedmont-Triad	PK-05	F	Not Met
Winston Salem / Forsyth County Schools	340376	Forest Park Elementary	Piedmont-Triad	PK-05	D	Met
Winston Salem / Forsyth County Schools	340390	Hall-Woodward Elementary	Piedmont-Triad	PK-05	D	Met

District Name	School Code	School Name	State Board Region	Grade Span	School Performance Grade	EVAAS Growth Status
Winston Salem / Forsyth County Schools	340424	Kimberley Park Elementary	Piedmont-Triad	PK-05	D	Met
Winston Salem / Forsyth County Schools	340452	Mineral Springs Middle	Piedmont-Triad	06-08	F	Not Met
Winston Salem / Forsyth County Schools	340492	Philo-Hill Magnet Academy	Piedmont-Triad	06-08	F	Not Met
Winston Salem / Forsyth County Schools	340314	Bolton Elementary	Piedmont-Triad	PK-05	D	Met
Winston Salem / Forsyth County Schools	340330	Carver High	Piedmont-Triad	09-12	D	Met
Winston Salem / Forsyth County Schools	340366	East Forsyth Middle School	Piedmont-Triad	06-08	F	Not Met
Winston Salem / Forsyth County Schools	340368	Easton Elementary School	Piedmont-Triad	PK-05	F	Not Met
Winston Salem / Forsyth County Schools	340372	Flat Rock Middle	Piedmont-Triad	06-08	F	Not Met
Winston Salem / Forsyth County Schools	340380	Gibson Elementary	Piedmont-Triad	PK-05	F	Met
Winston Salem / Forsyth County Schools	340382	Robert B Glenn High School	Piedmont-Triad	09-12	D	Not Met
Winston Salem / Forsyth County Schools	340398	Virtual Academy	Piedmont-Triad	PK-12	D	Met
Winston Salem / Forsyth County Schools	340400	Ibraham Elementary	Piedmont-Triad	PK-05	F	Not Met
Winston Salem / Forsyth County Schools	340426	Kimmel Farm Elementary	Piedmont-Triad	PK-05	D	Met
Winston Salem / Forsyth County Schools	340460	North Forsyth High	Piedmont-Triad	09-12	D	Not Met
Winston Salem / Forsyth County Schools	340462	North Hills Elementary	Piedmont-Triad	PK-05	F	Not Met
Winston Salem / Forsyth County Schools	340464	Northwest Middle	Piedmont-Triad	06-08	F	Not Met
Winston Salem / Forsyth County Schools	340476	Old Town Elementary	Piedmont-Triad	PK-05	F	Not Met
Winston Salem / Forsyth County Schools	340480	Paisley IB Magnet School	Piedmont-Triad	06-10	F	Not Met
Winston Salem / Forsyth County Schools	340486	Parkland High	Piedmont-Triad	09-12	D	Met
Winston Salem / Forsyth County Schools	340488	J F Kennedy High	Piedmont-Triad	06-12	D	Met
Winston Salem / Forsyth County Schools	340490	Petree Elementary	Piedmont-Triad	PK-05	F	Met
Winston Salem / Forsyth County Schools	340514	Smith Farm Elementary	Piedmont-Triad	PK-05	D	Met
Winston Salem / Forsyth County Schools	340516	Southeast Middle	Piedmont-Triad	06-08	F	Not Met
Winston Salem / Forsyth County Schools	340520	South Fork Elementary	Piedmont-Triad	PK-05	D	Not Met
Winston Salem / Forsyth County Schools	340542	Walkertown High	Piedmont-Triad	09-12	D	Not Met
Winston Salem / Forsyth County Schools	340544	Walkertown Middle	Piedmont-Triad	06-08	D	Not Met
Winston Salem / Forsyth County Schools	340548	Ward Elementary	Piedmont-Triad	PK-05	D	Met
Winston Salem / Forsyth County Schools	340564	Wiley Magnet Middle	Piedmont-Triad	06-08	F	Not Met
Winston Salem / Forsyth County Schools	340568	Winston-Salem Preparatory Acad	Piedmont-Triad	06-12	F	Met
Yadkin County Schools	990325	Starmount Middle	Piedmont-Triad	06-09	D	Not Met
Yadkin County Schools	990328	West Yadkin Elementary	Piedmont-Triad	PK-05	D	Not Met
Yadkin County Schools	990336	Yadkinville Elementary	Piedmont-Triad	PK-08	D	Not Met
Yancey County Schools	995312	Burnsville Elementary	Northwest	PK-05	D	Not Met

### 2023–24 Low-Performing Districts

Low-performing districts are defined as districts that had greater than 50% of schools identified as low-performing. For the 2023-24 designations, there are 23 low-performing districts.

District Code	District Name	Number of Low-Performing Schools	Number of Schools with a School Performance Grade and Growth	Percent of Low-Performing Schools in District
930	Warren County Schools	5	6	83.3
170	Caswell County Schools	5	6	83.3
291	Lexington City Schools	3	5	60.0
940	Washington County Schools	3	4	75.0
830	Scotland County Schools	6	8	75.0
580	Martin County Schools	6	8	75.0
292	Thomasville City Schools	3	4	75.0
132	Kannapolis City Schools	6	8	75.0
910	Vance County Schools	11	15	73.3
780	Public Schools of Robeson County	26	36	72.2
330	Edgecombe County Public Schools	10	15	66.7
210	Edenton-Chowan Schools	2	3	66.7
420	Halifax County Schools	7	11	63.6
090	Bladen County Schools	7	11	63.6
761	Asheboro City Schools	5	8	62.5
800	Rowan-Salisbury Schools	19	31	61.3
400	Greene County Schools	3	5	60.0
370	Gates County Schools	3	5	60.0
240	Columbus County Schools	7	12	58.3
620	Montgomery County Schools	5	9	55.6
040	Anson County Schools	5	9	55.6
430	Harnett County Schools	14	26	53.8
390	Granville County Schools	8	15	53.3

### 2023–24 Continually Low-Performing Schools List

A continually low-performing school is identified as low-performing in any two of the last three years. The years used for this list are the 2021–22, 2022–23, and 2023–24 school years. A low-performing school has a school performance grade of 'D' or 'F', and a growth status of 'Met' or 'Not Met'. This list contains schools identified as continually low-performing that are within a local school administrative unit (district). Charter schools identified as continually low-performing schools are listed separately on a subsequent list.

District Name	School Code	School Name	State Board Region	Low Performing 2023–24	Low Performing 2022–23	Low Performing 2021–22
Alamance-Burlington Schools	010310	Broadview Middle	Piedmont-Triad		Y	Y
Alamance-Burlington Schools	010326	Eastlawn Elementary	Piedmont-Triad	Y	Y	
Alamance-Burlington Schools	010346	B. Everett Jordan Elementary	Piedmont-Triad	Y	Y	Y
Alamance-Burlington Schools	010350	Graham Middle	Piedmont-Triad	Y	Y	Y
Alamance-Burlington Schools	010351	Grove Park Elementary	Piedmont-Triad		Y	Y
Alamance-Burlington Schools	010354	Harvey R Newlin Elementary	Piedmont-Triad	Y	Y	Y
Alamance-Burlington Schools	010357	Haw River Elementary	Piedmont-Triad	Y	Y	Y
Alamance-Burlington Schools	010358	Hillcrest Elementary	Piedmont-Triad	Y	Y	Y
Alamance-Burlington Schools	010360	Hugh M Cummings High	Piedmont-Triad	Y	Y	Y
Alamance-Burlington Schools	010364	North Graham Elementary	Piedmont-Triad	Y	Y	Y
Alamance-Burlington Schools	010372	Pleasant Grove Elementary	Piedmont-Triad	Y	Y	
Alamance-Burlington Schools	010374	R Homer Andrews Elementary	Piedmont-Triad	Y	Y	
Alamance-Burlington Schools	010380	South Graham Elementary	Piedmont-Triad	Y	Y	Y
Alamance-Burlington Schools	010392	Sylvan Elementary	Piedmont-Triad	Y	Y	
Alamance-Burlington Schools	010394	Turrentine Middle	Piedmont-Triad	Y	Y	Y
Alamance-Burlington Schools	010450	Alamance Virtual School	Piedmont-Triad		Y	Y
Alexander County Schools	020306	East Alexander Middle	Northwest	Y	Y	Y
Alexander County Schools	020316	Hiddenite Elementary	Northwest	Y	Y	Y
Alexander County Schools	020332	Wittenburg Elementary	Northwest	Y		Y
Alleghany County Schools	030320	Sparta Elementary	Northwest	Y	Y	Y
Anson County Schools	040306	Anson High School	Southwest	Y	Y	Y
Anson County Schools	040309	Anson Middle	Southwest	Y	Y	Y
Anson County Schools	040311	Wadesboro Primary	Southwest	Y	Y	Y
Anson County Schools	040316	Lilesville Elementary	Southwest		Y	Y
Anson County Schools	040324	Morven Elementary	Southwest	Y	Y	Y
Anson County Schools	040330	Wadesboro Elementary	Southwest	Y	Y	Y
Asheboro City Schools	761312	Balfour Elementary	Piedmont-Triad	Y	Y	Y
Asheboro City Schools	761320	Charles W McCrary Elementary	Piedmont-Triad	Y		Y
Asheboro City Schools	761321	Donna L Loflin Elementary	Piedmont-Triad	Y	Y	
Asheboro City Schools	761332	Lindley Park Elementary	Piedmont-Triad	Y	Y	Y
Asheboro City Schools	761336	North Asheboro Middle	Piedmont-Triad	Y	Y	Y
Asheville City Schools	111304	Hall Fletcher Elementary	Western		Y	Y
Avery County Schools	060318	Avery Middle	Northwest	Y	Y	Y
Avery County Schools	060328	Newland Elementary	Northwest		Y	Y
Beaufort County Schools	070325	Chocowinity Middle	Northeast		Y	Y

District Name	School Code	School Name	State Board Region	Low Performing 2023–24	Low Performing 2022–23	Low Performing 2021–22
Beaufort County Schools	070327	John C Tayloe Elementary	Northeast	Y	Y	Y
Beaufort County Schools	070328	John Small Elementary	Northeast	Y	Y	Y
Beaufort County Schools	070329	Northeast Elementary	Northeast		Y	Y
Beaufort County Schools	070338	P S Jones Middle	Northeast	Y	Y	Y
Beaufort County Schools	070340	S W Snowden Elementary	Northeast	Y	Y	Y
Beaufort County Schools	070342	Washington High	Northeast	Y	Y	Y
Bertie County Schools	080312	Bertie High	Northeast		Y	Y
Bertie County Schools	080314	Bertie Middle	Northeast	Y	Y	Y
Bladen County Schools	090318	Bladen Lakes Primary	Sandhills	Y	Y	Y
Bladen County Schools	090324	Dublin Primary	Sandhills	Y		Y
Bladen County Schools	090332	Elizabethtown Middle	Sandhills	Y	Y	Y
Bladen County Schools	090333	Elizabethtown Primary	Sandhills	Y	Y	Y
Bladen County Schools	090365	Tar Heel School	Sandhills	Y	Y	Y
Brunswick County Schools	100304	Bolivia Elementary	Southeast	Y	Y	Y
Brunswick County Schools	100316	Leland Middle	Southeast	Y	Y	Y
Brunswick County Schools	100332	Shallotte Middle	Southeast		Y	Y
Brunswick County Schools	100338	Supply Elementary	Southeast	Y	Y	
Brunswick County Schools	100341	Town Creek Middle	Southeast		Y	Y
Buncombe County Schools	110338	Owen Middle	Western	Y	Y	Y
Buncombe County Schools	110342	Erwin Middle	Western	Y	Y	Y
Buncombe County Schools	110348	Emma Elementary	Western		Y	Y
Buncombe County Schools	110372	Johnston Elementary	Western	Y	Y	Y
Buncombe County Schools	110376	Leicester Elementary	Western	Y		Y
Buncombe County Schools	110384	Oakley Elementary	Western	Y	Y	Y
Buncombe County Schools	110401	Enka Middle	Western	Y	Y	Y
Buncombe County Schools	110412	Williams Elementary	Western	Y	Y	Y
Buncombe County Schools	110444	Woodfin Elementary	Western	Y	Y	Y
Buncombe County Schools	110451	Eblen Intermediate	Western	Y	Y	Y
Burke County Schools	120316	Forest Hill Elementary	Northwest	Y	Y	Y
Burke County Schools	120364	Oak Hill Elementary	Northwest	Y	Y	
Burke County Schools	120390	Walter R Johnson Middle	Northwest	Y	Y	Y
Cabarrus County Schools	130313	Concord Middle	Southwest	Y	Y	Y
Cabarrus County Schools	130318	C C Griffin Middle	Southwest	Y		Y
Cabarrus County Schools	130329	Rocky River Elementary	Southwest		Y	Y
Cabarrus County Schools	130340	Winecoff Elementary	Southwest	Y		Y
Cabarrus County Schools	130342	W M Irvin Elementary	Southwest		Y	Y
Cabarrus County Schools	130357	Roberta Road Middle	Southwest	Y	Y	
Caldwell County Schools	140324	Gamewell Elementary	Northwest	Y	Y	Y
Caldwell County Schools	140332	Gamewell Middle	Northwest	Y	Y	Y
Caldwell County Schools	140344	Happy Valley Elementary	Northwest		Y	Y
Caldwell County Schools	140360	Kings Creek Elementary	Northwest	Y	Y	Y

District Name	School Code	School Name	State Board Region	Low Performing 2023–24	Low Performing 2022–23	Low Performing 2021–22
Caldwell County Schools	140368	William Lenoir Middle	Northwest		Y	Y
Caldwell County Schools	140384	Sawmills Elementary	Northwest	Y	Y	Y
Caldwell County Schools	140388	Valmead Elementary	Northwest	Y	Y	
Caldwell County Schools	140390	West Caldwell High	Northwest	Y		Y
Caldwell County Schools	140396	Whitnel Elementary	Northwest		Y	Y
Caswell County Schools	170316	Bartlett Yancey High	Piedmont-Triad	Y	Y	Y
Caswell County Schools	170334	North Elementary	Piedmont-Triad	Y	Y	
Caswell County Schools	170338	N L Dillard Middle	Piedmont-Triad	Y		Y
Caswell County Schools	170339	Oakwood Elementary	Piedmont-Triad		Y	Y
Caswell County Schools	170342	South Elementary	Piedmont-Triad	Y	Y	Y
Caswell County Schools	170344	Stoney Creek Elementary	Piedmont-Triad	Y	Y	
Catawba County Schools	180343	Lyle Creek Elementary	Northwest		Y	Y
Catawba County Schools	180360	Oxford Elementary	Northwest	Y		Y
Catawba County Schools	180364	River Bend Middle	Northwest	Y	Y	Y
Catawba County Schools	180372	Saint Stephens Elementary	Northwest	Y	Y	Y
Catawba County Schools	180388	Webb A Murray Elementary	Northwest	Y		Y
Charlotte-Mecklenburg Schools	600300	Albemarle Road Elementary	Southwest	Y	Y	
Charlotte-Mecklenburg Schools	600301	Albemarle Road Middle	Southwest		Y	Y
Charlotte-Mecklenburg Schools	600399	Alexander Graham Middle	Southwest	Y	Y	
Charlotte-Mecklenburg Schools	600311	Ashley Park PreK-8 School	Southwest	Y	Y	Y
Charlotte-Mecklenburg Schools	600369	Berewick Elementary	Southwest	Y	Y	
Charlotte-Mecklenburg Schools	600319	Berryhill School	Southwest	Y	Y	
Charlotte-Mecklenburg Schools	600489	Bruns Avenue Elementary	Southwest	Y	Y	
Charlotte-Mecklenburg Schools	600303	Charlotte East Language Academy	Southwest	Y	Y	Y
Charlotte-Mecklenburg Schools	600341	Cochrane Collegiate Academy	Southwest	Y	Y	Y
Charlotte-Mecklenburg Schools	600362	David Cox Road Elementary	Southwest	Y	Y	Y
Charlotte-Mecklenburg Schools	600365	Devonshire Elementary	Southwest	Y	Y	
Charlotte-Mecklenburg Schools	600374	Druid Hills Academy	Southwest		Y	Y
Charlotte-Mecklenburg Schools	600397	Garinger High School	Southwest	Y	Y	Y
Charlotte-Mecklenburg Schools	600468	Gov's Village STEM (Lower)	Southwest	Y	Y	
Charlotte-Mecklenburg Schools	600398	Greenway Park Elementary	Southwest	Y	Y	
Charlotte-Mecklenburg Schools	600405	Harding University High School	Southwest	Y	Y	Y
Charlotte-Mecklenburg Schools	600410	Hickory Grove Elementary	Southwest		Y	Y
Charlotte-Mecklenburg Schools	600416	Hornets Nest Elementary	Southwest	Y	Y	Y
Charlotte-Mecklenburg Schools	600422	Huntingtowne Farms Elementary	Southwest	Y	Y	Y
Charlotte-Mecklenburg Schools	600478	J. H. Gunn Elementary	Southwest	Y	Y	



District Name	School Code	School Name	State Board Region	Low Performing 2023–24	Low Performing 2022–23	Low Performing 2021–22
Charlotte-Mecklenburg Schools	600305	J. M. Alexander Middle	Southwest	Y	Y	Y
Charlotte-Mecklenburg Schools	600428	James Martin Middle	Southwest	Y	Y	Y
Charlotte-Mecklenburg Schools	600432	Joseph W Grier Academy	Southwest	Y		Y
Charlotte-Mecklenburg Schools	600592	Julius L. Chambers High School	Southwest	Y	Y	Y
Charlotte-Mecklenburg Schools	600434	Kennedy Middle	Southwest		Y	Y
Charlotte-Mecklenburg Schools	600440	Lebanon Road Elementary	Southwest		Y	Y
Charlotte-Mecklenburg Schools	600446	Mallard Creek Elementary	Southwest		Y	Y
Charlotte-Mecklenburg Schools	600366	Marie G Davis School	Southwest	Y	Y	Y
Charlotte-Mecklenburg Schools	600448	Martin Luther King, Jr Middle	Southwest	Y	Y	Y
Charlotte-Mecklenburg Schools	600450	McClintock Middle	Southwest		Y	Y
Charlotte-Mecklenburg Schools	600459	Montclair Elementary	Southwest	Y		Y
Charlotte-Mecklenburg Schools	600462	Mountain Island Lake Academy	Southwest	Y	Y	Y
Charlotte-Mecklenburg Schools	600479	Northeast Middle	Southwest	Y	Y	Y
Charlotte-Mecklenburg Schools	600481	Northridge Middle	Southwest	Y	Y	
Charlotte-Mecklenburg Schools	600485	Oakdale Elementary	Southwest	Y	Y	Y
Charlotte-Mecklenburg Schools	600501	Pinewood Elementary	Southwest		Y	Y
Charlotte-Mecklenburg Schools	600503	Piney Grove Elementary	Southwest	Y		Y
Charlotte-Mecklenburg Schools	600514	Ranson Middle	Southwest	Y	Y	Y
Charlotte-Mecklenburg Schools	600517	Reid Park Academy	Southwest	Y	Y	Y
Charlotte-Mecklenburg Schools	600518	Ridge Road Middle	Southwest	Y	Y	Y
Charlotte-Mecklenburg Schools	600463	River Oaks Academy	Southwest	Y	Y	Y
Charlotte-Mecklenburg Schools	600457	Rocky River High School	Southwest	Y		Y
Charlotte-Mecklenburg Schools	600520	Sedgefield Middle	Southwest	Y		Y
Charlotte-Mecklenburg Schools	600483	South Pine Academy	Southwest	Y	Y	
Charlotte-Mecklenburg Schools	600538	Southwest Middle School	Southwest	Y	Y	Y
Charlotte-Mecklenburg Schools	600545	Starmount Academy of Excellence	Southwest	Y		Y
Charlotte-Mecklenburg Schools	600546	Statesville Road Elementary	Southwest		Y	Y
Charlotte-Mecklenburg Schools	600521	Stoney Creek Elementary	Southwest	Y	Y	
Charlotte-Mecklenburg Schools	600553	Thomasboro Academy	Southwest	Y	Y	
Charlotte-Mecklenburg Schools	600566	University Meadows Elementary	Southwest	Y	Y	
Charlotte-Mecklenburg Schools	600565	University Park Creative Arts	Southwest		Y	Y
Charlotte-Mecklenburg Schools	600574	Walter G. Byers School	Southwest	Y	Y	

District Name	School Code	School Name	State Board Region	Low Performing 2023–24	Low Performing 2022–23	Low Performing 2021–22
Charlotte-Mecklenburg Schools	600579	West Mecklenburg High School	Southwest	Y	Y	Y
Charlotte-Mecklenburg Schools	600317	Whitewater Middle	Southwest	Y	Y	
Charlotte-Mecklenburg Schools	600583	Wilson STEM Academy	Southwest	Y	Y	
Charlotte-Mecklenburg Schools	600586	Winding Springs Elementary	Southwest	Y		Y
Chatham County Schools	190312	Chatham Middle	North Central	Y	Y	Y
Chatham County Schools	190350	Siler City Elementary	North Central	Y	Y	Y
Cherokee County Schools	200304	Andrews Elementary	Western		Y	Y
Cleveland County Schools	230336	Elizabeth Elementary	Southwest	Y	Y	Y
Cleveland County Schools	230362	Shelby Middle	Southwest	Y	Y	Y
Cleveland County Schools	230368	Township Three Elementary	Southwest	Y	Y	Y
Cleveland County Schools	230376	Washington Elementary	Southwest	Y	Y	Y
Clinton City Schools	821320	Sampson Middle	Sandhills	Y	Y	
Columbus County Schools	240308	Acme Delco Elementary	Sandhills	Y	Y	Y
Columbus County Schools	240332	Chadbourn Elementary	Sandhills	Y	Y	Y
Columbus County Schools	240334	East Columbus Junior-Senior High	Sandhills	Y	Y	Y
Columbus County Schools	240354	Hallsboro-Artesia Elementary	Sandhills	Y	Y	Y
Columbus County Schools	240380	West Columbus High	Sandhills	Y	Y	
Columbus County Schools	240381	West Columbus School	Sandhills	Y	Y	
Craven County Board of Education	250332	H J MacDonald Middle	Southeast	Y	Y	
Craven County Board of Education	250336	Havelock Elementary	Southeast	Y	Y	
Craven County Board of Education	250344	Havelock Middle	Southeast	Y	Y	Y
Craven County Board of Education	250348	J T Barber Elementary	Southeast	Y	Y	Y
Craven County Board of Education	250360	Oaks Road Academy	Southeast	Y	Y	Y
Craven County Board of Education	250376	West Craven Middle	Southeast	Y		Y
Cumberland County Schools	260310	Loyd E Auman Elementary	Sandhills	Y	Y	
Cumberland County Schools	260320	Brentwood Elementary	Sandhills	Y	Y	
Cumberland County Schools	260322	Douglas Byrd High	Sandhills	Y	Y	Y
Cumberland County Schools	260326	Elizabeth M Cashwell Elementary	Sandhills		Y	Y
Cumberland County Schools	260340	College Lakes Elementary	Sandhills		Y	Y
Cumberland County Schools	260348	Cumberland Mills Elementary	Sandhills	Y	Y	
Cumberland County Schools	260358	Luther Nick Jeralds Middle	Sandhills		Y	Y
Cumberland County Schools	260361	Ferguson-Easley Elementary	Sandhills	Y	Y	
Cumberland County Schools	260367	Bill Hefner Elementary	Sandhills	Y	Y	
Cumberland County Schools	260370	Ed V Baldwin Elementary	Sandhills	Y	Y	
Cumberland County Schools	260386	Margaret Willis Elementary	Sandhills		Y	Y
Cumberland County Schools	260400	Montclair Elementary	Sandhills		Y	Y
Cumberland County Schools	260404	William H Owen Elementary	Sandhills		Y	Y
Cumberland County Schools	260425	South View Middle	Sandhills		Y	Y

District Name	School Code	School Name	State Board Region	Low Performing 2023–24	Low Performing 2022–23	Low Performing 2021–22
Cumberland County Schools	260440	Sunnyside Elementary	Sandhills		Y	Y
Cumberland County Schools	260450	Warrenwood Elementary	Sandhills	Y	Y	
Cumberland County Schools	260452	Westarea Elementary	Sandhills	Y	Y	
Cumberland County Schools	260461	Cumberland Academy K-5 Virtual School	Sandhills	Y	Y	Y
Currituck County Schools	270304	Central Elementary	Northeast	Y	Y	Y
Dare County Schools	280312	Manteo Elementary School	Northeast	Y		Y
Davidson County Schools	290322	E Lawson Brown Middle	Piedmont-Triad	Y	Y	Y
Davidson County Schools	290356	Reeds Elementary	Piedmont-Triad	Y	Y	
Davidson County Schools	290364	Silver Valley Elementary	Piedmont-Triad	Y	Y	Y
Davidson County Schools	290384	Welcome Elementary	Piedmont-Triad	Y	Y	
Davie County Schools	300326	Pinebrook Elementary	Piedmont-Triad	Y	Y	
Davie County Schools	300330	South Davie Middle	Piedmont-Triad	Y	Y	Y
Duplin County Schools	310308	Beulaville Elementary	Southeast	Y	Y	Y
Duplin County Schools	310336	Warsaw Elementary	Southeast	Y	Y	Y
Duplin County Schools	310352	James Kenan High	Southeast		Y	Y
Duplin County Schools	310356	Kenansville Elementary	Southeast	Y	Y	
Duplin County Schools	310384	Rose Hill-Magnolia Elementary	Southeast	Y	Y	Y
Duplin County Schools	310388	Wallace Elementary	Southeast	Y	Y	
Duplin County Schools	310392	Wallace-Rose Hill High	Southeast		Y	Y
Durham Public Schools	320304	Bethesda Elementary	North Central	Y	Y	
Durham Public Schools	320315	Eno Valley Elementary	North Central	Y	Y	
Durham Public Schools	320324	Hillandale Elementary	North Central	Y		Y
Durham Public Schools	320327	Hope Valley Elementary	North Central	Y	Y	
Durham Public Schools	320332	Forest View Elementary	North Central		Y	Y
Durham Public Schools	320339	Lakewood Elementary	North Central	Y	Y	Y
Durham Public Schools	320343	Lucas Middle	North Central	Y	Y	
Durham Public Schools	320344	Fayetteville Street Elementary	North Central	Y	Y	
Durham Public Schools	320346	Lowe's Grove Middle	North Central	Y	Y	
Durham Public Schools	320355	Neal Middle	North Central	Y	Y	Y
Durham Public Schools	320356	Northern High	North Central	Y	Y	Y
Durham Public Schools	320362	Parkwood Elementary	North Central	Y	Y	Y
Durham Public Schools	320368	Southern School of Energy and Sustainability	North Central	Y	Y	Y
Durham Public Schools	320374	C C Spaulding Elementary	North Central		Y	Y
Durham Public Schools	320400	Y E Smith Elementary	North Central	Y	Y	Y
Durham Public Schools	320401	Ignite Online Academy	North Central	Y	Y	Y
Edenton-Chowan Schools	210304	Chowan Middle	Northeast	Y	Y	
Edenton-Chowan Schools	210306	D F Walker Elementary	Northeast	Y	Y	
Edgecombe County Public Schools	330304	G W Bulluck Elementary	North Central	Y	Y	Y
Edgecombe County Public Schools	330312	Coker-Wimberly Elementary	North Central	Y		Y
Edgecombe County Public Schools	330328	North Edgecombe High	North Central	Y	Y	Y

District Name	School Code	School Name	State Board Region	Low Performing 2023–24	Low Performing 2022–23	Low Performing 2021–22
Edgecombe County Public Schools	330332	Phillips Middle	North Central	Y	Y	
Edgecombe County Public Schools	330334	Princeville Elementary	North Central	Y	Y	Y
Edgecombe County Public Schools	330340	South Edgecombe Middle	North Central	Y	Y	Y
Edgecombe County Public Schools	330344	W A Pattillo Middle	North Central	Y	Y	Y
Edgecombe County Public Schools	330348	West Edgecombe Middle	North Central	Y		Y
Edgecombe County Public Schools	330358	Tarboro High	North Central	Y	Y	Y
Elizabeth City-Pasquotank Public Schools	700306	Central Elementary	Northeast		Y	Y
Elizabeth City-Pasquotank Public Schools	700314	Northside Elementary	Northeast		Y	Y
Elizabeth City-Pasquotank Public Schools	700316	J C Sawyer Elementary	Northeast		Y	Y
Elizabeth City-Pasquotank Public Schools	700317	Northeastern High	Northeast	Y	Y	Y
Elizabeth City-Pasquotank Public Schools	700318	Pasquotank Elementary	Northeast		Y	Y
Elizabeth City-Pasquotank Public Schools	700319	Pasquotank County High	Northeast		Y	Y
Elizabeth City-Pasquotank Public Schools	700322	River Road Middle	Northeast	Y		Y
Franklin County Schools	350310	Bunn Middle	North Central	Y	Y	Y
Franklin County Schools	350312	Cedar Creek Middle	North Central	Y	Y	
Franklin County Schools	350318	Franklinton Elementary	North Central	Y	Y	
Franklin County Schools	350324	Franklinton Middle	North Central	Y	Y	Y
Franklin County Schools	350332	Louisburg Elementary	North Central	Y	Y	
Franklin County Schools	350338	Terrell Lane Middle	North Central	Y	Y	
Gaston County Schools	360332	Bessemer City Central Elem	Southwest	Y	Y	Y
Gaston County Schools	360339	W B Beam Intermediate School	Southwest		Y	Y
Gaston County Schools	360340	Brookside Elementary	Southwest	Y	Y	
Gaston County Schools	360352	Chapel Grove Elementary	Southwest	Y	Y	Y
Gaston County Schools	360376	Costner Elementary	Southwest	Y		Y
Gaston County Schools	360392	Edward D Sadler Jr Elementary School	Southwest	Y	Y	Y
Gaston County Schools	360400	Gardner Park Elementary	Southwest		Y	Y
Gaston County Schools	360408	W P Grier Middle School	Southwest	Y	Y	Y
Gaston County Schools	360426	Holbrook Middle	Southwest	Y	Y	Y
Gaston County Schools	360428	Hunter Huss High	Southwest	Y	Y	Y
Gaston County Schools	360432	Kiser Elementary	Southwest	Y		Y
Gaston County Schools	360436	Bessemer City Middle	Southwest	Y		Y
Gaston County Schools	360438	Lingerfeldt Elementary	Southwest	Y	Y	Y
Gaston County Schools	360480	Pleasant Ridge Elementary	Southwest	Y	Y	Y
Gaston County Schools	360488	Robinson Elementary	Southwest		Y	Y
Gaston County Schools	360490	Sherwood Elementary	Southwest	Y	Y	Y
Gaston County Schools	360492	H H Beam Elementary	Southwest	Y	Y	Y
Gaston County Schools	360504	Tryon Elementary	Southwest	Y	Y	Y

District Name	School Code	School Name	State Board Region	Low Performing 2023–24	Low Performing 2022–23	Low Performing 2021–22
Gaston County Schools	360514	W C Friday Middle School	Southwest	Y	Y	Y
Gaston County Schools	360520	Woodhill Elementary	Southwest	Y	Y	Y
Gates County Schools	370304	Buckland Elementary	Northeast	Y		Y
Gates County Schools	370308	Central Middle School	Northeast	Y	Y	
Graham County Schools	380306	Robbinsville Elementary	Western		Y	Y
Graham County Schools	380310	Robbinsville Middle	Western	Y	Y	Y
Granville County Schools	390309	Butner-Stem Middle	North Central	Y	Y	Y
Granville County Schools	390312	C. G. Credle Elementary	North Central	Y		Y
Granville County Schools	390320	G. C. Hawley Middle	North Central	Y	Y	
Granville County Schools	390322	Granville Central High	North Central	Y		Y
Granville County Schools	390324	J. F. Webb High	North Central		Y	Y
Granville County Schools	390333	Mount Energy Elementary	North Central	Y	Y	Y
Granville County Schools	390334	Northern Granville Middle	North Central	Y	Y	Y
Granville County Schools	390360	Stovall-Shaw Elementary	North Central	Y	Y	
Granville County Schools	390364	West Oxford Elementary	North Central	Y	Y	Y
Greene County Schools	400312	Greene County Middle	Southeast	Y	Y	Y
Greene County Schools	400318	Greene County Intermediate	Southeast	Y	Y	Y
Greene County Schools	400332	West Greene Elementary	Southeast	Y	Y	Y
Guilford County Schools	410310	Allen Jay Elementary	Piedmont-Triad	Y	Y	Y
Guilford County Schools	410544	Ben L. Smith High School	Piedmont-Triad	Y	Y	
Guilford County Schools	410328	Bessemer Elementary	Piedmont-Triad	Y	Y	Y
Guilford County Schools	410331	Bluford Elementary	Piedmont-Triad		Y	Y
Guilford County Schools	410334	Brightwood Elementary	Piedmont-Triad	Y	Y	Y
Guilford County Schools	410349	Ceasar Cone Elementary	Piedmont-Triad		Y	Y
Guilford County Schools	410514	Clara J Peck Elementary	Piedmont-Triad	Y	Y	Y
Guilford County Schools	410376	Cyrus P Frazier Elementary	Piedmont-Triad	Y	Y	Y
Guilford County Schools	410358	Eastern Guilford High	Piedmont-Triad	Y	Y	Y
Guilford County Schools	410460	Eastern Guilford Middle	Piedmont-Triad	Y	Y	Y
Guilford County Schools	410364	Fairview Elementary	Piedmont-Triad	Y	Y	Y
Guilford County Schools	410367	Ferndale Middle	Piedmont-Triad		Y	Y
Guilford County Schools	410542	George C Simkins Jr Elementary	Piedmont-Triad	Y	Y	Y
Guilford County Schools	410385	Gillespie Park Elementary	Piedmont-Triad	Y	Y	Y
Guilford County Schools	410302	Guilford eLearning University Prep	Piedmont-Triad	Y	Y	Y
Guilford County Schools	410400	Guilford Elementary	Piedmont-Triad	Y	Y	Y
Guilford County Schools	410406	High Point Central High	Piedmont-Triad		Y	Y
Guilford County Schools	410409	Hunter Elementary	Piedmont-Triad	Y	Y	Y
Guilford County Schools	410412	Irving Park Elementary	Piedmont-Triad	Y		Y
Guilford County Schools	410355	James B Dudley High	Piedmont-Triad		Y	Y
Guilford County Schools	410436	James Y Joyner Elementary	Piedmont-Triad	Y	Y	Y
Guilford County Schools	410421	Jamestown Middle	Piedmont-Triad	Y	Y	Y
Guilford County Schools	410427	Johnson Street Global Studies	Piedmont-Triad	Y	Y	Y

District Name	School Code	School Name	State Board Region	Low Performing 2023–24	Low Performing 2022–23	Low Performing 2021–22
Guilford County Schools	410373	Julius I Foust Elementary	Piedmont-Triad	Y	Y	
Guilford County Schools	410454	Madison Elementary	Piedmont-Triad	Y	Y	Y
Guilford County Schools	410461	McLeansville Elementary	Piedmont-Triad	Y	Y	Y
Guilford County Schools	410469	Montlieu Academy of Technology	Piedmont-Triad		Y	Y
Guilford County Schools	410478	Murphey Traditional Academy	Piedmont-Triad	Y	Y	Y
Guilford County Schools	410484	Northeast Guilford High	Piedmont-Triad		Y	Y
Guilford County Schools	410487	Northeast Guilford Middle	Piedmont-Triad	Y	Y	Y
Guilford County Schools	410496	Northwood Elementary	Piedmont-Triad		Y	Y
Guilford County Schools	410499	Oak Hill Elementary	Piedmont-Triad	Y	Y	Y
Guilford County Schools	410505	Oak View Elementary	Piedmont-Triad	Y	Y	Y
Guilford County Schools	410511	Parkview Village Elementary	Piedmont-Triad	Y	Y	Y
Guilford County Schools	410391	Penn-Griffin Schools	Piedmont-Triad	Y	Y	Y
Guilford County Schools	410532	Rankin Elementary	Piedmont-Triad	Y	Y	Y
Guilford County Schools	410530	Reedy Fork Elementary	Piedmont-Triad		Y	Y
Guilford County Schools	410462	Ronald E. McNair Elementary	Piedmont-Triad	Y	Y	Y
Guilford County Schools	410535	Sedalia Elementary	Piedmont-Triad	Y	Y	Y
Guilford County Schools	410538	Sedgefield Elementary	Piedmont-Triad	Y	Y	Y
Guilford County Schools	410550	Southeast Guilford Middle	Piedmont-Triad	Y		Y
Guilford County Schools	410556	Southern Guilford High	Piedmont-Triad	Y		Y
Guilford County Schools	410313	Southern Guilford Middle	Piedmont-Triad	Y	Y	Y
Guilford County Schools	410565	Southwest Guilford Middle	Piedmont-Triad	Y	Y	Y
Guilford County Schools	410577	Sumner Elementary	Piedmont-Triad	Y	Y	Y
Guilford County Schools	410325	Swann Middle School	Piedmont-Triad	Y	Y	Y
Guilford County Schools	410578	Triangle Lake Montessori Elem	Piedmont-Triad		Y	Y
Guilford County Schools	410580	Union Hill Elementary	Piedmont-Triad		Y	Y
Guilford County Schools	410583	Vandalia Elementary	Piedmont-Triad	Y		Y
Guilford County Schools	410366	Waldo C Falkener Sr Elementary	Piedmont-Triad	Y	Y	Y
Guilford County Schools	410592	Welborn Middle	Piedmont-Triad	Y	Y	
Guilford County Schools	410397	Western Guilford Middle	Piedmont-Triad		Y	Y
Guilford County Schools	410598	Wiley Accel/Enrichment	Piedmont-Triad	Y	Y	Y
Halifax County Schools	420316	Scotland Neck Elementary Leadership Acad	Northeast	Y	Y	
Halifax County Schools	420324	Enfield Middle S.T.E.A.M. Academy	Northeast		Y	Y
Halifax County Schools	420328	Everetts Elementary S.T.E.M. Academy	Northeast		Y	Y
Halifax County Schools	420336	Hollister Elementary Leadership Academy	Northeast	Y	Y	Y
Halifax County Schools	420340	Inborden Elementary S.T.E.A.M. Academy	Northeast	Y	Y	
Halifax County Schools	420346	Northwest Halifax Collegiate and Technic	Northeast	Y	Y	Y
Halifax County Schools	420348	Pittman Elementary Leadership Academy	Northeast	Y	Y	Y
Halifax County Schools	420358	Southeast Halifax Collegiate Prep Academ	Northeast	Y	Y	Y

District Name	School Code	School Name	State Board Region	Low Performing 2023–24	Low Performing 2022–23	Low Performing 2021–22
Halifax County Schools	420376	William R Davie Middle S.T.E.M. Academy	Northeast	Y	Y	Y
Harnett County Schools	430308	Angier Elementary	North Central	Y	Y	
Harnett County Schools	430316	Boone Trail Elementary	North Central	Y	Y	Y
Harnett County Schools	430328	Coats Elementary	North Central	Y	Y	Y
Harnett County Schools	430330	Coats-Erwin Middle	North Central	Y	Y	
Harnett County Schools	430336	Erwin Elementary	North Central	Y	Y	Y
Harnett County Schools	430344	Dunn Elementary	North Central	Y	Y	Y
Harnett County Schools	430347	Harnett Central Middle	North Central	Y	Y	Y
Harnett County Schools	430348	Johnsonville Elementary	North Central		Y	Y
Harnett County Schools	430349	Highland Elementary	North Central	Y	Y	Y
Harnett County Schools	430351	Highland Middle	North Central	Y	Y	Y
Harnett County Schools	430358	Lillington-Shawtown Elementary	North Central	Y	Y	Y
Harnett County Schools	430369	Overhills Elementary	North Central		Y	Y
Harnett County Schools	430376	South Harnett Elementary	North Central	Y	Y	Y
Harnett County Schools	430385	Harnett Virtual Academy	North Central	Y	Y	Y
Henderson County Schools	450301	Apple Valley Middle	Western	Y	Y	Y
Henderson County Schools	450308	Dana Elementary	Western	Y	Y	
Henderson County Schools	450322	Edneyville Elementary	Western	Y	Y	Y
Henderson County Schools	450336	Hillandale Elementary	Western	Y	Y	
Henderson County Schools	450346	Upward Elementary	Western		Y	Y
Hertford County Schools	460308	Ahoskie Elementary	Northeast		Y	Y
Hertford County Schools	460312	Bearfield Primary	Northeast	Y	Y	Y
Hertford County Schools	460318	Hertford County Middle	Northeast		Y	Y
Hertford County Schools	460320	Hertford County High	Northeast	Y	Y	Y
Hertford County Schools	460332	Riverview Elementary	Northeast	Y		Y
Hickory City Schools	181316	Grandview Middle	Northwest	Y	Y	Y
Hickory City Schools	181332	Longview Elementary	Northwest	Y	Y	
Hickory City Schools	181344	Viewmont Elementary	Northwest	Y	Y	Y
Hoke County Schools	470316	J W McLaughlin Elementary	Sandhills	Y		Y
Hoke County Schools	470320	West Hoke Middle	Sandhills	Y		Y
Hoke County Schools	470330	Hawk Eye Elementary	Sandhills	Y	Y	
Hoke County Schools	470332	East Hoke Middle	Sandhills	Y	Y	Y
Hoke County Schools	470336	West Hoke Elementary	Sandhills	Y		Y
Hoke County Schools	470441	Sandy Grove Elementary	Sandhills		Y	Y
Hoke County Schools	470442	Sandy Grove Middle	Sandhills		Y	Y
Hyde County Schools	480306	Mattamuskeet School	Northeast	Y	Y	
Iredell-Statesville Schools	490319	Cloverleaf Elementary	Southwest	Y	Y	Y
Iredell-Statesville Schools	490326	East Iredell Elementary	Southwest	Y	Y	Y
Iredell-Statesville Schools	490327	East Iredell Middle	Southwest	Y	Y	Y
Iredell-Statesville Schools	490345	N B Mills Elementary	Southwest	Y	Y	Y
Iredell-Statesville Schools	490349	North Iredell Middle	Southwest	Y	Y	Y

District Name	School Code	School Name	State Board Region	Low Performing 2023–24	Low Performing 2022–23	Low Performing 2021–22
Iredell-Statesville Schools	490352	Third Creek Middle	Southwest	Y	Y	Y
Iredell-Statesville Schools	490354	Statesville High	Southwest	Y	Y	Y
Iredell-Statesville Schools	490363	Third Creek Elementary	Southwest	Y	Y	Y
Iredell-Statesville Schools	490366	Troutman Middle	Southwest	Y	Y	
Iredell-Statesville Schools	490380	West Iredell High	Southwest	Y	Y	Y
Iredell-Statesville Schools	490384	West Iredell Middle	Southwest	Y	Y	Y
Jackson County Public Schools	500302	Blue Ridge Early College	Western	Y	Y	
Jackson County Public Schools	500304	Cullowhee Valley School	Western	Y	Y	Y
Jackson County Public Schools	500332	Scotts Creek School	Western	Y	Y	
Jackson County Public Schools	500337	Smokey Mountain Elementary	Western	Y	Y	Y
Johnston County Public Schools	510365	JCPS Virtual Academy	North Central		Y	Y
Johnston County Public Schools	510404	South Smithfield Elementary	North Central		Y	Y
Jones County Schools	520328	Maysville Elementary	Southeast	Y		Y
Jones County Schools	520336	Trenton Elementary	Southeast	Y	Y	Y
Kannapolis City Schools	132304	A L Brown High	Southwest	Y	Y	Y
Kannapolis City Schools	132308	Forest Park Elementary	Southwest		Y	Y
Kannapolis City Schools	132312	Fred L Wilson Elementary	Southwest	Y	Y	Y
Kannapolis City Schools	132314	GW Carver Elementary	Southwest	Y		Y
Kannapolis City Schools	132330	Kannapolis Middle	Southwest	Y	Y	Y
Kannapolis City Schools	132332	Shady Brook Elementary	Southwest	Y	Y	Y
Lee County Schools	530308	Broadway Elementary	North Central	Y	Y	
Lee County Schools	530314	East Lee Middle	North Central	Y	Y	Y
Lee County Schools	530356	West Lee Middle	North Central	Y	Y	Y
Lee County Schools	530360	WB Wicker Elementary	North Central	Y	Y	
Lenoir County Public Schools	540308	Contentnea-Savannah School	Southeast	Y	Y	Y
Lenoir County Public Schools	540315	Kinston High	Southeast	Y	Y	Y
Lenoir County Public Schools	540316	La Grange Elementary	Southeast		Y	Y
Lenoir County Public Schools	540324	North Lenoir High	Southeast		Y	Y
Lenoir County Public Schools	540325	Northeast Elementary	Southeast	Y	Y	Y
Lenoir County Public Schools	540330	Rochelle Middle	Southeast	Y	Y	Y
Lenoir County Public Schools	540338	Southeast Elementary	Southeast	Y	Y	Y
Lenoir County Public Schools	540340	Southwood Elementary	Southeast	Y	Y	
Lexington City Schools	291332	Lexington Middle School	Piedmont-Triad	Y	Y	Y
Lexington City Schools	291340	Pickett Elementary School	Piedmont-Triad	Y		Y
Lincoln County Schools	550312	Battleground Elementary	Southwest		Y	Y
Lincoln County Schools	550334	Lincolnton Middle	Southwest	Y		Y
Lincoln County Schools	550336	Love Memorial Elementary	Southwest	Y		Y
Macon County Schools	560331	Mountain View Intermediate	Western	Y	Y	Y
Martin County Schools	580312	E J Hayes Elementary	Northeast	Y	Y	Y



District Name	School Code	School Name	State Board Region	Low Performing 2023–24	Low Performing 2022–23	Low Performing 2021–22
Martin County Schools	580316	South Creek Elementary	Northeast	Y		Y
Martin County Schools	580337	South Creek Middle	Northeast	Y	Y	Y
Martin County Schools	580344	South Creek High	Northeast	Y	Y	Y
Martin County Schools	580368	Riverside High	Northeast	Y	Y	Y
Martin County Schools	580372	Riverside Middle	Northeast	Y	Y	Y
McDowell County Schools	590310	East McDowell Middle School	Northwest	Y	Y	
McDowell County Schools	590329	McDowell Virtual Academy	Northwest		Y	Y
McDowell County Schools	590336	North Cove Elementary School	Northwest	Y		Y
McDowell County Schools	590344	Pleasant Gardens Elementary School	Northwest		Y	Y
Mitchell County Schools	610326	Harris Middle	Northwest	Y	Y	
Montgomery County Schools	620312	Candor Elementary	Sandhills	Y	Y	Y
Montgomery County Schools	620318	Green Ridge Elementary	Sandhills	Y	Y	
Montgomery County Schools	620324	Mount Gilead Elementary	Sandhills	Y	Y	
Montgomery County Schools	620330	Page Street Elementary	Sandhills	Y		Y
Montgomery County Schools	620339	West Middle	Sandhills	Y	Y	Y
Moore County Schools	630308	Aberdeen Elementary	Sandhills	Y	Y	Y
Moore County Schools	630348	Robbins Elementary	Sandhills	Y	Y	Y
Mooresville Graded School District	491308	Mooresville Middle	Southwest		Y	Y
Mount Airy City Schools	862310	Jones Intermediate	Piedmont-Triad	Y		Y
Nash County Public Schools	640306	Baskerville Elementary	North Central	Y	Y	Y
Nash County Public Schools	640308	Benvenue Elementary	North Central		Y	Y
Nash County Public Schools	640320	Nash Central Middle	North Central		Y	Y
Nash County Public Schools	640326	D S Johnson Elementary	North Central	Y	Y	Y
Nash County Public Schools	640328	Englewood Elementary	North Central		Y	Y
Nash County Public Schools	640335	Rocky Mount Middle	North Central	Y	Y	
Nash County Public Schools	640361	Rocky Mount High	North Central	Y	Y	Y
Nash County Public Schools	640376	Spring Hope Elementary	North Central		Y	Y
New Hanover County Schools	650312	R Freeman Sch of Engineering	Southeast	Y	Y	Y
New Hanover County Schools	650316	College Park Elementary	Southeast	Y	Y	Y
New Hanover County Schools	650324	Edwin A Alderman Elementary	Southeast	Y		Y
New Hanover County Schools	650328	Forest Hills Global Elementary	Southeast	Y	Y	Y
New Hanover County Schools	650355	Career Readiness Academy at Mosley PLC	Southeast	Y	Y	Y
New Hanover County Schools	650384	A H Snipes Academy of Arts/Des	Southeast		Y	Y
New Hanover County Schools	650392	Williston Middle	Southeast		Y	Y
New Hanover County Schools	650404	Wrightsboro Elementary	Southeast	Y	Y	Y
Newton Conover City Schools	182324	South Newton Elementary	Northwest		Y	Y
Northampton County Schools	660306	Central Elementary	Northeast		Y	Y
Northampton County Schools	660336	Northampton County High School	Northeast	Y	Y	Y
Onslow County Schools	670304	Bell Fork Elementary	Southeast	Y		Y
Onslow County Schools	670308	Blue Creek Elementary	Southeast	Y	Y	Y

District Name	School Code	School Name	State Board Region	Low Performing 2023–24	Low Performing 2022–23	Low Performing 2021–22
Onslow County Schools	670312	Clyde Erwin Elementary	Southeast	Y	Y	Y
Onslow County Schools	670321	Hunters Creek Elementary	Southeast		Y	Y
Onslow County Schools	670322	Hunters Creek Middle	Southeast		Y	Y
Onslow County Schools	670323	Jacksonville Commons Elem	Southeast	Y	Y	Y
Onslow County Schools	670325	Jacksonville Commons Middle	Southeast	Y	Y	
Onslow County Schools	670329	Meadow View Elementary	Southeast		Y	Y
Onslow County Schools	670332	Northwoods Elementary	Southeast	Y		Y
Onslow County Schools	670336	Northwoods Park Middle	Southeast	Y		Y
Onslow County Schools	670342	Silverdale Elementary	Southeast	Y		Y
Onslow County Schools	670343	Southwest Elementary	Southeast		Y	Y
Onslow County Schools	670345	Southwest Middle	Southeast	Y	Y	Y
Onslow County Schools	670346	Summersill Elementary	Southeast		Y	Y
Onslow County Schools	670347	Stateside Elementary	Southeast		Y	Y
Onslow County Schools	670356	Trexler Middle	Southeast	Y	Y	Y
Orange County Schools	680304	A L Stanback Middle	North Central	Y	Y	
Orange County Schools	680312	Central Elementary	North Central	Y	Y	
Orange County Schools	680327	Gravelly Hill Middle	North Central		Y	Y
Pender County Schools	710312	C.F. Pope Elementary	Southeast	Y	Y	
Pender County Schools	710316	Burgaw Middle	Southeast	Y	Y	Y
Pender County Schools	710320	Cape Fear Middle	Southeast		Y	Y
Pender County Schools	710324	Malpass Corner Elementary	Southeast	Y	Y	
Pender County Schools	710326	Pender High	Southeast	Y	Y	Y
Pender County Schools	710328	Penderlea Elementary	Southeast	Y	Y	Y
Pender County Schools	710348	West Pender Middle	Southeast	Y	Y	Y
Person County Schools	730334	North Elementary	North Central	Y	Y	Y
Person County Schools	730344	Northern Middle	North Central	Y	Y	Y
Pitt County Schools	740308	Ayden Middle	Northeast	Y	Y	
Pitt County Schools	740310	Belvoir Elementary	Northeast	Y	Y	Y
Pitt County Schools	740320	Bethel Elementary	Northeast	Y	Y	Y
Pitt County Schools	740324	C M Eppes Middle	Northeast	Y	Y	
Pitt County Schools	740334	Falkland Elementary	Northeast	Y	Y	Y
Pitt County Schools	740337	E B Aycock Middle	Northeast		Y	Y
Pitt County Schools	740340	Farmville Middle	Northeast	Y	Y	Y
Pitt County Schools	740352	Grifton	Northeast		Y	Y
Pitt County Schools	740368	Lakeforest Elementary	Northeast		Y	Y
Pitt County Schools	740375	Northwest Elementary	Northeast		Y	Y
Pitt County Schools	740376	Pactolus	Northeast	Y	Y	
Pitt County Schools	740386	Sam D Bundy Elementary	Northeast		Y	Y
Pitt County Schools	740390	South Greenville Elementary	Northeast	Y	Y	Y
Pitt County Schools	740400	Wahl Coates Elementary	Northeast	Y	Y	Y
Pitt County Schools	740402	Wellcome Middle	Northeast		Y	Y

District Name	School Code	School Name	State Board Region	Low Performing 2023–24	Low Performing 2022–23	Low Performing 2021–22
Public Schools of Robeson County	780320	Deep Branch Elementary	Sandhills	Y	Y	Y
Public Schools of Robeson County	780325	Fairmont High	Sandhills	Y	Y	Y
Public Schools of Robeson County	780326	Fairmont Middle	Sandhills	Y	Y	Y
Public Schools of Robeson County	780328	Fairgrove Elementary School	Sandhills	Y	Y	Y
Public Schools of Robeson County	780330	L Gilbert Carroll	Sandhills	Y	Y	Y
Public Schools of Robeson County	780336	Littlefield Middle	Sandhills	Y	Y	
Public Schools of Robeson County	780340	Long Branch Elementary	Sandhills	Y	Y	Y
Public Schools of Robeson County	780341	Lumberton Junior	Sandhills	Y		Y
Public Schools of Robeson County	780352	Orrum Middle	Sandhills	Y	Y	Y
Public Schools of Robeson County	780360	Parkton Elementary	Sandhills	Y	Y	Y
Public Schools of Robeson County	780364	Pembroke Elementary	Sandhills	Y	Y	Y
Public Schools of Robeson County	780368	Pembroke Middle	Sandhills	Y	Y	
Public Schools of Robeson County	780374	Peterson Elementary	Sandhills	Y	Y	Y
Public Schools of Robeson County	780376	Piney Grove Elementary	Sandhills	Y	Y	Y
Public Schools of Robeson County	780391	Red Springs High	Sandhills	Y		Y
Public Schools of Robeson County	780392	Rex-Rennert Elementary	Sandhills	Y	Y	Y
Public Schools of Robeson County	780393	Red Springs Middle	Sandhills	Y	Y	Y
Public Schools of Robeson County	780394	Rosenwald Elementary	Sandhills	Y	Y	Y
Public Schools of Robeson County	780400	Saint Pauls Elementary	Sandhills	Y	Y	
Public Schools of Robeson County	780403	Saint Pauls Middle	Sandhills	Y	Y	
Public Schools of Robeson County	780408	Southside Ashpole Elementary	Sandhills	Y	Y	
Public Schools of Robeson County	780410	Townsend Elementary	Sandhills	Y	Y	Y
Public Schools of Robeson County	780417	W H Knuckles	Sandhills	Y	Y	Y
Public Schools of Robeson County	780421	South Robeson Middle School	Sandhills	Y	Y	Y
Randolph County School System	760308	Trinity Middle School	Piedmont-Triad	Y	Y	Y
Randolph County School System	760316	Coleridge Elementary School	Piedmont-Triad	Y		Y
Randolph County School System	760318	Eastern Randolph High School	Piedmont-Triad	Y	Y	Y
Randolph County School System	760324	Franklinville Elementary School	Piedmont-Triad		Y	Y
Randolph County School System	760332	Liberty Elementary School	Piedmont-Triad	Y	Y	Y
Randolph County School System	760338	Northeastern Randolph Middle School	Piedmont-Triad		Y	Y
Randolph County School System	760340	Ramseur Elementary School	Piedmont-Triad	Y	Y	Y
Randolph County School System	760344	Randleman Elementary School	Piedmont-Triad	Y	Y	Y

District Name	School Code	School Name	State Board Region	Low Performing 2023–24	Low Performing 2022–23	Low Performing 2021–22
Randolph County School System	760352	Randleman Middle School	Piedmont-Triad	Y	Y	Y
Randolph County School System	760357	Southeastern Randolph Middle School	Piedmont-Triad	Y	Y	Y
Randolph County School System	760358	Southwestern Randolph High School	Piedmont-Triad	Y	Y	Y
Randolph County School System	760360	Southwestern Randolph Middle School	Piedmont-Triad	Y		Y
Randolph County School System	760376	Trinity Elementary School	Piedmont-Triad	Y	Y	Y
Randolph County School System	760382	Uwharrie Ridge Six-Twelve	Piedmont-Triad	Y	Y	Y
Randolph County School System	760385	The Virtual Academy at Randolph	Piedmont-Triad	Y		Y
Richmond County Schools	770310	East Rockingham Elementary	Sandhills	Y	Y	Y
Richmond County Schools	770368	West Rockingham Elementary	Sandhills		Y	Y
Richmond County Schools	770370	Washington Street Elementary	Sandhills	Y	Y	Y
Roanoke Rapids City Schools	421304	Belmont Elementary School	Northeast	Y	Y	Y
Roanoke Rapids City Schools	421306	Chaloner Middle School	Northeast	Y		Y
Roanoke Rapids City Schools	421316	Roanoke Rapids High School	Northeast		Y	Y
Rockingham County Schools	790330	J E Holmes Middle	Piedmont-Triad	Y	Y	Y
Rockingham County Schools	790350	Monroeton Elementary	Piedmont-Triad	Y	Y	
Rockingham County Schools	790362	John W Dillard Academy	Piedmont-Triad		Y	Y
Rockingham County Schools	790366	Reidsville High	Piedmont-Triad	Y	Y	Y
Rockingham County Schools	790374	Reidsville Middle	Piedmont-Triad	Y	Y	
Rockingham County Schools	790386	South End Elementary	Piedmont-Triad		Y	Y
Rockingham County Schools	790402	Williamsburg Elementary	Piedmont-Triad	Y	Y	
Rowan-Salisbury Schools	800314	Erwin Middle	Southwest	Y	Y	Y
Rowan-Salisbury Schools	800315	Overton Elementary	Southwest	Y	Y	Y
Rowan-Salisbury Schools	800316	China Grove Elementary	Southwest		Y	Y
Rowan-Salisbury Schools	800320	China Grove Middle	Southwest	Y	Y	Y
Rowan-Salisbury Schools	800328	Corriher Lipe Middle	Southwest	Y	Y	Y
Rowan-Salisbury Schools	800346	Koontz Elementary	Southwest	Y	Y	Y
Rowan-Salisbury Schools	800347	Shive Elementary	Southwest		Y	Y
Rowan-Salisbury Schools	800356	Granite Quarry Elementary	Southwest		Y	Y
Rowan-Salisbury Schools	800358	Isenberg Elementary	Southwest		Y	Y
Rowan-Salisbury Schools	800359	Dole Elementary	Southwest	Y	Y	Y
Rowan-Salisbury Schools	800360	Hurley Elementary	Southwest	Y	Y	Y
Rowan-Salisbury Schools	800362	Knollwood Elementary	Southwest	Y	Y	Y
Rowan-Salisbury Schools	800368	Morgan Elementary	Southwest	Y		Y
Rowan-Salisbury Schools	800373	North Rowan Elementary	Southwest	Y	Y	Y
Rowan-Salisbury Schools	800376	North Rowan High	Southwest	Y	Y	Y
Rowan-Salisbury Schools	800377	North Rowan Middle	Southwest	Y	Y	Y
Rowan-Salisbury Schools	800396	Salisbury High	Southwest	Y	Y	Y
Rowan-Salisbury Schools	800398	Southeast Middle	Southwest	Y	Y	Y
Rowan-Salisbury Schools	800400	South Rowan High	Southwest	Y	Y	Y

District Name	School Code	School Name	State Board Region	Low Performing 2023–24	Low Performing 2022–23	Low Performing 2021–22
Rowan-Salisbury Schools	800406	West Rowan Elementary	Southwest	Y	Y	Y
Rowan-Salisbury Schools	800408	West Rowan High	Southwest	Y	Y	Y
Rowan-Salisbury Schools	800410	West Rowan Middle	Southwest	Y	Y	Y
Rowan-Salisbury Schools	800500	Summit Virtual Academy	Southwest	Y	Y	Y
Rutherford County Schools	810342	East Rutherford Middle School	Western	Y	Y	Y
Sampson County Schools	820347	Hobbs Middle	Sandhills	Y	Y	Y
Sampson County Schools	820370	Union Middle	Sandhills	Y	Y	Y
Sampson County Schools	820372	Roseboro-Salemburg Middle	Sandhills	Y	Y	Y
Sampson County Schools	820385	Union Intermediate	Sandhills	Y		Y
Scotland County Schools	830304	Carver Middle	Sandhills	Y	Y	Y
Scotland County Schools	830328	Laurel Hill Elementary	Sandhills	Y	Y	Y
Scotland County Schools	830343	Scotland High School	Sandhills	Y	Y	
Scotland County Schools	830349	Spring Hill Middle	Sandhills	Y	Y	
Scotland County Schools	830360	Wagram Elementary	Sandhills	Y	Y	Y
Scotland County Schools	830364	Sycamore Lane Elementary	Sandhills	Y	Y	Y
Stanly County Schools	840302	Albemarle High	Southwest	Y	Y	Y
Stanly County Schools	840303	Albemarle Middle	Southwest	Y	Y	Y
Stanly County Schools	840304	Aquadale Elementary	Southwest		Y	Y
Stanly County Schools	840312	Endy Elementary	Southwest		Y	Y
Stanly County Schools	840316	East Albemarle Elementary	Southwest	Y	Y	Y
Stanly County Schools	840328	North Stanly Middle	Southwest	Y	Y	Y
Stanly County Schools	840336	Norwood Elementary	Southwest		Y	Y
Stanly County Schools	840358	South Stanly Middle	Southwest		Y	Y
Stanly County Schools	840360	Stanfield Elementary	Southwest		Y	Y
Stanly County Schools	840366	Stanly County Virtual Education	Southwest	Y	Y	Y
Stokes County Schools	850320	Lawsonville Elementary School	Piedmont-Triad	Y		Y
Stokes County Schools	850336	Pine Hall Elementary School	Piedmont-Triad		Y	Y
Stokes County Schools	850350	Southeastern Stokes Middle School	Piedmont-Triad	Y	Y	Y
Stokes County Schools	850354	London Elementary School	Piedmont-Triad	Y	Y	
Stokes County Schools	850356	Walnut Cove Elementary School	Piedmont-Triad		Y	Y
Surry County Schools	860306	Central Middle	Piedmont-Triad		Y	Y
Swain County Schools	870320	Swain County East Elementary	Western	Y		Y
Thomasville City Schools	292316	Liberty Drive Elementary	Piedmont-Triad		Y	Y
Thomasville City Schools	292318	Thomasville Primary	Piedmont-Triad	Y	Y	Y
Thomasville City Schools	292324	Thomasville High	Piedmont-Triad	Y	Y	Y
Tyrrell County Schools	890306	Columbia Middle	Northeast		Y	Y
Tyrrell County Schools	890308	Tyrrell Elementary	Northeast	Y		Y
Union County Public Schools	900304	Benton Heights Elementary	Southwest	Y		Y
Union County Public Schools	900306	East Elementary	Southwest	Y	Y	Y
Union County Public Schools	900308	East Union Middle	Southwest		Y	Y
Union County Public Schools	900314	Monroe Middle	Southwest	Y	Y	Y

District Name	School Code	School Name	State Board Region	Low Performing 2023–24	Low Performing 2022–23	Low Performing 2021–22
Union County Public Schools	900336	Monroe High	Southwest	Y	Y	Y
Union County Public Schools	900346	Parkwood Middle	Southwest	Y	Y	Y
Union County Public Schools	900362	Sun Valley Middle	Southwest	Y	Y	
Union County Public Schools	900370	Walter Bickett Elementary	Southwest	Y	Y	Y
Vance County Schools	910308	Carver Elementary	North Central	Y	Y	Y
Vance County Schools	910311	Clarke Elementary	North Central	Y	Y	Y
Vance County Schools	910314	Dabney Elementary	North Central	Y	Y	
Vance County Schools	910316	Vance County Middle School	North Central	Y	Y	Y
Vance County Schools	910340	New Hope Elementary	North Central	Y		Y
Vance County Schools	910346	E O Young Jr Elementary	North Central	Y	Y	Y
Vance County Schools	910356	Pinkston Street Elementary	North Central	Y	Y	
Vance County Schools	910360	E M Rollins Elementary	North Central		Y	Y
Vance County Schools	910369	Vance Virtual Village Academy	North Central	Y	Y	Y
Vance County Schools	910370	Vance County High School	North Central	Y	Y	Y
Vance County Schools	910376	L B Yancey Elementary	North Central	Y	Y	
Vance County Schools	910380	Zeb Vance Elementary	North Central	Y	Y	
Wake County Schools	920320	Aversboro Elementary	North Central		Y	Y
Wake County Schools	920326	Baileywick Road Elementary	North Central	Y	Y	Y
Wake County Schools	920336	Brentwood Elementary	North Central	Y	Y	
Wake County Schools	920342	Brier Creek Elementary	North Central	Y		Y
Wake County Schools	920352	Bugg Elementary	North Central	Y	Y	
Wake County Schools	920360	Carroll Middle	North Central	Y	Y	Y
Wake County Schools	920370	Centennial Campus Middle	North Central	Y	Y	Y
Wake County Schools	920393	Dillard Drive Elementary	North Central	Y	Y	Y
Wake County Schools	920394	Dillard Drive Middle	North Central		Y	Y
Wake County Schools	920398	Durant Road Elementary	North Central	Y	Y	Y
Wake County Schools	920399	Durant Road Middle	North Central	Y	Y	Y
Wake County Schools	920403	East Garner Elementary	North Central		Y	Y
Wake County Schools	920404	East Garner Middle	North Central	Y	Y	Y
Wake County Schools	920408	East Millbrook Middle	North Central	Y	Y	Y
Wake County Schools	920410	Neuse River Middle	North Central	Y	Y	Y
Wake County Schools	920415	Fox Road Elementary	North Central	Y	Y	
Wake County Schools	920440	Green Elementary	North Central		Y	Y
Wake County Schools	920446	Hodge Road Elementary	North Central	Y	Y	
Wake County Schools	920466	Knightdale High	North Central	Y	Y	Y
Wake County Schools	920496	Millbrook Elementary	North Central	Y	Y	Y
Wake County Schools	920512	North Garner Middle	North Central	Y	Y	Y
Wake County Schools	920542	Reedy Creek Elementary	North Central		Y	Y
Wake County Schools	920547	Rogers Lane Elementary	North Central	Y	Y	
Wake County Schools	920549	River Bend Middle	North Central	Y	Y	
Wake County Schools	920560	Smith Elementary	North Central		Y	Y

District Name	School Code	School Name	State Board Region	Low Performing 2023–24	Low Performing 2022–23	Low Performing 2021–22
Wake County Schools	920562	Southeast Raleigh High	North Central		Y	Y
Wake County Schools	920563	Southeast Raleigh Elementary	North Central	Y	Y	Y
Wake County Schools	920570	Timber Drive Elementary	North Central	Y	Y	
Wake County Schools	920580	Vandora Springs Elementary	North Central		Y	Y
Wake County Schools	920592	Wake Forest Middle School	North Central	Y	Y	Y
Wake County Schools	920597	Wakelon Elementary	North Central		Y	Y
Wake County Schools	920599	Walnut Creek Elementary	North Central	Y	Y	
Wake County Schools	920600	Wendell Elementary	North Central	Y	Y	Y
Wake County Schools	920601	Wendell Middle	North Central	Y	Y	
Wake County Schools	920616	Wilburn Elementary	North Central	Y	Y	Y
Wake County Schools	920618	Wildwood Forest Elementary	North Central	Y	Y	
Wake County Schools	920632	Zebulon Elementary	North Central	Y	Y	Y
Warren County Schools	930330	Mariam Boyd Elementary	North Central	Y	Y	Y
Warren County Schools	930340	Northside Elementary	North Central	Y	Y	Y
Warren County Schools	930348	Vaughan Elementary	North Central	Y	Y	Y
Warren County Schools	930352	Warren County High	North Central	Y	Y	Y
Warren County Schools	930354	Warren County Middle	North Central	Y	Y	Y
Washington County Schools	940306	Creswell Elementary	Northeast	Y		Y
Washington County Schools	940314	Pines Elementary	Northeast		Y	Y
Washington County Schools	940316	Washington County High	Northeast	Y	Y	Y
Washington County Schools	940328	Washington County Middle	Northeast	Y	Y	
Wayne County Public Schools	960312	Brogden Middle	Southeast		Y	Y
Wayne County Public Schools	960314	Brogden Primary	Southeast	Y	Y	Y
Wayne County Public Schools	960318	Carver Heights Elementary	Southeast	Y	Y	Y
Wayne County Public Schools	960326	Dillard Middle	Southeast	Y	Y	Y
Wayne County Public Schools	960329	Eastern Wayne Elementary	Southeast	Y	Y	Y
Wayne County Public Schools	960330	Eastern Wayne High	Southeast		Y	Y
Wayne County Public Schools	960331	Eastern Wayne Middle	Southeast	Y	Y	Y
Wayne County Public Schools	960335	Goldsboro High	Southeast	Y	Y	Y
Wayne County Public Schools	960338	Grantham Middle	Southeast	Y	Y	Y
Wayne County Public Schools	960348	Mount Olive Middle	Southeast		Y	Y
Wayne County Public Schools	960380	Southern Wayne High	Southeast	Y	Y	Y
Wayne County Public Schools	960387	Spring Creek Middle	Southeast		Y	Y
Wayne County Public Schools	960388	Tommy's Road Elementary	Southeast	Y	Y	Y
Wayne County Public Schools	960450	Northeast Elementary	Southeast	Y	Y	
Weldon City Schools	422314	Weldon Elementary Global Academy	Northeast	Y	Y	Y
Weldon City Schools	422315	Weldon STEM High School Career Academies	Northeast		Y	Y
Weldon City Schools	422318	Weldon Middle	Northeast	Y	Y	
Wilkes County Schools	970308	Boomer-Ferguson Elementary School	Northwest	Y	Y	Y
Wilkes County Schools	970312	C C Wright Elementary School	Northwest	Y	Y	Y

District Name	School Code	School Name	State Board Region	Low Performing 2023–24	Low Performing 2022–23	Low Performing 2021–22
Wilson County Schools	980308	B O Barnes Elementary	North Central	Y	Y	
Wilson County Schools	980317	Charles H Darden Middle	North Central	Y	Y	Y
Wilson County Schools	980356	Margaret Hearne Elementary	North Central	Y		Y
Wilson County Schools	980357	Vick Elementary	North Central	Y	Y	Y
Winston Salem / Forsyth County Schools	340308	Ashley Academy	Piedmont-Triad	Y		Y
Winston Salem / Forsyth County Schools	340314	Bolton Elementary	Piedmont-Triad	Y	Y	Y
Winston Salem / Forsyth County Schools	340330	Carver High	Piedmont-Triad	Y		Y
Winston Salem / Forsyth County Schools	340430	Diggs-Latham Elementary	Piedmont-Triad		Y	Y
Winston Salem / Forsyth County Schools	340366	East Forsyth Middle School	Piedmont-Triad	Y	Y	Y
Winston Salem / Forsyth County Schools	340372	Flat Rock Middle	Piedmont-Triad	Y	Y	Y
Winston Salem / Forsyth County Schools	340376	Forest Park Elementary	Piedmont-Triad	Y	Y	Y
Winston Salem / Forsyth County Schools	340380	Gibson Elementary	Piedmont-Triad	Y	Y	
Winston Salem / Forsyth County Schools	340384	Griffith Elementary	Piedmont-Triad		Y	Y
Winston Salem / Forsyth County Schools	340390	Hall-Woodward Elementary	Piedmont-Triad	Y	Y	Y
Winston Salem / Forsyth County Schools	340488	J F Kennedy High	Piedmont-Triad	Y	Y	Y
Winston Salem / Forsyth County Schools	340424	Kimberley Park Elementary	Piedmont-Triad	Y		Y
Winston Salem / Forsyth County Schools	340426	Kimmel Farm Elementary	Piedmont-Triad	Y	Y	Y
Winston Salem / Forsyth County Schools	340448	Mineral Springs Elementary	Piedmont-Triad		Y	Y
Winston Salem / Forsyth County Schools	340452	Mineral Springs Middle	Piedmont-Triad	Y	Y	Y
Winston Salem / Forsyth County Schools	340460	North Forsyth High	Piedmont-Triad	Y	Y	Y
Winston Salem / Forsyth County Schools	340462	North Hills Elementary	Piedmont-Triad	Y	Y	Y
Winston Salem / Forsyth County Schools	340464	Northwest Middle	Piedmont-Triad	Y	Y	Y
Winston Salem / Forsyth County Schools	340476	Old Town Elementary	Piedmont-Triad	Y	Y	
Winston Salem / Forsyth County Schools	340480	Paisley IB Magnet School	Piedmont-Triad	Y	Y	Y
Winston Salem / Forsyth County Schools	340486	Parkland High	Piedmont-Triad	Y	Y	Y
Winston Salem / Forsyth County Schools	340492	Philo-Hill Magnet Academy	Piedmont-Triad	Y	Y	Y
Winston Salem / Forsyth County Schools	340382	Robert B Glenn High School	Piedmont-Triad	Y	Y	Y
Winston Salem / Forsyth County Schools	340514	Smith Farm Elementary	Piedmont-Triad	Y	Y	Y
Winston Salem / Forsyth County Schools	340520	South Fork Elementary	Piedmont-Triad	Y	Y	Y
Winston Salem / Forsyth County Schools	340516	Southeast Middle	Piedmont-Triad	Y	Y	Y
Winston Salem / Forsyth County Schools	340398	Virtual Academy	Piedmont-Triad	Y	Y	Y
Winston Salem / Forsyth County Schools	340544	Walkertown Middle	Piedmont-Triad	Y	Y	
Winston Salem / Forsyth County Schools	340548	Ward Elementary	Piedmont-Triad	Y	Y	Y



District Name	School Code	School Name	State Board Region	Low Performing 2023–24	Low Performing 2022–23	Low Performing 2021–22
Winston Salem / Forsyth County Schools	340564	Wiley Magnet Middle	Piedmont-Triad	Y	Y	Y
Winston Salem / Forsyth County Schools	340568	Winston-Salem Preparatory Acad	Piedmont-Triad	Y	Y	Y
Yadkin County Schools	990325	Starmount Middle	Piedmont-Triad	Y		Y
Yadkin County Schools	990328	West Yadkin Elementary	Piedmont-Triad	Y		Y
Yadkin County Schools	990336	Yadkinville Elementary	Piedmont-Triad	Y		Y

### 2023–24 Continually Low-Performing Charter Schools List

A continually low-performing charter school is identified as low-performing in any two of the last three years. The years used for this list are the 2021–22, 2022–23, and 2023–24 school years. A low-performing charter has a school performance grade of 'D' or 'F', and a growth status of 'Met' or 'Not Met'.

District Name	School Code	School Name	State Board Region	Low Performing 2023–24	Low Performing 2022–23	Low Performing 2021–22
Charter Schools	00A000	North Carolina Cyber Academy	Virtual	Y	Y	Y
Charter Schools	00B000	NC Virtual Academy	Virtual	Y		Y
Charter Schools	09B000	Emereau Bladen	Sandhills		Y	Y
Charter Schools	13B000	Valor Preparatory Academy	Southwest	Y	Y	Y
Charter Schools	13C000	A.C.E. Academy	Southwest	Y	Y	Y
Charter Schools	14B000	Oak Hill Charter School	Northwest	Y	Y	
Charter Schools	24N000	Classical Charter Schools of Whiteville	Sandhills	Y	Y	Y
Charter Schools	26C000	The Capitol Encore Academy	Sandhills	Y	Y	Y
Charter Schools	32C000	Community School of Digital & Visual Art	North Central		Y	Y
Charter Schools	32D000	Kestrel Heights School	North Central		Y	Y
Charter Schools	32H000	Research Triangle Charter	North Central	Y		Y
Charter Schools	32M000	Global Scholars Academy	North Central	Y	Y	Y
Charter Schools	32R000	Excelsior Classical Academy	North Central		Y	Y
Charter Schools	32S000	KIPP Durham College Preparatory	North Central	Y	Y	
Charter Schools	34D000	Carter G. Woodson School	Piedmont-Triad		Y	Y
Charter Schools	34F000	Forsyth Academy	Piedmont-Triad	Y	Y	
Charter Schools	36F000	Ridgeview Charter School	Southwest	Y	Y	Y
Charter Schools	41C000	Guilford Preparatory Academy	Piedmont-Triad	Y	Y	Y
Charter Schools	41H000	College Prep and Leadership Academy	Piedmont-Triad	Y	Y	
Charter Schools	41L000	Gate City Charter	Piedmont-Triad		Y	Y
Charter Schools	41M000	Next Generation Academy	Piedmont-Triad	Y	Y	Y
Charter Schools	41N000	The Experiential School of Greensboro	Piedmont-Triad	Y	Y	Y
Charter Schools	41R000	Summit Creek Academy	Piedmont-Triad		Y	Y
Charter Schools	42A000	KIPP Halifax College Preparatory	Northeast	Y	Y	Y
Charter Schools	43D000	Achievement Charter Academy	North Central	Y	Y	Y
Charter Schools	49B000	American Renaissance School	Southwest		Y	Y
Charter Schools	49D000	Success Institute Charter	Southwest	Y		Y
Charter Schools	53C000	Rising Leaders Academy	North Central	Y		Y
Charter Schools	54A000	Children's Village Academy	Southeast	Y	Y	Y
Charter Schools	60K000	Charlotte Secondary	Southwest	Y		Y
Charter Schools	60L000	KIPP Charlotte	Southwest		Y	Y
Charter Schools	60N000	American Leadership Academy Charlotte	Southwest	Y	Y	Y
Charter Schools	61J000	Lakeside Charter Academy	Southwest	Y	Y	Y
Charter Schools	61K000	United Community School	Southwest	Y	Y	Y
Charter Schools	61N000	TMSA Charlotte	Southwest		Y	Y
Charter Schools	61P000	VERITAS Community School, CFA	Southwest	Y	Y	Y
Charter Schools	61T000	Movement Charter School	Southwest		Y	Y
Charter Schools	61Y000	Steele Creek Preparatory Academy	Southwest	Y	Y	Y

District Name	School Code	School Name	State Board Region	Low Performing 2023–24	Low Performing 2022–23	Low Performing 2021–22
Charter Schools	62A000	Tillery Charter Academy	Sandhills	Y	Y	Y
Charter Schools	62J000	Southwest Charlotte STEM Academy	Southwest		Y	Y
Charter Schools	64A000	Rocky Mount Preparatory	North Central	Y	Y	Y
Charter Schools	65B000	Wilmington Preparatory Academy	Southeast	Y	Y	Y
Charter Schools	65C000	Classical Charter Schools of Wilmington	Southeast	Y	Y	Y
Charter Schools	65F000	American Leadership Academy-Coastal	Southeast	Y		Y
Charter Schools	65H000	Wilmington School of the Arts	Southeast		Y	Y
Charter Schools	67B000	Z.E.C.A. School of Arts and Technology	Southeast	Y	Y	Y
Charter Schools	69A000	Arapahoe Charter School	Southeast		Y	Y
Charter Schools	76A000	Uwharrie Charter Academy	Piedmont-Triad	Y	Y	Y
Charter Schools	79A000	Bethany Community School	Piedmont-Triad		Y	Y
Charter Schools	90D000	Monroe Charter Academy	Southwest	Y	Y	Y
Charter Schools	90F000	Apprentice Academy High School	Southwest	Y	Y	Y
Charter Schools	92M000	PreEminent Charter	North Central	Y	Y	
Charter Schools	92P000	Southern Wake Academy	North Central	Y		Y
Charter Schools	93A000	Haliwa-Saponi Tribal School	North Central	Y	Y	Y
Charter Schools	93J000	RISE Southeast Raleigh Charter School	North Central		Y	Y
Charter Schools	93T000	Cardinal Charter Acad at Wendell Falls	North Central		Y	Y
Charter Schools	94A000	Pocosin Innovative Charter	Northeast		Y	Y
Charter Schools	96C000	Dillard Academy	Southeast	Y	Y	
Charter Schools	96F000	Wayne Preparatory Academy	Southeast	Y	Y	Y